

The Agenda

REGULAR MEETING  
MISSOULA RURAL FIRE DISTRICT

BOARD OF TRUSTEES

DATE: Tuesday, November 12, 2024  
TIME: 4:00 P.M.  
PLACE: Station #1, 2521 South Avenue West, Missoula

CALL TO ORDER

PLEDGE OF ALLEGIANCE

ROLL CALL

READING OF MINUTES

PUBLIC COMMENT

CLAIMS

|                  |                     |
|------------------|---------------------|
| September Claims | \$ 18,203.56        |
| October Claims   | <u>\$299,925.83</u> |
| Total Claims     | \$318,129.39        |

COMMUNICATIONS

TRUSTEE REPORTS

STAFF REPORTS

OLD BUSINESS

NEW BUSINESS

1. Missoula Rural Fire District (MRFD) New Career Firefighter Oath of Office: Christopher Crowell, Daniela Hicks, and Allen Sager
2. Discussion and Decision on Annexation of 6652 Handy Lane, Missoula, MT 59802
3. Discussion and Decision on Annexation of 11398 Highway 200 E., Bonner, MT 59823
4. Discussion and Decision on Resolution # 2024-9 Donation Surplus Equipment
5. Discussion and Decision on moving the November 11, 2025 BOT Meeting from 11/11/25 to either 11/10/25 or 11/12/25

ADJOURNMENT

Missoula Rural Fire District  
Board of Trustees  
Missoula, Montana 59804

October 8<sup>th</sup>, 2024

The Missoula Rural Fire District (MRFD) Board of Trustees (BOT) met in regular session at the Station 1 Headquarters meeting room and via a "Zoom" video conference on **Tuesday, October 8<sup>th</sup>, 2024.**

**CALL TO ORDER:** Chairman Murphy called the meeting to order at 16:00 hours.

#### **PLEDGE OF ALLEGIANCE**

**ROLL CALL:** Present: Chairman Ben Murphy, Secretary Dick Mangan and Trustee Dan Corti. Absent: Vice-Chairman Larry Hanson and Trustee Jeff Merritt.

**READING OF THE MINUTES:** Secretary Mangan moved to accept the minutes as written. Trustee Corti seconded the motion. The motion was voted on and passed with 3 ayes, 0 nays and 0 abstains.

**PUBLIC COMMENT:** There were no comments from the public.

**CLAIMS:** Trustee Corti moved to accept the claims as submitted. Secretary Mangan seconded the motion. The motion was voted on and passed with 3 ayes, 0 nays, and 0 abstains.

**COMMUNICATIONS:** Raquel Wilkinson conveyed that the communications consisted of a thank you card from a member of the public, a letter from Clearwater Properties regarding a donation they made to MRFD, a letter and thank you cards from Valley Christian School, a DFM Report, an IT Report, a Public Relations Outreach Breakdown and a Calls for Service Report.

**TRUSTEE REPORTS:** In Trustee Merritt's absence, Chairman Murphy read Trustee Merritt's report. The report stated that Engineer Jeff Noble was honored with an Appreciation Award for his work on the pediatric dosing charts. Lieutenant Hollenbeck was also given an Appreciation Award for his work on Station Alerting. Their dedication and work reflect the high caliber of MRFD's firefighters.

#### **STAFF REPORTS:**

**Local 2457:** Engineer Harris reported that Battalion Chief Orr attended the Fallen Firefighter Memorial last month as a representative of the State Firefighter's Association. He was there to honor Captain Dave Lambers of Local 3261 of Great Falls, who passed away last year due to occupational cancer. Also, there is an upcoming Muscular Dystrophy Association Fill the Boot fundraiser during the Montana Grizzlies' homecoming game.

**Finance and Human Resources (HR):** Melissa Schnee attended several meetings, including the Montana Fire Trustee's Association Meeting with Chief Finlay and Assistant Chief Paulsen, County Commissioners Board Meetings with Chief Finlay, Assistant Chief Paulsen, and Deputy Chief Horsens, Missoula Consolidated Planning Board Meeting with Chief Finlay, and the Missoula Development Authority Board Meeting with Chief Finlay. She also attended a meeting with the Community and Economic Development Department, Flanna McCarty, and Andrew Hagemeier with Chief Finlay to discuss Tax Increment Funding (TIF) and Targeted Economic Development Districts (TEDD). Melissa participated in the Captain's Assessment and is scheduled to participate in the upcoming Lieutenant's Assessment on October 22<sup>nd</sup> and 23<sup>rd</sup>. Human Resources interviews are scheduled for October 30<sup>th</sup>. Updates have been made to the Candidates Physical Agility Test (CPAT) website. CPAT will be running on January 31<sup>st</sup> and February 1<sup>st</sup>, with orientation and set up on January 31<sup>st</sup>. Fire billing is up to date, but a few engines are still out.

**Deputy Chief:** Deputy Chief Horsens and Deputy Fire Marshal Giardino met with the business owner on Professional Drive regarding installing a cistern for firefighting purposes and confirmed that it would be installed soon. Training regarding engine companies on the new business inspection software program is scheduled for October. The IT department is waiting for vendor availability to schedule a meeting with East Missoula Rural Fire Department (EMRFD), Frenchtown Rural Fire District, and Missoula Emergency Services Incorporated to discuss a regional Image Trend site. As discussed last month, having a regional site may help MRFD save costs and enhance the features available to partner agencies. As for Emergency services, Local 2457 has reviewed and accepted the Emergency Services Coordinator Memorandum of Understanding (MOU). Once the BOT adopts the MOU, the job will be posted. Deputy Chief Horsens attended the Rocky Mountain Rural Trauma Symposium last month, which was very informative. MRFD's attorney, Kate Dinwiddie, is reviewing a paramedic school contract. This contract would allow MRFD to recover the expenses incurred from sending employees to paramedic school if they do not complete the program or leave their employment within three years after obtaining their paramedic certification if it was paid for by MRFD. A work group will be established to outfit the new ambulance, expected to arrive in the spring of 2025. Regarding the Station Location Study update, the draft was reviewed and submitted to Emergency Services Consulting International. Even though the report was still in draft form, it was evident that 4 of the 5 stations required renovation or replacement. At Secretary Mangan's request during the last BOT meeting, BC Orr drafted a press release and sent it to the media. Several members of the media contacted MRFD for more information and interviews. The removal of the Accreditation Manager position from the bargaining unit MOU was reviewed and approved by Local 2457. Upon the BOT's approval, the position will be reposted internally and externally. Document review is underway for the peer team, which Deputy Chief Horsens had recently been assigned to. If the documentation is credible, a site visit will be scheduled in Oklahoma between Thanksgiving and Christmas. The Montana Emergency Tourism Assistant Program Grant application has been completed and submitted. If approved, the grant funds will be used to purchase two powered watercrafts to enhance water rescue capabilities. The Missoula County Office of Grants and Community Programs reviewed the documents before submission and provided valuable feedback. The deadline for the application for the Assistant to Firefighters Grant (AFG) is in October. Deputy Chief Horsens is currently providing preliminary information to the grant writer and will seek AFG funds for a cot, loading system, stair chair, an automatic CPR device, and a cardiac monitor for the new ambulance. Deputy Chief Horsens also reported that he was part of the Captain's Assessment, had attended the Montana Arbitration and Labor Relations Conference in Butte, sat in morning meetings with each shift for questions and answers, met with Missoula Fire Department (MFD) administration for their monthly meeting, and participated in the "Battle of the Badges" softball game. Unfortunately, MRFD lost their game, and the City Police Department will hold the trophy until next year.

**Assistant Chief of Operations:** Assistant Chief Paulsen reported that he was part of the Captain's Assessment. Andy Brown was the successful candidate and will be starting that position on November 10th, when the new lieutenant will start, and the new shift station rotation will take place. The Lieutenant Assessment is scheduled for October 22nd and 23rd. MRFD is experiencing many iPhone crash notifications where a phone falls on the road without being an actual incident. As a result, these notifications will now be treated like fire alarms, prompting the first engine to respond code 3 until more information becomes available. The response will then be upgraded or canceled accordingly. MRFD's reserve Engine 322 is currently out of service due to a cracked tank, but it will be covered by warranty and should be back in operation by October 26th. MRFD has two members in Georgia, with the Incident Management Team working with the local agencies there on the hurricane cleanup and possibly transitioning to Florida to help with the cleanup after the approaching hurricane. MRFD is forming a committee for Automatic Vehicle Location, which will soon come into effect. The committee's purpose is to identify and address any potential issues before the system is implemented. Both MRFD and MFD will have separate working groups initially, but they will eventually collaborate to solve any problems that arise. Assistant Chief Paulsen attended the Montana State Trustee's Conference in Great Falls, which was very informative. Assistant Chief Paulsen, Chief Finlay, Deputy Chief Horsens, Melissa Schnee, Max Kottwitz, and Kate Dinwiddie are continuing to identify the challenges with the Fire Authority Bill that may be coming up. They are working together to formulate a game plan for moving forward. Finally, FEMA declared the storm on July 24th a disaster. They

plan to reimburse MRFD for some of the costs associated with certain types of calls, such as incidents caused by trees and power lines falling down.

**Fire Chief:** Chief Finlay reported that significant efforts have been focused on the TEDDs and TIFs within MRFD, including the proposed TIF/TEDD area of Grant Creek Crossing and the financial impact on MRFD. Chief Finlay and Melissa Schnee met several times with various organizations to explain their concerns about the effects of TEDDs on MRFD in numerous ways. Chief Finlay and Melissa will attend the upcoming County Commissioner's Meeting for the public comment period regarding the proposed Grant Creek Crossing TEDD. They have also met with the school districts, which have been affected, though not as much as MRFD, but nonetheless negatively impacted. Chief Finlay reported that an ambulance would be arriving soon. As part of the development process, the quarterly apparatus meeting was held to identify the ambulance requirements. Chief Finlay and Captain Burgess met with LifePoint Health at Community Medical Center to discuss their proposed plan for the Healthy Firefighters program. Chief Finlay participated in the recent Labor Management Meeting, during which they discussed the MOUs that were on the new business agenda. Chief Finlay also attended the Montana Fire Trustee's Association Meeting. Chief Finlay reported that EMRFD had not requested MRFD's assistance to cover their area since September 1st. MRFD has responded to calls as part of the auto-aid/mutual aid agreements, but EMRFD has been covering its own needs. There have been many productive conversations between MRFD and EMRFD, and their assistant chief, JD Sessions, was one of the panel members for MRFD's recent Captain's Assessment. Chief Finlay mentioned that MRFD had issued a press release at Secretary Mangan's request about the facilities and the quality of 4 out of the 5 stations. He also said that the press release had gained attention, and he had conducted his fourth interview of the day. Additionally, someone from the Missoulian newspaper attended the BOT meeting.

**OLD BUSINESS:**

**NEW BUSINESS:**

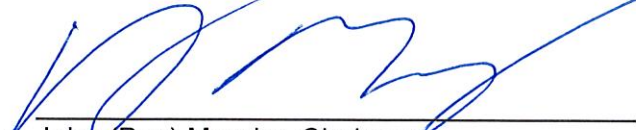
1. **Discussion and Decision on MOU Between Local 2457 and Fire District to Add Emergency Medical Services (EMS) Coordinator Position to the Collective Bargaining Unit:** Chief Finlay stated that this MOU was presented at the Labor Management Meeting after presenting it to legal counsel. MRFD's objective for the EMS Coordinator role was to avoid relying on on-duty staff to fulfill the needs of an EMS Coordinator, as it would interfere with their responsibilities as emergency responders. The EMS Coordinator's primary responsibility would be EMS coordination work with a secondary focus on emergency response as required. Trustee Corti moved to accept the MOU. There was no public comment. Secretary Mangan seconded the motion. The motion was voted on and passed with 3 ayes, 0 nays and 0 abstains.
2. **Discussion and Decision on MOU Between Local 2457 and Fire District to Remove Accreditation Manager Position from Collective Bargaining Unit:** Chief Finlay mentioned that the administration recognizes the value of accreditation and intends to continue with the project. Initially, it was supposed to be part of the bargaining unit, but they could not fill the position. Local 2457 recommended that the position be removed from the bargaining unit and removed from the contract. The Accreditation Manager's primary responsibility would be accreditation work with a secondary focus on emergency response as required. Secretary Mangan moved to accept the MOU. Trustee Corti seconded the motion. The motion was voted on and passed with 3 ayes, 0 nays and 0 abstains.

**ADJOURNMENT:** Trustee Corti made a motion to adjourn. Secretary Mangan seconded the motion. The motion was voted on and passed with 3 ayes, 0 nays and 0 abstains. Chairman Murphy adjourned the meeting at 16:29 hours.

Respectfully submitted,



Jenn Culp, Administrative Assistant  
Missoula Rural Fire District



---

John (Ben) Murphy, Chairman

11/12/24 JBM  
~~12/11/24~~  
Date



---

Dick Mangan, Secretary

11/14/24  
Date

11/07/24  
11:21:21

MISSOULA RURAL FIRE DISTRICT  
Claim Details  
For the Accounting Period: 9/24

Page: 1 of 5  
Report ID: APi00V

For dates posted from 10/09/24 to 11/07/24  
\* ... Over spent expenditure

| Claim/<br>Line # | Check<br>Invoice #/Inv | Vendor #/Name/<br>Date/Description  | Document \$/<br>Line \$ | Disc \$ | PO # | Fund Org Acct  | Object | Proj | Cash<br>Account |
|------------------|------------------------|-------------------------------------|-------------------------|---------|------|----------------|--------|------|-----------------|
| 45704            | 82669S                 | 1788 AMAZON CAPITAL SERVICES        | 192.98                  |         |      |                |        |      |                 |
| 1                | 090224WRRM             | 09/02/24 STA 2                      | 15.98                   |         |      | 1000 50 420460 | 362    |      | 101000          |
| 2                | 09032497WF             | 09/03/24 327                        | 35.45                   |         |      | 1000 20 420440 | 272    |      | 101000          |
| 3                | 0925241W7D             | 09/25/24 RADIOS                     | 65.98                   |         |      | 1000 50 420460 | 271    |      | 101000          |
| 4                | 0926246VXF             | 09/26/24 325                        | 75.57                   |         |      | 1000 20 420440 | 272    |      | 101000          |
|                  |                        | <b>Total for Vendor:</b>            | <b>192.98</b>           |         |      |                |        |      |                 |
| 45739            | 82705S                 | 1917 AVI GOODIN                     | 1.00                    |         |      |                |        |      |                 |
| 1                | 090924AG01             | 09/09/24 GOODIN MT WL PER DIEM      | 1.00                    |         |      | 1000 50 420460 | 379    |      | 101000          |
|                  |                        | <b>Total for Vendor:</b>            | <b>1.00</b>             |         |      |                |        |      |                 |
| 45726            | 82683S                 | 1264 BILL'S 24 HR PLUMBING, LLC     | 665.00                  |         |      |                |        |      |                 |
| 1                | 1927245                | 09/30/24 STA 5                      | 665.00                  |         |      | 1000 50 420460 | 365    |      | 101000          |
|                  |                        | <b>Total for Vendor:</b>            | <b>665.00</b>           |         |      |                |        |      |                 |
| 45694            | 82664S                 | 1299 CITY OF MISSOULA-FINANCE       | 52.57                   |         |      |                |        |      |                 |
| 1                | 0924247965             | 09/24/24 STA 6                      | 22.19                   |         |      | 1000 10 420510 | 341    |      | 101000          |
| 2                | 0926244500             | 09/26/24 STA 2                      | 30.38                   |         |      | 1000 10 420510 | 341    |      | 101000          |
|                  |                        | <b>Total for Vendor:</b>            | <b>52.57</b>            |         |      |                |        |      |                 |
| 45691            | 82665S                 | 216 CLEARWATER CREDIT UNION         | 2,682.35                |         |      |                |        |      |                 |
| 1                | 0922244600             | 09/22/24 AITCHISON CAR SEAT         | 95.00                   |         |      | 1000 50 420460 | 380    |      | 101000          |
| 2                | 0922244600             | 09/22/24 BUNNELL CAR SEAT           | 95.00                   |         |      | 1000 50 420460 | 380    |      | 101000          |
| 3                | 0922244600             | 09/22/24 ZOOM                       | 16.59                   |         |      | 1000 10 420510 | 368    |      | 101000          |
| 4                | 0922244600             | 09/22/24 NEW HIRE DRIVING RECORDS   | 15.74                   |         |      | 1000 10 420510 | 356    |      | 101000          |
| 5                | 0922244600             | 09/22/24 FULBRIGHT BLUE CARD        | 385.00                  |         |      | 1000 50 420460 | 380    |      | 101000          |
| 6                | 0922244600             | 09/22/24 DREGALLA CAR SEAT          | 95.00                   |         |      | 1000 50 420460 | 380    |      | 101000          |
| 7                | 0922244600             | 09/22/24 CHRISTIANSEN CAR SEAT      | 95.00                   |         |      | 1000 60 420462 | 380    |      | 101000          |
| 8                | 0922244600             | 09/22/24 NEW HIRE DRIVING RECORD    | 23.61                   |         |      | 1000 60 420462 | 391    |      | 101000          |
| 9                | 0922244600             | 09/22/24 LEGAL NOTICE PUBLIC HEARIN | 41.40                   |         |      | 1000 10 420510 | 337    |      | 101000          |
| 10               | 0922244600             | 09/22/24 FEES                       | 6.14                    |         |      | 1000 10 420510 | 356    |      | 101000          |
| 11               | 0922244600             | 09/22/24 301 CAR WASH               | 26.99                   |         |      | 1000 20 420440 | 372    |      | 101000          |
| 12               | 0922244600             | 09/22/24 302 CAR WASH               | 26.99                   |         |      | 1000 20 420440 | 372    |      | 101000          |
| 13               | 0922244600             | 09/22/24 303 CAR WASH               | 26.99                   |         |      | 1000 20 420440 | 372    |      | 101000          |
| 14               | 0922244600             | 09/22/24 EXTERNAL USB 1TB           | 72.49                   |         |      | 1000 10 420510 | 268    |      | 101000          |
| 15               | 0922244600             | 09/22/24 BUTLER CS INSTR RECERT     | 60.00                   |         |      | 1000 50 420460 | 380    |      | 101000          |

11/07/24  
11:21:21

MISSOULA RURAL FIRE DISTRICT  
Claim Details  
For the Accounting Period: 9/24

Page: 2 of 5  
Report ID: AP100V

For dates posted from 10/09/24 to 11/07/24  
\* ... Over spent expenditure

| Claim/<br>Line # | Check<br>Invoice # | Vendor #/Name/<br>Inv Date/Description | Document \$/<br>Line \$ | Disc \$ | PO # | Fund Org Acct  | Object | Proj | Cash<br>Account |
|------------------|--------------------|--|-------------------------|---------|------|----------------|--------|------|-----------------|
| 16               | 0922244600         | 09/22/24 ADVERTISING HR                | 439.35*                 |         |      | 1000 10 420510 | 391    |      | 101000          |
| 17               | 0922244600         | 09/22/24 IPAD MOUNT                    | 690.58                  |         |      | 1000 10 420510 | 268    |      | 101000          |
| 18               | 0922244600         | 09/22/24 J NOBLE BLUE CARD             | 385.00                  |         |      | 1000 50 420460 | 380    |      | 101000          |
| 19               | 0922244600         | 09/22/24 EXTERNAL USB 1TB              | 72.49                   |         |      | 1000 10 420510 | 268    |      | 101000          |
| 20               | 0922244600         | 09/22/24 ADOBE                         | 12.99                   |         |      | 1000 10 420510 | 368    |      | 101000          |
|                  |                    | <b>Total for Vendor:</b>               | <b>2,682.35</b>         |         |      |                |        |      |                 |
| 45693            | 82666S             | 1740 CODY MAXON                        | 81.00                   |         |      |                |        |      |                 |
| 1                | 091024CM01         | 09/10/24 MAXON MT WL PER DIEM          | 81.00                   |         |      | 1000 50 420460 | 379    |      | 101000          |
|                  |                    | <b>Total for Vendor:</b>               | <b>81.00</b>            |         |      |                |        |      |                 |
| 45690            | -99570C            | 1865 GECKO DESIGNS, LLC                | 100.00                  |         |      |                |        |      |                 |
| 1                | 13856              | 09/30/24 WEBSITE DEVELOPMENT           | 100.00                  |         |      | 1000 10 420510 | 368    |      | 101000          |
|                  |                    | <b>Total for Vendor:</b>               | <b>100.00</b>           |         |      |                |        |      |                 |
| 45695            | -99569C            | 420 KELLEY CREATE CO                   | 165.00                  |         |      |                |        |      |                 |
| 1                | 37560940           | 09/30/24 COPIER MAINT                  | 165.00                  |         |      | 1000 10 420510 | 356    |      | 101000          |
|                  |                    | <b>Total for Vendor:</b>               | <b>165.00</b>           |         |      |                |        |      |                 |
| 45722            | -99567C            | 148 LITHIA MOTORS                      | 16.42                   |         |      |                |        |      |                 |
| 1                | 173188             | 09/19/24 335                           | 16.42                   |         |      | 1000 20 420440 | 272    |      | 101000          |
|                  |                    | <b>Total for Vendor:</b>               | <b>16.42</b>            |         |      |                |        |      |                 |
| 45724            | 82684S             | 210 MISSOULA COUNTY OEM                | 7,661.00                |         |      |                |        |      |                 |
| 1                | MRFD-FY25          | 08/30/24 NEW WORLD                     | 7,661.00                |         |      | 1000 10 420510 | 368    |      | 101000          |
|                  |                    | <b>Total for Vendor:</b>               | <b>7,661.00</b>         |         |      |                |        |      |                 |
| 45723            | 82685S             | 1924 MISSOULA NISSAN & HYUNDAI         | 99.22                   |         |      |                |        |      |                 |
| 1                | 6039069/1          | 09/17/24 DFM I                         | 99.22                   |         |      | 1000 20 420440 | 372    |      | 101000          |
|                  |                    | <b>Total for Vendor:</b>               | <b>99.22</b>            |         |      |                |        |      |                 |
| 45705            | 82671S             | 1904 MONTANA BROOM AND BRUSH SUPPLY    | 1,158.50                |         |      |                |        |      |                 |
| 1                | 1450377-1          | 09/03/24 STA 1                         | 19.94                   |         |      | 1000 50 420460 | 361    |      | 101000          |
| 2                | 1450408-1          | 09/03/24 STA 5                         | 9.97                    |         |      | 1000 50 420460 | 365    |      | 101000          |
| 3                | 1452297-0          | 09/05/24 STA 4                         | 95.77                   |         |      | 1000 50 420460 | 364    |      | 101000          |
| 4                | 1454696-0          | 09/11/24 STA 1                         | 87.25                   |         |      | 1000 50 420460 | 361    |      | 101000          |
| 5                | C1454696           | 09/11/24 STA 1                         | -50.00                  |         |      | 1000 50 420460 | 361    |      | 101000          |

11/07/24  
11:21:21

MISSOULA RURAL FIRE DISTRICT  
Claim Details  
For the Accounting Period: 9/24

Page: 3 of 5  
Report ID: APi00V

For dates posted from 10/09/24 to 11/07/24  
\* ... Over spent expenditure

| Claim/<br>Line # | Check<br>Invoice #/Inv Date/Description    | Vendor #/Name/<br>Invoice #/Inv Date/Description | Document \$/<br>Line \$ | Disc \$ | PO # | Fund Org Acct  | Object | Proj | Cash<br>Account |
|------------------|--|--|-------------------------|---------|------|----------------|--------|------|-----------------|
| 6                | 1456000-0 09/13/24 STA 2                   |  | 76.44                   |         |      | 1000 50 420460 | 362    |      | 101000          |
| 7                | 1456000-1 09/16/24 STA 2                   |  | 50.22                   |         |      | 1000 50 420460 | 362    |      | 101000          |
| 8                | 1456001-0 09/13/24 STA 6                   |  | 80.34                   |         |      | 1000 50 420460 | 366    |      | 101000          |
| 9                | 1456001-1 09/16/24 STA 6                   |  | 70.08                   |         |      | 1000 50 420460 | 366    |      | 101000          |
| 10               | 1456003-0 09/13/24 STA 5                   |  | 202.13                  |         |      | 1000 50 420460 | 365    |      | 101000          |
| 11               | 1456003-1 09/16/24 STA 5                   |  | 70.08                   |         |      | 1000 50 420460 | 365    |      | 101000          |
| 12               | 1456013-0 09/13/24 SCBA                    |  | 47.84                   |         |      | 1000 50 420460 | 204    |      | 101000          |
| 13               | 1458909-0 09/20/24 STA 6                   |  | 97.64                   |         |      | 1000 50 420460 | 366    |      | 101000          |
| 14               | 1458908-1 09/23/24 STA 6                   |  | 9.91                    |         |      | 1000 50 420460 | 366    |      | 101000          |
| 15               | 1458910-0 09/23/24 STA 2                   |  | 70.08                   |         |      | 1000 50 420460 | 362    |      | 101000          |
| 16               | 1458919-0 09/24/24 STA 1                   |  | 70.08                   |         |      | 1000 50 420460 | 361    |      | 101000          |
| 17               | 1458929-0 09/21/24 STA 4                   |  | 50.22                   |         |      | 1000 50 420460 | 364    |      | 101000          |
| 18               | 1458929-1 09/24/24 STA 4                   |  | 30.43                   |         |      | 1000 50 420460 | 364    |      | 101000          |
| 19               | 1458929-2 09/24/24 STA 4                   |  | 70.08                   |         |      | 1000 50 420460 | 364    |      | 101000          |
|                  |  | <b>Total for Vendor:</b>                         | <b>1,158.50</b>         |         |      |                |        |      |                 |
| 45738            | 82706S 1701 PHILLIP MEDIATE                |  | 1.00                    |         |      |                |        |      |                 |
| 1                | 090924PM01 09/09/24 MEDIATE MT WL PER DIEM |  | 1.00                    |         |      | 1000 50 420460 | 379    |      | 101000          |
|                  |  | <b>Total for Vendor:</b>                         | <b>1.00</b>             |         |      |                |        |      |                 |
| 45727            | -99566C 705 SEA WESTERN FIRE APPARATUS &   |  | 5,228.14                |         |      |                |        |      |                 |
| 1                | INV34003 07/12/24 SHOP                     |  | 31.47                   |         |      | 1000 20 420440 | 270    |      | 101000          |
| 2                | INV34218 07/19/24 SHOP                     |  | 234.78                  |         |      | 1000 20 420440 | 270    |      | 101000          |
| 4                | INV34218 07/19/24 LUBRICANT                |  | 623.80                  |         |      | 1000 20 420440 | 232    |      | 101000          |
| 5                | INV35705 09/18/24 TURNOUTS                 |  | 3,137.51                |         |      | 1000 50 420460 | 224    |      | 101000          |
| 6                | INV35719 09/19/24 NEW HIRE PPE             |  | 344.58                  |         |      | 1000 50 420460 | 224    |      | 101000          |
| 7                | INV35920 09/24/24 NEW HIRE TURNOUTS        |  | 545.55                  |         |      | 1000 50 420460 | 224    |      | 101000          |
| 8                | INV36067 09/26/24 NEW HIRE TURNOUTS        |  | 310.45                  |         |      | 1000 50 420460 | 224    |      | 101000          |
|                  |  | <b>Total for Vendor:</b>                         | <b>5,228.14</b>         |         |      |                |        |      |                 |
| 45728            | 82707S 360 SHIPPING DEPOT                  |  | 15.38                   |         |      |                |        |      |                 |
| 1                | 80082577 09/13/24 POSTAGE                  |  | 15.38                   |         |      | 1000 10 420510 | 311    |      | 101000          |
|                  |  | <b>Total for Vendor:</b>                         | <b>15.38</b>            |         |      |                |        |      |                 |

11/07/24  
11:21:21

MISSOULA RURAL FIRE DISTRICT  
Claim Details  
For the Accounting Period: 9/24

Page: 4 of 5  
Report ID: AP100V

For dates posted from 10/09/24 to 11/07/24  
\* ... Over spent expenditure

| Claim/<br>Line # | Check<br>Invoice #/Inv Date/Description | Vendor #/Name/<br>Invoice #/Inv Date/Description | Document \$/<br>Line \$ | Disc \$       | PO #             | Fund Org Acct       | Object    | Proj | Cash<br>Account |
|------------------|---|--|-------------------------|---------------|------------------|---------------------|-----------|------|-----------------|
| 45709            | -99568C                                 | 1284 TRACE ANALYTICS, INC.                       | 3.00                    |               |                  |                     |           |      |                 |
| 1                | 24-19149                                | 09/06/24 ROUTINE ANALYSIS SHORT PAID             | 3.00                    |               |                  | 1000 20 420440      | 370       |      | 101000          |
|                  |   | <b>Total for Vendor:</b>                         | <b>3.00</b>             |               |                  |                     |           |      |                 |
| 45692            | 82667S                                  | 1759 TYLER LOTERBAUER                            | 81.00                   |               |                  |                     |           |      |                 |
| 1                | 091024ILO1                              | 09/10/24 LOTERBAUER MT WL PER DIEM               | 81.00                   |               |                  | 1000 50 420460      | 379       |      | 101000          |
|                  |   | <b>Total for Vendor:</b>                         | <b>81.00</b>            |               |                  |                     |           |      |                 |
|                  |   | <b># of Claims</b>                               | <b>17</b>               | <b>Total:</b> | <b>18,203.56</b> | <b># of Vendors</b> | <b>12</b> |      |                 |
|                  |   | <b>Total Electronic Claims</b>                   |                         |               | <b>5,512.56</b>  |                     |           |      |                 |
|                  |   | <b>Total Non-Electronic Claims</b>               |                         |               | <b>12691.00</b>  |                     |           |      |                 |

11/07/24  
11:21:21

MISSOULA RURAL FIRE DISTRICT  
Fund Summary for Claims  
For the Accounting Period: 9/24

Page: 5 of 5  
Report ID: AP110

---

| Fund/Account                             | Amount           |
|--|------------------|
| 1000 GENERAL FUND                        |                  |
| 10100 CASH ON DEPOSIT - COUNTY TREASURER | 18,203.56        |
| <b>Total:</b>                            | <b>18,203.56</b> |

---

11/08/24  
15:06:16

MISSOULA RURAL FIRE DISTRICT  
Claim Details  
For the Accounting Period: 10/24

Page: 1 of 16  
Report ID: AP100V

\* ... Over spent expenditure

| Claim/<br>Line # | Check<br>Invoice #/Inv Date/Description | Vendor #/Name/<br>Date/Description | Document \$/<br>Line \$ | Disc \$ | PO # | Fund Org Acct  | Object | Proj | Cash<br>Account |
|------------------|---|------------------------------------|-------------------------|---------|------|----------------|--------|------|-----------------|
| 45798            | 82725S                                  | 1661 ALEC BRAY                     | 27.50                   |         |      |                |        |      |                 |
| 1                | 103124AB01                              | 10/31/24 BRAY OCT GYM REIMB        | 27.50                   |         |      | 1000 50 420460 | 132    |      | 101000          |
|                  |   | <b>Total for Vendor:</b>           | <b>27.50</b>            |         |      |                |        |      |                 |
| 45753            | 82708S                                  | 7 ALL AMERICAN TROPHY              | 14.00                   |         |      |                |        |      |                 |
| 1                | 91218                                   | 10/15/24 ID TAGS                   | 14.00                   |         |      | 1000 50 420460 | 224    |      | 101000          |
|                  |   | <b>Total for Vendor:</b>           | <b>14.00</b>            |         |      |                |        |      |                 |
| 45802            | 82735S                                  | 32 BIG BEAR SIGN COMPANY           | 83.00                   |         |      |                |        |      |                 |
| 1                | 2024-1634                               | 10/23/24 309                       | 10.00                   |         |      | 1000 20 420440 | 270    |      | 101000          |
| 2                | 2024-1634                               | 10/23/24 322                       | 10.00                   |         |      | 1000 20 420440 | 270    |      | 101000          |
| 3                | 2024-1665                               | 10/29/24 TURNOUTS                  | 63.00                   |         |      | 1000 50 420460 | 369    |      | 101000          |
|                  |   | <b>Total for Vendor:</b>           | <b>83.00</b>            |         |      |                |        |      |                 |
| 45775            | -99559C                                 | 33 BIG SKY FIRE EQUIPMENT          | 26.00                   |         |      |                |        |      |                 |
| 1                | 0504721                                 | 10/14/24 STA 4                     | 26.00                   |         |      | 1000 50 420460 | 364    |      | 101000          |
|                  |   | <b>Total for Vendor:</b>           | <b>26.00</b>            |         |      |                |        |      |                 |
| 45717            | 82672S                                  | 819 BLACKFOOT COMMUNICATIONS       | 358.70                  |         |      |                |        |      |                 |
| 1                | 1001246467                              | 10/01/24 STA 2                     | 358.70                  |         |      | 1000 10 420510 | 345    |      | 101000          |
|                  |   | <b>Total for Vendor:</b>           | <b>358.70</b>           |         |      |                |        |      |                 |
| 45767            | 82726S                                  | 1480 BRIAN LAFOREST                | 15.00                   |         |      |                |        |      |                 |
| 1                | 103124BL01                              | 10/31/24 LAFOREST OCT GYM REIMB    | 15.00                   |         |      | 1000 20 420440 | 132    |      | 101000          |
|                  |   | <b>Total for Vendor:</b>           | <b>15.00</b>            |         |      |                |        |      |                 |
| 45730            | 82686S                                  | 1925 CAMERON WARREN                | 20.00                   |         |      |                |        |      |                 |
| 1                | 101424CW01                              | 10/14/24 RFF WATSON FINGERPRINTING | 20.00                   |         |      | 1000 60 420462 | 391    |      | 101000          |
|                  |   | <b>Total for Vendor:</b>           | <b>20.00</b>            |         |      |                |        |      |                 |
| 45716            | 82673S                                  | 1424 CHARTER                       | 661.70                  |         |      |                |        |      |                 |
| 1                | 1401100124                              | 10/01/24 STA 1                     | 449.00                  |         |      | 1000 10 420510 | 345    |      | 101000          |
| 2                | 8801100124                              | 10/01/24 STA 5                     | 212.70                  |         |      | 1000 10 420510 | 345    |      | 101000          |

11/08/24  
15:06:16

MISSOULA RURAL FIRE DISTRICT  
Claim Details  
For the Accounting Period: 10/24

Page: 2 of 16  
Report ID: AP100V

\* ... Over spent expenditure

| Claim/<br>Line #         | Check<br>Invoice #/Inv Date | Vendor #/Name/<br>Date/Description  | Document \$/<br>Line \$ | Disc \$ | PO # | Fund Org Acct  | Object | Proj | Cash<br>Account |
|--------------------------|-----------------------------|-------------------------------------|-------------------------|---------|------|----------------|--------|------|-----------------|
| 45741                    | 82687S                      | 1424 CHARTER                        | 241.90                  |         |      |                |        |      |                 |
| 1                        | 1011246052                  | 10/11/24 STA 1                      | 14.28                   |         |      | 1000 10 420510 | 345    |      | 101000          |
| 2                        | 1014241424                  | 10/14/24 STA 6                      | 227.62                  |         |      | 1000 10 420510 | 345    |      | 101000          |
| 45748                    | 82696S                      | 1424 CHARTER                        | 322.63                  |         |      |                |        |      |                 |
| 1                        | 1719102024                  | 10/20/24 STA 4                      | 322.63                  |         |      | 1000 10 420510 | 345    |      | 101000          |
| <b>Total for Vendor:</b> |                             |                                     | <b>1,226.23</b>         |         |      |                |        |      |                 |
| 45744                    | 82697S                      | 1583 CIII CARDS                     | 5,462.30                |         |      |                |        |      |                 |
| 2                        | 1018249808                  | 10/18/24 CA WL LODGING              | -93.46                  |         |      | 1000 50 420460 | 379    |      | 101000          |
| 3                        | 1018249808                  | 10/18/24 HR ADVERTISING             | 123.42*                 |         |      | 1000 10 420510 | 391    |      | 101000          |
| 4                        | 1018249808                  | 10/18/24 CA WL FUEL                 | 40.08                   |         |      | 1000 20 420440 | 231    |      | 101000          |
| 5                        | 1018249808                  | 10/18/24 CA WL FUEL                 | 36.62                   |         |      | 1000 20 420440 | 231    |      | 101000          |
| 6                        | 1018249808                  | 10/18/24 CA WL FUEL                 | 48.06                   |         |      | 1000 20 420440 | 231    |      | 101000          |
| 7                        | 1018249808                  | 10/18/24 CA WL FUEL                 | 41.94                   |         |      | 1000 20 420440 | 231    |      | 101000          |
| 8                        | 1018249808                  | 10/18/24 CA WL FUEL                 | 50.01                   |         |      | 1000 20 420440 | 231    |      | 101000          |
| 9                        | 1018249808                  | 10/18/24 CA WL FUEL                 | 45.78                   |         |      | 1000 20 420440 | 231    |      | 101000          |
| 10                       | 1018249808                  | 10/18/24 CA WL FUEL                 | 39.63                   |         |      | 1000 20 420440 | 231    |      | 101000          |
| 11                       | 1018249808                  | 10/18/24 SCHNEE TRUSTEE CONF LODGIN | 215.68                  |         |      | 1000 10 420510 | 379    |      | 101000          |
| 12                       | 1018249808                  | 10/18/24 FINLAY TRUSTEE CONF LODGIN | 215.68                  |         |      | 1000 10 420510 | 379    |      | 101000          |
| 13                       | 1018249808                  | 10/18/24 PAULSEN TRUSTEE CONF LODGI | 215.68                  |         |      | 1000 10 420510 | 379    |      | 101000          |
| 14                       | 1018249808                  | 10/18/24 MFD/MREFD MEETING          | 126.90                  |         |      | 1000 10 420510 | 379    |      | 101000          |
| 15                       | 1018249808                  | 10/18/24 LUBKE NFA MEAL TICKET      | 305.13                  |         |      | 1000 50 420460 | 379    |      | 101000          |
| 16                       | 1018249808                  | 10/18/24 TRAINING SUPPLIES          | 65.14                   |         |      | 1000 30 420430 | 220    |      | 101000          |
| 17                       | 1018249808                  | 10/18/24 SHOP                       | 107.81                  |         |      | 1000 20 420440 | 270    |      | 101000          |
| 18                       | 1018249808                  | 10/18/24 322                        | 16.08                   |         |      | 1000 20 420440 | 272    |      | 101000          |
| 19                       | 1018249808                  | 10/18/24 SHOP                       | 9.99                    |         |      | 1000 20 420440 | 270    |      | 101000          |
| 20                       | 1018249808                  | 10/18/24 CA WL DEF                  | 13.99                   |         |      | 1000 20 420440 | 231    |      | 101000          |
| 21                       | 1018249808                  | 10/18/24 SHIPPING                   | 53.14                   |         |      | 1000 10 420510 | 311    |      | 101000          |
| 22                       | 1018249808                  | 10/18/24 363                        | 46.75                   |         |      | 1000 20 420440 | 272    |      | 101000          |
| 23                       | 1018249808                  | 10/18/24 CA WL LODGING              | 93.15                   |         |      | 1000 50 420460 | 379    |      | 101000          |
| 24                       | 1018249808                  | 10/18/24 CA WL LODGING              | 93.15                   |         |      | 1000 50 420460 | 379    |      | 101000          |
| 25                       | 1018249808                  | 10/18/24 CA WL LODGING              | 93.15                   |         |      | 1000 50 420460 | 379    |      | 101000          |
| 26                       | 1018249808                  | 10/18/24 CA WL LODGING              | 356.40                  |         |      | 1000 50 420460 | 379    |      | 101000          |
| 27                       | 1018249808                  | 10/18/24 CA WA ICE                  | 6.49                    |         |      | 1000 50 420460 | 379    |      | 101000          |
| 28                       | 1018249808                  | 10/18/24 CA WL LODGING              | 93.15                   |         |      | 1000 50 420460 | 379    |      | 101000          |

11/08/24  
15:06:16

MISSOULA RURAL FIRE DISTRICT  
Claim Details  
For the Accounting Period: 10/24

Page: 3 of 16  
Report ID: AP100V

\* ... Over spent expenditure

| Claim/<br>Line #         | Check<br>Invoice # | Vendor #/Name/<br>Inv Date/Description | Document \$/<br>Line \$ | Disc \$ | PO # | Fund Org Acct  | Object | Proj | Cash<br>Account |
|--------------------------|--------------------|--|-------------------------|---------|------|----------------|--------|------|-----------------|
| 29                       | 1018249808         | 10/18/24 CA WL LODGING                 | 93.15                   |         |      | 1000 50 420460 | 379    |      | 101000          |
| 30                       | 1018249808         | 10/18/24 CA WL LODGING                 | 93.15                   |         |      | 1000 50 420460 | 379    |      | 101000          |
| 31                       | 1018249808         | 10/18/24 CA WL DEF                     | 24.95                   |         |      | 1000 20 420440 | 231    |      | 101000          |
| 32                       | 1018249808         | 10/18/24 CA WL LODGING                 | 307.40                  |         |      | 1000 50 420460 | 379    |      | 101000          |
| 33                       | 1018249808         | 10/18/24 CA WL LODGING                 | 307.40                  |         |      | 1000 50 420460 | 379    |      | 101000          |
| 34                       | 1018249808         | 10/18/24 CA WL LODGING                 | 307.40                  |         |      | 1000 50 420460 | 379    |      | 101000          |
| 35                       | 1018249808         | 10/18/24 CA WL LODGING                 | 307.40                  |         |      | 1000 50 420460 | 379    |      | 101000          |
| 36                       | 1018249808         | 10/18/24 CA WL LODGING                 | 307.40                  |         |      | 1000 50 420460 | 379    |      | 101000          |
| 37                       | 1018249808         | 10/18/24 CA WL LODGING                 | 307.40                  |         |      | 1000 50 420460 | 379    |      | 101000          |
| 38                       | 1018249808         | 10/18/24 CA WL LODGING                 | 307.40                  |         |      | 1000 50 420460 | 379    |      | 101000          |
| 39                       | 1018249808         | 10/18/24 CA WL DEF                     | 24.95                   |         |      | 1000 20 420440 | 231    |      | 101000          |
| 40                       | 1018249808         | 10/18/24 CA WL LODGING                 | 307.38                  |         |      | 1000 50 420460 | 379    |      | 101000          |
| 41                       | 1018249808         | 10/18/24 CA WL LODGING                 | 307.38                  |         |      | 1000 50 420460 | 379    |      | 101000          |
| <b>Total for Vendor:</b> |                    |  | <b>5,462.30</b>         |         |      |                |        |      |                 |
| 45721                    | 82674S             | 1299 CITY OF MISSOULA-FINANCE          | 76.06                   |         |      |                |        |      |                 |
| 1                        | 1001247950         | 10/01/24 STA 1                         | 76.06                   |         |      | 1000 10 420510 | 341    |      | 101000          |
| 45789                    | 82727S             | 1299 CITY OF MISSOULA-FINANCE          | 52.57                   |         |      |                |        |      |                 |
| 1                        | 1024247965         | 10/24/24 STA 6                         | 22.19                   |         |      | 1000 10 420510 | 341    |      | 101000          |
| 2                        | 1029244500         | 10/29/24 STA 2                         | 30.38                   |         |      | 1000 10 420510 | 341    |      | 101000          |
| <b>Total for Vendor:</b> |                    |  | <b>128.63</b>           |         |      |                |        |      |                 |
| 45796                    | 82728S             | 216 CLEARWATER CREDIT UNION            | 8,748.59                |         |      |                |        |      |                 |
| 1                        | 1022244600         | 10/22/24 SCHNEE TRUSTEE CONF           | 250.00                  |         |      | 1000 10 420510 | 380    |      | 101000          |
| 2                        | 1022244600         | 10/22/24 FINLAY TRUSTEE CONF           | 250.00                  |         |      | 1000 10 420510 | 380    |      | 101000          |
| 3                        | 1022244600         | 10/22/24 PAULSEN TRUSTEE CONF          | 250.00                  |         |      | 1000 10 420510 | 380    |      | 101000          |
| 4                        | 1022244600         | 10/22/24 CULP PRYOR                    | 249.00                  |         |      | 1000 10 420510 | 380    |      | 101000          |
| 5                        | 1022244600         | 10/22/24 WILKINSON PRYOR               | 249.00                  |         |      | 1000 10 420510 | 380    |      | 101000          |
| 6                        | 1022244600         | 10/22/24 EXTERNAL HARD DRIVE           | 134.98                  |         |      | 1000 10 420510 | 268    |      | 101000          |
| 7                        | 1022244600         | 10/22/24 PUBLIC NOTICE - SURPLUS VE    | 62.10                   |         |      | 1000 10 420510 | 337    |      | 101000          |
| 8                        | 1022244600         | 10/22/24 FP SUPPLIES                   | 126.00                  |         |      | 1000 40 420410 | 220    |      | 101000          |
| 9                        | 1022244600         | 10/22/24 ZOOM                          | 16.59                   |         |      | 1000 10 420510 | 368    |      | 101000          |
| 10                       | 1022244600         | 10/22/24 LUBKE NFA FLIGHT              | 19.99                   |         |      | 1000 50 420460 | 379    |      | 101000          |
| 11                       | 1022244600         | 10/22/24 LUBKE NFA FLIGHT              | 14.99                   |         |      | 1000 50 420460 | 379    |      | 101000          |
| 12                       | 1022244600         | 10/22/24 LUBKE NFA FLIGHT              | 105.99                  |         |      | 1000 50 420460 | 379    |      | 101000          |
| 13                       | 1022244600         | 10/22/24 LUBKE NFA FLIGHT              | 66.99                   |         |      | 1000 50 420460 | 379    |      | 101000          |

11/08/24  
15:06:16

MISSOULA RURAL FIRE DISTRICT  
Claim Details  
For the Accounting Period: 10/24

Page: 4 of 16  
Report ID: AP100V

\* ... Over spent expenditure

| Claim/<br>Line #         | Check<br>Invoice #/Inv | Vendor #/Name/<br>Date/Description  | Document \$/<br>Line \$ | Disc \$ | PO # | Fund Org Acct  | Object | Proj | Cash<br>Account |
|--------------------------|------------------------|-------------------------------------|-------------------------|---------|------|----------------|--------|------|-----------------|
| 14                       | 1022244600             | 10/22/24 FM SUPPLIES                | 126.00                  |         |      | 1000 40 420410 | 220    |      | 101000          |
| 15                       | 1022244600             | 10/22/24 LUBKE NFA FLIGHT           | 338.97                  |         |      | 1000 50 420460 | 379    |      | 101000          |
| 16                       | 1022244600             | 10/22/24 LUBKE NFA FLIGHT           | 30.00                   |         |      | 1000 50 420460 | 379    |      | 101000          |
| 17                       | 1022244600             | 10/22/24 LUBKE NFA FLIGHT           | 216.97                  |         |      | 1000 50 420460 | 379    |      | 101000          |
| 18                       | 1022244600             | 10/22/24 NEW HIRE DRIVING RECORD    | 7.87                    |         |      | 1000 10 420510 | 356    |      | 101000          |
| 19                       | 1022244600             | 10/22/24 FEES                       | 4.16                    |         |      | 1000 10 420510 | 356    |      | 101000          |
| 20                       | 1022244600             | 10/22/24 TRAINING SUPPLIES          | 23.98                   |         |      | 1000 30 420430 | 220    |      | 101000          |
| 21                       | 1022244600             | 10/22/24 FM SUPPLIES                | -126.00                 |         |      | 1000 40 420410 | 220    |      | 101000          |
| 22                       | 1022244600             | 10/22/24 301 CAR WASH               | 26.99                   |         |      | 1000 20 420440 | 372    |      | 101000          |
| 23                       | 1022244600             | 10/22/24 302 CAR WASH               | 26.99                   |         |      | 1000 20 420440 | 372    |      | 101000          |
| 24                       | 1022244600             | 10/22/24 303 CAR WASH               | 26.99                   |         |      | 1000 20 420440 | 372    |      | 101000          |
| 25                       | 1022244600             | 10/22/24 HORSENS ARBITRATION LODGIN | 345.44                  |         |      | 1000 10 420510 | 379    |      | 101000          |
| 26                       | 1022244600             | 10/22/24 GA EMAC FLIGHT             | 1,095.78                |         |      | 1000 50 420460 | 379    |      | 101000          |
| 27                       | 1022244600             | 10/22/24 GA EMAC FLIGHT             | 1,608.08                |         |      | 1000 50 420460 | 379    |      | 101000          |
| 28                       | 1022244600             | 10/22/24 GA EMAC FLIGHT             | 49.99                   |         |      | 1000 50 420460 | 379    |      | 101000          |
| 29                       | 1022244600             | 10/22/24 GA EMAC FLIGHT             | 50.00                   |         |      | 1000 50 420460 | 379    |      | 101000          |
| 30                       | 1022244600             | 10/22/24 GA EMAC FLIGHT             | 40.00                   |         |      | 1000 50 420460 | 379    |      | 101000          |
| 31                       | 1022244600             | 10/22/24 OPERATING SYSTEM UPGRADE   | 99.00                   |         |      | 1000 10 420510 | 368    |      | 101000          |
| 32                       | 1022244600             | 10/22/24 NEW HIRE DRIVING RECORD    | 7.87                    |         |      | 1000 10 420510 | 356    |      | 101000          |
| 33                       | 1022244600             | 10/22/24 SHIPPING                   | 9.68                    |         |      | 1000 10 420510 | 311    |      | 101000          |
| 34                       | 1022244600             | 10/22/24 MISSOULIAN                 | 1.00                    |         |      | 1000 10 420510 | 356    |      | 101000          |
| 35                       | 1022244600             | 10/22/24 DUFNER ALERT FLIGHT        | 30.00                   |         |      | 1000 50 420460 | 379    |      | 101000          |
| 36                       | 1022244600             | 10/22/24 DUFNER ALERT FLIGHT        | 69.99                   |         |      | 1000 50 420460 | 379    |      | 101000          |
| 37                       | 1022244600             | 10/22/24 DUFNER ALERT FLIGHT        | 76.99                   |         |      | 1000 50 420460 | 379    |      | 101000          |
| 38                       | 1022244600             | 10/22/24 DUFNER ALERT FLIGHT        | 69.99                   |         |      | 1000 50 420460 | 379    |      | 101000          |
| 39                       | 1022244600             | 10/22/24 DUFNER ALERT FLIGHT        | 69.99                   |         |      | 1000 50 420460 | 379    |      | 101000          |
| 40                       | 1022244600             | 10/22/24 DUFNER ALERT FLIGHT        | 890.33                  |         |      | 1000 50 420460 | 379    |      | 101000          |
| 41                       | 1022244600             | 10/22/24 CA WL LODGING              | 307.38                  |         |      | 1000 50 420460 | 379    |      | 101000          |
| 42                       | 1022244600             | 10/22/24 CA WL LODGING              | 307.38                  |         |      | 1000 50 420460 | 379    |      | 101000          |
| 43                       | 1022244600             | 10/22/24 CA WL LODGING              | 307.40                  |         |      | 1000 50 420460 | 379    |      | 101000          |
| 44                       | 1022244600             | 10/22/24 GA EMAC LODGING            | 174.05                  |         |      | 1000 50 420460 | 379    |      | 101000          |
| 45                       | 1022244600             | 10/22/24 GA EMAC LODGING            | 174.05                  |         |      | 1000 50 420460 | 379    |      | 101000          |
| 46                       | 1022244600             | 10/22/24 CA WL LODGING              | 307.40                  |         |      | 1000 50 420460 | 379    |      | 101000          |
| 47                       | 1022244600             | 10/22/24 RAM MOUNTS                 | 117.28                  |         |      | 1000 10 420510 | 268    |      | 101000          |
| 48                       | 1022244600             | 10/22/24 ADOBE                      | 12.99                   |         |      | 1000 10 420510 | 368    |      | 101000          |
| 49                       | 1022244600             | 10/22/24 BUSINESS CARDS             | 27.98                   |         |      | 1000 10 420510 | 320    |      | 101000          |
| <b>Total for Vendor:</b> |                        |                                     | <b>8,748.59</b>         |         |      |                |        |      |                 |

11/08/24  
15:06:16

MISSOULA RURAL FIRE DISTRICT  
Claim Details  
For the Accounting Period: 10/24

Page: 5 of 16  
Report ID: AP100V

\* ... Over spent expenditure

| Claim/<br>Line # | Check<br>Invoice #/Inv Date/Description | Vendor #/Name/<br>Invoice #/Inv Date/Description | Document \$/<br>Line \$ | Disc \$ | PO # | Fund Org Acct  | Object | Proj | Cash<br>Account |
|------------------|---|--|-------------------------|---------|------|----------------|--------|------|-----------------|
| 45755            | 82709S                                  | 1921 CLINICAL ENGINEERING SERVICES,              | 2,558.50                |         |      |                |        |      |                 |
| 1                | 2247 10/22/24                           | MEDICAL SUPPLIES                                 | 2,558.50                |         |      | 1000 80 420461 | 222    |      | 101000          |
|                  |   | <b>Total for Vendor:</b>                         | <b>2,558.50</b>         |         |      |                |        |      |                 |
| 45766            | 82729S                                  | 1297 COOPER BERRY                                | 26.12                   |         |      |                |        |      |                 |
| 1                | 103124CB01 10/31/24                     | STA 1  | 26.12                   |         |      | 1000 50 420460 | 361    |      | 101000          |
|                  |   | <b>Total for Vendor:</b>                         | <b>26.12</b>            |         |      |                |        |      |                 |
| 45650            | 82659S                                  | 1502 CORY HORSENS                                | 200.00                  |         |      |                |        |      |                 |
| 1                | 100224CH01 10/02/24                     | INCIDENT MEAL                                    | 200.00                  |         |      | 1000 50 420460 | 379    |      | 101000          |
| 45725            | 82675S                                  | 1502 CORY HORSENS                                | 324.00                  |         |      |                |        |      |                 |
| 1                | 101624CH01 10/16/24                     | HORSENS 322 TRANSPORT                            | 324.00                  |         |      | 1000 10 420510 | 379    |      | 101000          |
| 45747            | 82698S                                  | 1502 CORY HORSENS                                | 421.45                  |         |      |                |        |      |                 |
| 1                | 102824CH01 10/28/24                     | HORSENS 301 TRAVEL LODGING                       | 143.97                  |         |      | 1000 10 420510 | 379    |      | 101000          |
| 2                | 102824CH01 10/28/24                     | 301  | 29.99                   |         |      | 1000 20 420440 | 272    |      | 101000          |
| 3                | 102824CH01 10/28/24                     | HORSENS 301 TRAVEL LODGING                       | 121.97                  |         |      | 1000 10 420510 | 379    |      | 101000          |
| 4                | 102824CH01 10/28/24                     | HORSENS 301 TRAVEL LODGING                       | 114.97                  |         |      | 1000 10 420510 | 379    |      | 101000          |
| 5                | 102824CH01 10/28/24                     | 301 CAR WASH                                     | 10.55                   |         |      | 1000 20 420440 | 372    |      | 101000          |
|                  |   | <b>Total for Vendor:</b>                         | <b>945.45</b>           |         |      |                |        |      |                 |
| 45795            | -99553C                                 | 76 CULLIGAN WATER CONDITIONING                   | 164.50                  |         |      |                |        |      |                 |
| 1                | 1025247138 10/25/24                     | ALL STATIONS                                     | 164.50                  |         |      | 1000 10 420510 | 341    |      | 101000          |
|                  |   | <b>Total for Vendor:</b>                         | <b>164.50</b>           |         |      |                |        |      |                 |
| 45783            | 82710S                                  | 1163 DIRECT AUTOMOTIVE DISTRIBUTING              | 60.72                   |         |      |                |        |      |                 |
| 1                | 071B7532 10/24/24                       | LUBRICANT  | 60.72                   |         |      | 1000 20 420440 | 232    |      | 101000          |
|                  |   | <b>Total for Vendor:</b>                         | <b>60.72</b>            |         |      |                |        |      |                 |
| 45710            | 82676S                                  | 1723 ECO TECH LANDSCAPES INC.                    | 65.00                   |         |      |                |        |      |                 |
| 1                | 2334 10/09/24                           | STA 1  | 65.00                   |         |      | 1000 50 420460 | 361    |      | 101000          |

11/08/24  
15:06:16

MISSOULA RURAL FIRE DISTRICT  
Claim Details  
For the Accounting Period: 10/24

Page: 6 of 16  
Report ID: AP100V

\* ... Over spent expenditure

| Claim/<br>Line # | Check<br>Invoice #/Inv Date/Description | Vendor #/Name/<br>Date/Description    | Document \$/<br>Line \$ | Disc \$ | PO # | Fund Org Acct  | Object | Proj | Cash<br>Account |
|------------------|---|---------------------------------------|-------------------------|---------|------|----------------|--------|------|-----------------|
| 45751            | 82699S                                  | 1723 ECO TECH LANDSCAPES INC.         | 85.00                   |         |      |                |        |      |                 |
| 1                | 2304 10/04/24                           | STA 4                                 | 85.00                   |         |      | 1000 50 420460 | 364    |      | 101000          |
|                  |   | <b>Total for Vendor:</b>              | <b>150.00</b>           |         |      |                |        |      |                 |
| 45780            | -99557C                                 | 1415 GECKO FENCE & LANDSCAPE, LLC     | 70.00                   |         |      |                |        |      |                 |
| 1                | 30942 10/31/24                          | STA 1 LAWN MOWING                     | 70.00                   |         |      | 1000 50 420460 | 361    |      | 101000          |
|                  |   | <b>Total for Vendor:</b>              | <b>70.00</b>            |         |      |                |        |      |                 |
| 45771            | -99561C                                 | 141 GENERAL FIRE APPARATUS            | 38.51                   |         |      |                |        |      |                 |
| 1                | 18441 04/30/24                          | 341                                   | 535.68                  |         |      | 1000 20 420440 | 272    |      | 101000          |
| 2                | 18482 05/06/24                          | 328                                   | -1,371.37               |         |      | 1000 20 420440 | 272    |      | 101000          |
| 3                | 18634 05/29/24                          | 327                                   | 176.75                  |         |      | 1000 20 420440 | 272    |      | 101000          |
| 4                | 18892 07/02/24                          | 311                                   | 259.56                  |         |      | 1000 20 420440 | 272    |      | 101000          |
| 5                | 19204 08/12/24                          | 328                                   | 91.81                   |         |      | 1000 20 420440 | 272    |      | 101000          |
| 6                | 19543 10/02/24                          | 317                                   | 152.69                  |         |      | 1000 20 420440 | 272    |      | 101000          |
| 7                | 19609 10/14/24                          | 328                                   | 193.39                  |         |      | 1000 20 420440 | 272    |      | 101000          |
|                  |   | <b>Total for Vendor:</b>              | <b>38.51</b>            |         |      |                |        |      |                 |
| 45763            | -99563C                                 | 1910 GLOBAL TRAFFIC TECHNOLOGIES, LLC | 364.75                  |         |      |                |        |      |                 |
| 1                | 66513 10/15/24                          | 328                                   | 364.75                  |         |      | 1000 20 420440 | 272    |      | 101000          |
|                  |   | <b>Total for Vendor:</b>              | <b>364.75</b>           |         |      |                |        |      |                 |
| 45729            | 82688S                                  | 1400 GRANTMASTERS, INC                | 1,500.00                |         |      |                |        |      |                 |
| 1                | 100124GM01 10/01/24                     | FIRST PAYMENT 2024 AFG                | 1,500.00                |         |      | 1000 10 420510 | 356    |      | 101000          |
|                  |   | <b>Total for Vendor:</b>              | <b>1,500.00</b>         |         |      |                |        |      |                 |
| 45743            | 82689S                                  | 310 GREGORY ORR                       | 1,128.00                |         |      |                |        |      |                 |
| 1                | 102424GO01 10/24/24                     | ORR GA EMAC PER DIEM                  | 1,128.00                |         |      | 1000 50 420460 | 379    |      | 101000          |
| 45746            | 82700S                                  | 310 GREGORY ORR                       | 119.67                  |         |      |                |        |      |                 |
| 1                | 103024GO01 10/30/24                     | GA EMAC FUEL                          | 29.67                   |         |      | 1000 20 420440 | 231    |      | 101000          |
| 2                | 102724GO01 10/27/24                     | GA EMAC BAGGAGE                       | 90.00                   |         |      | 1000 50 420460 | 379    |      | 101000          |
|                  |   | <b>Total for Vendor:</b>              | <b>1,247.67</b>         |         |      |                |        |      |                 |

11/08/24  
15:06:16

MISSOULA RURAL FIRE DISTRICT  
Claim Details  
For the Accounting Period: 10/24

Page: 7 of 16  
Report ID: AP100V

\* ... Over spent expenditure

| Claim/<br>Line # | Check<br>Invoice #/Inv Date | Vendor #/Name/<br>Description  | Document \$/<br>Line \$ | Disc \$ | PO # | Fund Org Acct  | Object | Proj | Cash<br>Account |
|------------------|-----------------------------|--------------------------------|-------------------------|---------|------|----------------|--------|------|-----------------|
| 45788            | -99556C                     | 1506 HARLOW'S TRUCK CENTER     | 99.83                   |         |      |                |        |      |                 |
| 1                | 02P24611 10/21/24           | 322                            | 99.83                   |         |      | 1000 20 420440 | 272    |      | 101000          |
|                  |                             | <b>Total for Vendor:</b>       | <b>99.83</b>            |         |      |                |        |      |                 |
| 45805            | 82740S                      | 1258 I-STATE TRUCK CENTERS     | 75.45                   |         |      |                |        |      |                 |
| 1                | 3197016:01 10/01/24         | 311                            | -97.60                  |         |      | 1000 20 420440 | 272    |      | 101000          |
| 2                | 3197920:01 10/17/24         | 341                            | 55.98                   |         |      | 1000 20 420440 | 272    |      | 101000          |
| 3                | 3197978:01 10/30/24         | 351                            | 45.11                   |         |      | 1000 20 420440 | 272    |      | 101000          |
| 4                | 3197978:01 10/30/24         | SHOP                           | 71.96                   |         |      | 1000 20 420440 | 270    |      | 101000          |
|                  |                             | <b>Total for Vendor:</b>       | <b>75.45</b>            |         |      |                |        |      |                 |
| 45797            | 82730S                      | 1840 IMAGE TREND               | 4,980.00                |         |      |                |        |      |                 |
| 1                | INV8480 06/07/24            | SLATE                          | 4,980.00                |         |      | 1000 10 420510 | 368    |      | 101000          |
|                  |                             | <b>Total for Vendor:</b>       | <b>4,980.00</b>         |         |      |                |        |      |                 |
| 45731            | 82690S                      | 1351 JON MUIR                  | 1,273.25                |         |      |                |        |      |                 |
| 1                | 102024JM01 10/20/24         | MUIR GA EMAC PER DIEM          | 1,128.00                |         |      | 1000 50 420460 | 379    |      | 101000          |
| 2                | 102124JM01 10/21/24         | FUEL GA EMAC                   | 55.25                   |         |      | 1000 20 420440 | 231    |      | 101000          |
| 3                | 102124JM01 10/21/24         | MUIR GA EMAC BAGGAGE           | 90.00                   |         |      | 1000 20 420440 | 379    |      | 101000          |
|                  |                             | <b>Total for Vendor:</b>       | <b>1,273.25</b>         |         |      |                |        |      |                 |
| 45713            | 82677S                      | 1905 KALEVA LAW OFFICE         | 1,856.25                |         |      |                |        |      |                 |
| 1                | 7792 10/08/24               | LEGAL SERVICES                 | 1,856.25                |         |      | 1000 10 420510 | 352    |      | 101000          |
|                  |                             | <b>Total for Vendor:</b>       | <b>1,856.25</b>         |         |      |                |        |      |                 |
| 45803            | 82736S                      | 1638 KARL TYLER'S EXPRESS LUBE | 92.64                   |         |      |                |        |      |                 |
| 1                | 110836 10/23/24             | 309                            | 92.64                   |         |      | 1000 20 420440 | 372    |      | 101000          |
|                  |                             | <b>Total for Vendor:</b>       | <b>92.64</b>            |         |      |                |        |      |                 |
| 45715            | 82678S                      | 410 KEPRO                      | 782.28                  |         |      |                |        |      |                 |
| 1                | INV-007675 10/01/24         | ADMIN                          | 66.78                   |         |      | 1000 10 420510 | 147    |      | 101000          |
| 2                | INV-007675 10/01/24         | RM                             | 19.08                   |         |      | 1000 20 420440 | 147    |      | 101000          |
| 3                | INV-007675 10/01/24         | TO                             | 9.54                    |         |      | 1000 30 420430 | 147    |      | 101000          |
| 4                | INV-007675 10/01/24         | FP                             | 19.08                   |         |      | 1000 40 420410 | 147    |      | 101000          |
| 5                | INV-007675 10/01/24         | SUP                            | 496.08                  |         |      | 1000 50 420460 | 147    |      | 101000          |
| 6                | INV-007675 10/01/24         | VOL                            | 171.72                  |         |      | 1000 60 420462 | 147    |      | 101000          |
|                  |                             | <b>Total for Vendor:</b>       | <b>782.28</b>           |         |      |                |        |      |                 |

11/08/24  
15:06:16

MISSOULA RURAL FIRE DISTRICT  
Claim Details  
For the Accounting Period: 10/24

Page: 8 of 16  
Report ID: AP100V

\* ... Over spent expenditure

| Claim/<br>Line # | Check<br>Invoice #/Inv Date/Description | Vendor #/Name/<br>Invoice #/Inv Date/Description | Document \$/<br>Line \$ | Disc \$ | PO # | Fund Org Acct  | Object | Proj | Cash<br>Account |
|------------------|---|--|-------------------------|---------|------|----------------|--------|------|-----------------|
| 45779            | 82737S                                  | 1347 KRONOS                                      | 2,021.46                |         |      |                |        |      |                 |
| 1                | 12318248                                | 10/30/24 TELESTAFF                               | 2,021.46                |         |      | 1000 10 420510 | 368    |      | 101000          |
|                  |   | <b>Total for Vendor:</b>                         | <b>2,021.46</b>         |         |      |                |        |      |                 |
| 45756            | 82711S                                  | 202 LEGACY GLASS, LLC                            | 356.00                  |         |      |                |        |      |                 |
| 1                | 81924                                   | 10/22/24 STA 5                                   | 316.00                  |         |      | 1000 50 420460 | 365    |      | 101000          |
| 2                | 81936                                   | 10/24/24 310                                     | 40.00                   |         |      | 1000 20 420440 | 372    |      | 101000          |
|                  |   | <b>Total for Vendor:</b>                         | <b>356.00</b>           |         |      |                |        |      |                 |
| 45800            | -99551C                                 | 1282 LIFE-ASSIST, INC                            | 2,810.71                |         |      |                |        |      |                 |
| 1                | 1516911                                 | 10/07/24 MEDICAL SUPPLIES                        | 949.84                  |         |      | 1000 80 420461 | 222    |      | 101000          |
| 2                | 1521775                                 | 10/22/24 MEDICAL SUPPLIES                        | 610.78                  |         |      | 1000 80 420461 | 222    |      | 101000          |
| 3                | 1524336                                 | 10/30/24 MEDICAL SUPPLIES                        | 1,250.09                |         |      | 1000 80 420461 | 222    |      | 101000          |
|                  |   | <b>Total for Vendor:</b>                         | <b>2,810.71</b>         |         |      |                |        |      |                 |
| 45754            | 82712S                                  | 185 MISSOULA CHEVROLET                           | 87.52                   |         |      |                |        |      |                 |
| 1                | 580206                                  | 10/16/24 307                                     | 87.52                   |         |      | 1000 20 420440 | 272    |      | 101000          |
|                  |   | <b>Total for Vendor:</b>                         | <b>87.52</b>            |         |      |                |        |      |                 |
| 45750            | 82701S                                  | 208 MISSOULA COUNTY MEDICAL BENEFITS             | 99,022.00               |         |      |                |        |      |                 |
| 1                | 0000012069                              | 10/21/24 ADMIN                                   | 11,391.80               |         |      | 1000 10 420510 | 143    |      | 101000          |
| 2                | 0000012069                              | 10/21/24 RM/ARM                                  | 4,232.20                |         |      | 1000 20 420440 | 143    |      | 101000          |
| 3                | 0000012069                              | 10/21/24 TO/RVC                                  | 4,232.20                |         |      | 1000 30 420430 | 143    |      | 101000          |
| 4                | 0000012069                              | 10/21/24 DFM                                     | 2,116.10                |         |      | 1000 40 420410 | 143    |      | 101000          |
| 5                | 0000012069                              | 10/21/24 SUP                                     | 77,049.70               |         |      | 1000 50 420460 | 143    |      | 101000          |
|                  |   | <b>Total for Vendor:</b>                         | <b>99,022.00</b>        |         |      |                |        |      |                 |
| 45765            | 82713S                                  | 228 MISSOULA COUNTY TREASURER                    | 710.00                  |         |      |                |        |      |                 |
| 1                | 561                                     | 10/03/24 PAPER                                   | 450.00                  |         |      | 1000 10 420510 | 210    |      | 101000          |
| 2                | 602                                     | 10/24/24 SEPT TELE SERVICES                      | 260.00                  |         |      | 1000 10 420510 | 345    |      | 101000          |
| 45809            | 82731S                                  | 228 MISSOULA COUNTY TREASURER                    | 691.86                  |         |      |                |        |      |                 |
| 1                | 101224STA1                              | 10/12/24 STA 1 PARCEL #5906367                   | 23.96                   |         |      | 1000 10 420510 | 341    |      | 101000          |
| 2                | 101224STA2                              | 10/12/24 STA 2 PARCEL #5940307                   | 274.73                  |         |      | 1000 10 420510 | 341    |      | 101000          |
| 3                | 101224STA4                              | 10/12/24 STA 4 PARCEL #420293005                 | 34.60                   |         |      | 1000 10 420510 | 341    |      | 101000          |
| 4                | 101224STA5                              | 10/12/24 STA 5 PARCEL #5905087                   | 34.60                   |         |      | 1000 10 420510 | 341    |      | 101000          |

11/08/24  
15:06:16

MISSOULA RURAL FIRE DISTRICT  
Claim Details  
For the Accounting Period: 10/24

Page: 9 of 16  
Report ID: AP100V

\* ... Over spent expenditure

| Claim/<br>Line # | Check<br>Invoice #/Inv Date/Description   | Vendor #/Name/<br>Date/Description | Document \$/<br>Line \$ | Disc \$ | PO # | Fund Org Acct  | Object | Proj | Cash<br>Account |
|------------------|---|------------------------------------|-------------------------|---------|------|----------------|--------|------|-----------------|
| 5                | 101224STA6 10/12/24                       | STA 6 PARCEL #5844740              | 323.97                  |         |      | 1000 10 420510 | 341    |      | 101000          |
|                  |   | <b>Total for Vendor:</b>           | <b>1,401.86</b>         |         |      |                |        |      |                 |
| 45792            | 82732S 211 MISSOULA COUNTY WORKERS COMP   |                                    | 433.17                  |         |      |                |        |      |                 |
| 1                | 1031247704 10/31/24                       | VFF/RF OCT HOURS                   | 433.17                  |         |      | 1000 60 420462 | 146    |      | 101000          |
|                  |   | <b>Total for Vendor:</b>           | <b>433.17</b>           |         |      |                |        |      |                 |
| 45700            | 82660S 230 MISSOULA ELECTRIC COOPERATIVE  |                                    | 515.56                  |         |      |                |        |      |                 |
| 1                | 1004243950 10/04/24                       | STA 2                              | 20.48                   |         |      | 1000 10 420510 | 341    |      | 101000          |
| 2                | 1004243950 10/04/24                       | STA 6                              | 237.41                  |         |      | 1000 10 420510 | 341    |      | 101000          |
| 3                | 1004243950 10/04/24                       | STA 2                              | 257.67                  |         |      | 1000 10 420510 | 341    |      | 101000          |
|                  |   | <b>Total for Vendor:</b>           | <b>515.56</b>           |         |      |                |        |      |                 |
| 45776            | 82714S 231 MISSOULA EMERGENCY SERVICE INC |                                    | 1,446.21                |         |      |                |        |      |                 |
| 1                | 2024-38 10/31/24                          | N LAPINSKI AEMT                    | 1,446.21                |         |      | 1000 50 420460 | 380    |      | 101000          |
|                  |   | <b>Total for Vendor:</b>           | <b>1,446.21</b>         |         |      |                |        |      |                 |
| 45770            | 82715S 235 MISSOULA MOTOR PARTS           |                                    | 1,037.52                |         |      |                |        |      |                 |
| 1                | 885553 10/02/24                           | SHOP                               | 23.94                   |         |      | 1000 20 420440 | 270    |      | 101000          |
| 2                | 38105 10/08/24                            | FUEL                               | 11.99                   |         |      | 1000 20 420440 | 231    |      | 101000          |
| 3                | 38105 10/08/24                            | STA 1                              | 18.72                   |         |      | 1000 50 420460 | 361    |      | 101000          |
| 4                | 888478 10/09/24                           | VAN                                | 339.98                  |         |      | 1000 20 420440 | 272    |      | 101000          |
| 5                | 891109 10/16/24                           | STA 2                              | 17.28                   |         |      | 1000 50 420460 | 362    |      | 101000          |
| 6                | 891109 10/16/24                           | SMALL TOOLS                        | 35.18*                  |         |      | 1000 50 420460 | 234    |      | 101000          |
| 7                | 40153 10/17/24                            | STA 5                              | 61.42                   |         |      | 1000 50 420460 | 365    |      | 101000          |
| 8                | 891681 10/17/24                           | STA 4                              | 17.28                   |         |      | 1000 50 420460 | 364    |      | 101000          |
| 9                | 893025 10/21/24                           | FUSION                             | 139.29                  |         |      | 1000 20 420440 | 272    |      | 101000          |
| 10               | 893025 10/21/24                           | 303                                | 23.10                   |         |      | 1000 20 420440 | 272    |      | 101000          |
| 11               | 894372 10/24/24                           | 301                                | 5.95                    |         |      | 1000 20 420440 | 272    |      | 101000          |
| 12               | 894372 10/24/24                           | 322                                | 65.29                   |         |      | 1000 20 420440 | 272    |      | 101000          |
| 13               | 894483 10/24/24                           | STA 6                              | 37.72                   |         |      | 1000 50 420460 | 366    |      | 101000          |
| 14               | 41773 10/25/24                            | STA 1                              | 89.01                   |         |      | 1000 50 420460 | 361    |      | 101000          |
| 15               | 894984 10/26/24                           | STA 2                              | 60.10                   |         |      | 1000 50 420460 | 362    |      | 101000          |
| 16               | 895670 10/28/24                           | 301                                | -37.00                  |         |      | 1000 20 420440 | 272    |      | 101000          |
| 17               | 896197 10/30/24                           | 305                                | 46.11                   |         |      | 1000 20 420440 | 272    |      | 101000          |
| 18               | 896410 10/30/24                           | LUBRICANT                          | 82.16                   |         |      | 1000 20 420440 | 232    |      | 101000          |
|                  |   | <b>Total for Vendor:</b>           | <b>1,037.52</b>         |         |      |                |        |      |                 |

11/08/24  
15:06:16

MISSOULA RURAL FIRE DISTRICT  
Claim Details  
For the Accounting Period: 10/24

Page: 10 of 16  
Report ID: AP100V

\* ... Over spent expenditure

| Claim/<br>Line # | Check<br>Invoice #/Inv Date/Description | Vendor #/Name/<br>Date/Description  | Document \$/<br>Line \$ | Disc \$ | PO # | Fund Org Acct  | Object | Proj | Cash<br>Account |
|------------------|---|-------------------------------------|-------------------------|---------|------|----------------|--------|------|-----------------|
| 45801            | -99550C                                 | 244 MISSOULA TEXTILE SERVICES       | 427.79                  |         |      |                |        |      |                 |
| 1                | 10312420                                | 10/31/24 ALL STATIONS               | 427.79                  |         |      | 1000 10 420510 | 356    |      | 101000          |
|                  |   | <b>Total for Vendor:</b>            | <b>427.79</b>           |         |      |                |        |      |                 |
| 45774            | 82716S                                  | 1904 MONTANA BROOM AND BRUSH SUPPLY | 1,379.83                |         |      |                |        |      |                 |
| 1                | 1464752                                 | 10/08/24 STA 4                      | 84.97                   |         |      | 1000 50 420460 | 364    |      | 101000          |
| 2                | 1464753                                 | 10/08/24 STA 6                      | 72.72                   |         |      | 1000 50 420460 | 366    |      | 101000          |
| 3                | 1464757                                 | 10/08/24 STA 5                      | 88.51                   |         |      | 1000 50 420460 | 365    |      | 101000          |
| 4                | 1464760                                 | 10/08/24 SCBA                       | 35.88                   |         |      | 1000 50 420460 | 204    |      | 101000          |
| 5                | 1465799                                 | 10/08/24 STA 2                      | 34.50                   |         |      | 1000 50 420460 | 362    |      | 101000          |
| 6                | 1465805                                 | 10/10/24 STA 2                      | 21.99                   |         |      | 1000 50 420460 | 362    |      | 101000          |
| 7                | 1469954                                 | 10/17/24 STA 1                      | 50.22                   |         |      | 1000 50 420460 | 361    |      | 101000          |
| 8                | 1470447                                 | 10/18/24 STA 5                      | 42.45                   |         |      | 1000 50 420460 | 365    |      | 101000          |
| 9                | 1470449                                 | 10/18/24 STA 1                      | 184.25                  |         |      | 1000 50 420460 | 361    |      | 101000          |
| 10               | 1470451                                 | 10/18/24 STA 2                      | 104.57                  |         |      | 1000 50 420460 | 362    |      | 101000          |
| 11               | 1470451                                 | 10/22/24 STA 2                      | 9.47                    |         |      | 1000 50 420460 | 362    |      | 101000          |
| 12               | 1470455                                 | 10/18/24 STA 4                      | 80.65                   |         |      | 1000 50 420460 | 364    |      | 101000          |
| 13               | 1473799                                 | 10/28/24 STA 1                      | 184.90                  |         |      | 1000 50 420460 | 361    |      | 101000          |
| 14               | 1473799                                 | 10/29/24 STA 1                      | 50.22                   |         |      | 1000 50 420460 | 361    |      | 101000          |
| 15               | 1473810                                 | 10/28/24 STA 4                      | 24.96                   |         |      | 1000 50 420460 | 364    |      | 101000          |
| 16               | 1473810                                 | 10/29/24 STA 4                      | 50.22                   |         |      | 1000 50 420460 | 364    |      | 101000          |
| 17               | 1473816                                 | 10/29/24 STA 2                      | 39.40                   |         |      | 1000 50 420460 | 362    |      | 101000          |
| 18               | 1475009                                 | 10/31/24 STA 1                      | 43.99                   |         |      | 1000 50 420460 | 361    |      | 101000          |
| 19               | 1475013                                 | 10/31/24 STA 2                      | 43.99                   |         |      | 1000 50 420460 | 362    |      | 101000          |
| 20               | 1475014                                 | 10/31/24 STA 4                      | 43.99                   |         |      | 1000 50 420460 | 364    |      | 101000          |
| 21               | 1475015                                 | 10/31/24 STA 5                      | 43.99                   |         |      | 1000 50 420460 | 365    |      | 101000          |
| 22               | 1475017                                 | 10/31/24 STA 6                      | 43.99                   |         |      | 1000 50 420460 | 366    |      | 101000          |
|                  |   | <b>Total for Vendor:</b>            | <b>1,379.83</b>         |         |      |                |        |      |                 |
| 45778            | 82717S                                  | 1285 MOUNTAIN INK & TONER           | 55.99                   |         |      |                |        |      |                 |
| 1                | 170417                                  | 10/18/24 PRINTER INK                | 55.99                   |         |      | 1000 10 420510 | 210    |      | 101000          |
|                  |   | <b>Total for Vendor:</b>            | <b>55.99</b>            |         |      |                |        |      |                 |

11/08/24  
15:06:16

MISSOULA RURAL FIRE DISTRICT  
Claim Details  
For the Accounting Period: 10/24

Page: 11 of 16  
Report ID: AP100V

\* ... Over spent expenditure

| Claim/<br>Line # | Check<br>Invoice #/Inv Date/Description | Vendor #/Name/<br>Date/Description   | Document \$/<br>Line \$ | Disc \$ | PO # | Fund Org Acct  | Object | Proj | Cash<br>Account |
|------------------|---|--------------------------------------|-------------------------|---------|------|----------------|--------|------|-----------------|
| 45761            | -99564C                                 | 247 MOUNTAIN SUPPLY                  | 69.05                   |         |      |                |        |      |                 |
| 1                | 9584409                                 | 10/07/24 322                         | 69.05                   |         |      | 1000 20 420440 | 272    |      | 101000          |
|                  |   | <b>Total for Vendor:</b>             | <b>69.05</b>            |         |      |                |        |      |                 |
| 45790            | -99554C                                 | 259 MSUES FIRE TRAINING SCHOOL       | 95.00                   |         |      |                |        |      |                 |
| 1                | 26-237                                  | 10/30/24 PUTTKAMMER DR/OP WL         | 95.00                   |         |      | 1000 60 420462 | 380    |      | 101000          |
|                  |   | <b>Total for Vendor:</b>             | <b>95.00</b>            |         |      |                |        |      |                 |
| 45785            | 82718S                                  | 205 MT ACE HARDWARE                  | 23.29                   |         |      |                |        |      |                 |
| 1                | 238092588                               | 10/09/24 TRAINING EQUIPMENT          | 21.99                   |         |      | 1000 30 420430 | 221    |      | 101000          |
| 2                | 238114985                               | 10/28/24 STA 1                       | 1.30                    |         |      | 1000 50 420460 | 361    |      | 101000          |
|                  |   | <b>Total for Vendor:</b>             | <b>23.29</b>            |         |      |                |        |      |                 |
| 45720            | 82679S                                  | 445 MT CRIMINAL RECORDS              | 25.00                   |         |      |                |        |      |                 |
| 1                | 101524CW01                              | 10/15/24 RFF WARREN FINGERPRINTING   | 25.00                   |         |      | 1000 60 420462 | 391    |      | 101000          |
|                  |   | <b>Total for Vendor:</b>             | <b>25.00</b>            |         |      |                |        |      |                 |
| 45701            | 82661S                                  | 262 MT STATE FIRE CHIEFS ASSOCIATION | 195.00                  |         |      |                |        |      |                 |
| 1                | 100924PF01                              | 10/09/24 FINLAY FIRE CHIEF CONF      | 195.00                  |         |      | 1000 10 420510 | 380    |      | 101000          |
|                  |   | <b>Total for Vendor:</b>             | <b>195.00</b>           |         |      |                |        |      |                 |
| 45781            | 82719S                                  | 1322 MURDOCHS RANCH & HOME SUPPLY    | 120.87                  |         |      |                |        |      |                 |
| 1                | 56122377                                | 10/04/24 MULE                        | 29.99                   |         |      | 1000 20 420440 | 272    |      | 101000          |
| 2                | 54114439                                | 10/07/24 322                         | 21.98                   |         |      | 1000 20 420440 | 272    |      | 101000          |
| 3                | 56126151                                | 10/15/24 SHOP                        | 56.94                   |         |      | 1000 20 420440 | 270    |      | 101000          |
| 4                | 54117852                                | 11/16/24 SHOP                        | 11.96                   |         |      | 1000 20 420440 | 270    |      | 101000          |
|                  |   | <b>Total for Vendor:</b>             | <b>120.87</b>           |         |      |                |        |      |                 |
| 45772            | 82720S                                  | 295 NORCO                            | 744.83                  |         |      |                |        |      |                 |
| 1                | 41969675                                | 10/25/24 MEDICAL OXYGEN              | 172.59                  |         |      | 1000 80 420461 | 222    |      | 101000          |
| 2                | 42009650                                | 10/31/24 MEDICAL SUPPLIES            | 416.00                  |         |      | 1000 80 420461 | 222    |      | 101000          |
| 3                | 42025959                                | 10/31/24 CYLINDER RENTAL             | 156.24                  |         |      | 1000 80 420461 | 356    |      | 101000          |
|                  |   | <b>Total for Vendor:</b>             | <b>744.83</b>           |         |      |                |        |      |                 |

11/08/24  
15:06:16

MISSOULA RURAL FIRE DISTRICT  
Claim Details  
For the Accounting Period: 10/24

Page: 12 of 16  
Report ID: AP100V

\* ... Over spent expenditure

| Claim/<br>Line # | Check<br>Invoice #/Inv Date/Description        | Vendor #/Name/<br>Invoice #/Inv Date/Description | Document \$/<br>Line \$ | Disc \$ | PO # | Fund Org Acct  | Object | Proj | Cash<br>Account |
|------------------|--|--|-------------------------|---------|------|----------------|--------|------|-----------------|
| 45804            | 82738S   | 1686 NORTH RIDGE FIRE EQUIPMENT                  | 128.95                  |         |      |                |        |      |                 |
| 1                | 36363 10/15/24 322                             |  | 128.95                  |         |      | 1000 20 420440 | 272    |      | 101000          |
|                  |  | <b>Total for Vendor:</b>                         | <b>128.95</b>           |         |      |                |        |      |                 |
| 45699            | 82662S   | 547 NORTHWESTERN ENERGY                          | 552.44                  |         |      |                |        |      |                 |
| 1                | 10012494-6 10/01/24 STA 5                      |  | 522.61                  |         |      | 1000 10 420510 | 341    |      | 101000          |
| 2                | 10012457-3 10/01/24 OLD STA 5                  |  | 29.83                   |         |      | 1000 10 420510 | 341    |      | 101000          |
| 45740            | 82691S   | 547 NORTHWESTERN ENERGY                          | 1,920.90                |         |      |                |        |      |                 |
| 1                | 10152458-3 10/15/24 STA 4                      |  | 943.69                  |         |      | 1000 10 420510 | 341    |      | 101000          |
| 2                | 10162415-4 10/16/24 STA 6                      |  | 74.25                   |         |      | 1000 10 420510 | 341    |      | 101000          |
| 3                | 10172425-3 10/17/24 STA 1                      |  | 113.51                  |         |      | 1000 10 420510 | 341    |      | 101000          |
| 4                | 10172441-3 10/17/24 STA 1                      |  | 789.45                  |         |      | 1000 10 420510 | 341    |      | 101000          |
| 45749            | 82702S   | 547 NORTHWESTERN ENERGY                          | 44.61                   |         |      |                |        |      |                 |
| 1                | 10072485-4 10/07/24 STA 2                      |  | 44.61                   |         |      | 1000 10 420510 | 341    |      | 101000          |
|                  |  | <b>Total for Vendor:</b>                         | <b>2,517.95</b>         |         |      |                |        |      |                 |
| 45732            | 82692S   | 114 PAUL FINLAY                                  | 216.00                  |         |      |                |        |      |                 |
| 1                | 102224PF01 10/22/24 FINLAY BIG SKY EMS PER DIE |  | 216.00                  |         |      | 1000 10 420510 | 379    |      | 101000          |
|                  |  | <b>Total for Vendor:</b>                         | <b>216.00</b>           |         |      |                |        |      |                 |
| 45734            | 82693S   | 968 PHIL RICHARDS                                | 1,059.05                |         |      |                |        |      |                 |
| 1                | 100624PR01 10/06/24 RICHARDS CA WL PER DIEM    |  | 891.00                  |         |      | 1000 50 420460 | 379    |      | 101000          |
| 2                | 102124PR01 10/21/24 RICHARDS CA WL LODGING     |  | 168.05                  |         |      | 1000 50 420460 | 379    |      | 101000          |
|                  |  | <b>Total for Vendor:</b>                         | <b>1,059.05</b>         |         |      |                |        |      |                 |
| 45757            | -99565C  | 1725 PIERCE LEASING                              | 750.00                  |         |      |                |        |      |                 |
| 1                | 0063321 10/08/24 OFFICE TRAILER 10/8-11/4      |  | 750.00                  |         |      | 1000 10 420510 | 530    |      | 101000          |
|                  |  | <b>Total for Vendor:</b>                         | <b>750.00</b>           |         |      |                |        |      |                 |
| 45714            | 82680S   | 322 PITNEY BOWES                                 | 127.80                  |         |      |                |        |      |                 |
| 1                | 0012286128 10/08/24 POSTAGE INK                |  | 127.80                  |         |      | 1000 10 420510 | 311    |      | 101000          |
|                  |  | <b>Total for Vendor:</b>                         | <b>127.80</b>           |         |      |                |        |      |                 |

11/08/24  
15:06:16

MISSOULA RURAL FIRE DISTRICT  
Claim Details  
For the Accounting Period: 10/24

Page: 13 of 16  
Report ID: AP100V

\* ... Over spent expenditure

| Claim/<br>Line # | Check<br>Invoice #/Inv Date/Description | Vendor #/Name/<br>#/Inv Date/Description | Document \$/<br>Line \$ | Disc \$ | PO # | Fund Org Acct  | Object | Proj | Cash<br>Account |
|------------------|---|--|-------------------------|---------|------|----------------|--------|------|-----------------|
| 45773            | -99560C                                 | 756 POMP'S TIRE SERVICE, INC             | 1,662.08                |         |      |                |        |      |                 |
| 1                | 1850037174                              | 10/01/24 335                             | 1,419.68                |         |      | 1000 20 420440 | 233    |      | 101000          |
| 2                | 1850037361                              | 10/03/24 VAN                             | 242.40                  |         |      | 1000 20 420440 | 233    |      | 101000          |
|                  |   | <b>Total for Vendor:</b>                 | <b>1,662.08</b>         |         |      |                |        |      |                 |
| 45758            | -99552C                                 | 260 REDTAIL COMMUNICATIONS INC           | 112.00                  |         |      |                |        |      |                 |
| 1                | 1946                                    | 10/08/24 RADIO PROJECT                   | 112.00                  |         |      | 1000 50 420460 | 271    |      | 101000          |
|                  |   | <b>Total for Vendor:</b>                 | <b>112.00</b>           |         |      |                |        |      |                 |
| 45719            | 82681S                                  | 204 RON LUBKE                            | 178.00                  |         |      |                |        |      |                 |
| 1                | 101524RL01                              | 10/15/24 LUBKE NFA PER DIEM              | 178.00                  |         |      | 1000 50 420460 | 379    |      | 101000          |
| 45791            | 82733S                                  | 204 RON LUBKE                            | 29.00                   |         |      |                |        |      |                 |
| 1                | 103124RL01                              | 10/31/24 LUBKE OCT GYM REIMB             | 29.00                   |         |      | 1000 50 420460 | 132    |      | 101000          |
|                  |   | <b>Total for Vendor:</b>                 | <b>207.00</b>           |         |      |                |        |      |                 |
| 45702            | 82668S                                  | 1735 ROSENBAUER SOUTH DAKOTA, LLC        | 118,257.00              |         |      |                |        |      |                 |
| 1                | 0000204611                              | 10/09/24 WATER TENDER CHASIS             | 118,257.00              |         |      | 1000 20 420440 | 945    |      | 101000          |
|                  |   | <b>Total for Vendor:</b>                 | <b>118,257.00</b>       |         |      |                |        |      |                 |
| 45764            | -99562C                                 | 1471 SAW SHOP                            | 731.00                  |         |      |                |        |      |                 |
| 1                | 5594                                    | 10/25/24 SAWS                            | 731.00                  |         |      | 1000 50 420460 | 206    |      | 101000          |
|                  |   | <b>Total for Vendor:</b>                 | <b>731.00</b>           |         |      |                |        |      |                 |
| 45735            | 82694S                                  | 1760 SCOTT NOBLE                         | 1,059.05                |         |      |                |        |      |                 |
| 1                | 100624SNG1                              | 10/06/24 S NOBLE CA WL PER DIEM          | 891.00                  |         |      | 1000 50 420460 | 379    |      | 101000          |
| 2                | 102124SN01                              | 10/21/24 S NOBLE CA WL LODGING           | 168.05                  |         |      | 1000 50 420460 | 379    |      | 101000          |
|                  |   | <b>Total for Vendor:</b>                 | <b>1,059.05</b>         |         |      |                |        |      |                 |
| 45745            | 82703S                                  | 1920 SHAWN PUTTKAMMER                    | 1,044.00                |         |      |                |        |      |                 |
| 1                | 103124SP01                              | 10/31/24 PUTTKAMMER EMT COURSE           | 899.00                  |         |      | 1000 60 420462 | 291    |      | 101000          |
| 2                | 103124SP01                              | 10/31/24 PUTTKAMMER EMT TEXTBOOK         | 145.00                  |         |      | 1000 60 420462 | 291    |      | 101000          |
|                  |   | <b>Total for Vendor:</b>                 | <b>1,044.00</b>         |         |      |                |        |      |                 |

11/08/24  
15:06:16

MISSOULA RURAL FIRE DISTRICT  
Claim Details  
For the Accounting Period: 10/24

Page: 14 of 16  
Report ID: AP100V

\* ... Over spent expenditure

| Claim/<br>Line # | Check<br>Invoice #/Inv Date/Description | Vendor #/Name/<br>Date/Description    | Document \$/<br>Line \$ | Disc \$ | PO # | Fund Org Acct  | Object | Proj | Cash<br>Account |
|------------------|---|---------------------------------------|-------------------------|---------|------|----------------|--------|------|-----------------|
| 45787            | 82721S                                  | 360 SHIPPING DEPOT                    | 85.14                   |         |      |                |        |      |                 |
| 1                | 37533 10/11/24                          | SHIPPING                              | 17.54                   |         |      | 1000 10 420510 | 311    |      | 101000          |
| 2                | 37854 10/15/24                          | SHIPPING                              | 38.01                   |         |      | 1000 10 420510 | 311    |      | 101000          |
| 3                | 38991 10/29/24                          | SHIPPING                              | 29.59                   |         |      | 1000 10 420510 | 311    |      | 101000          |
|                  |   | <b>Total for Vendor:</b>              | <b>85.14</b>            |         |      |                |        |      |                 |
| 45759            | 82722S                                  | 1540 SNAP ON INDUSTRIAL               | 145.58                  |         |      |                |        |      |                 |
| 1                | 62833451 10/16/24                       | SMALL TOOLS                           | 145.58                  |         |      | 1000 20 420440 | 234    |      | 101000          |
|                  |   | <b>Total for Vendor:</b>              | <b>145.58</b>           |         |      |                |        |      |                 |
| 45760            | 82723S                                  | 1419 SOLESTONE REIMBURSEMENT SERVICES | 53.28                   |         |      |                |        |      |                 |
| 1                | 2151-1 10/16/24                         | MEDICAL SUPPLIES                      | 53.28                   |         |      | 1000 80 420461 | 222    |      | 101000          |
|                  |   | <b>Total for Vendor:</b>              | <b>53.28</b>            |         |      |                |        |      |                 |
| 45752            | 82704S                                  | 1863 SPRINKLER MANIAC LLC             | 75.00                   |         |      |                |        |      |                 |
| 1                | 15217 10/22/24                          | STA 2                                 | 75.00                   |         |      | 1000 50 420460 | 362    |      | 101000          |
|                  |   | <b>Total for Vendor:</b>              | <b>75.00</b>            |         |      |                |        |      |                 |
| 45777            | -99558C                                 | 463 TRI ARC, INC.                     | 34.96                   |         |      |                |        |      |                 |
| 1                | R30796 10/31/24                         | CYLINDER RENTAL                       | 34.96                   |         |      | 1000 20 420440 | 370    |      | 101000          |
|                  |   | <b>Total for Vendor:</b>              | <b>34.96</b>            |         |      |                |        |      |                 |
| 45762            | 82739S                                  | 1628 UNIVISION                        | 3,378.30                |         |      |                |        |      |                 |
| 1                | 260214 10/01/24                         | VELOCITY HOURS                        | 3,078.30                |         |      | 1000 10 420510 | 368    |      | 101000          |
| 2                | 260211 10/01/24                         | MONTHLY FLEX PLAN                     | 300.00                  |         |      | 1000 10 420510 | 368    |      | 101000          |
|                  |   | <b>Total for Vendor:</b>              | <b>3,378.30</b>         |         |      |                |        |      |                 |
| 45794            | 82734S                                  | 1873 US DIGITAL DESIGNS, INC.         | 14,359.05               |         |      |                |        |      |                 |
| 1                | 5268172371 10/21/24                     | STATION ALERTING                      | 14,359.05*              |         |      | 1000 10 420510 | 920    |      | 101000          |
|                  |   | <b>Total for Vendor:</b>              | <b>14,359.05</b>        |         |      |                |        |      |                 |
| 45742            | -99555C                                 | 408 VERIZON WIRELESS                  | 1,030.20                |         |      |                |        |      |                 |
| 1                | 9976087680 10/11/24                     | WIRELESS                              | 1,030.20                |         |      | 1000 10 420510 | 345    |      | 101000          |
|                  |   | <b>Total for Vendor:</b>              | <b>1,030.20</b>         |         |      |                |        |      |                 |

11/08/24  
15:06:16

MISSOULA RURAL FIRE DISTRICT  
Claim Details  
For the Accounting Period: 10/24

Page: 15 of 16  
Report ID: AP100V

\* ... Over spent expenditure

| Claim/<br>Line # | Check<br>Invoice #/Inv Date/Description | Vendor #/Name/<br>Date/Description  | Document \$/<br>Line \$ | Disc \$       | PO #              | Fund Org Acct       | Object    | Proj | Cash<br>Account |
|------------------|---|-------------------------------------|-------------------------|---------------|-------------------|---------------------|-----------|------|-----------------|
| 45782            | 82724S                                  | 1724 WEX BANK                       | 6,918.86                |               |                   |                     |           |      |                 |
| 1                | 100783532                               | 10/31/24 FUEL                       | 6,918.86                |               |                   | 1000 20 420440      | 231       |      | 101000          |
|                  |   | <b>Total for Vendor:</b>            | <b>6,918.86</b>         |               |                   |                     |           |      |                 |
| 45737            | 82695S                                  | 1926 WIL AITCHISON                  | 1,059.05                |               |                   |                     |           |      |                 |
| 1                | 100624WA01                              | 10/06/24 AITCHISON CA WL PER DIEM   | 891.00                  |               |                   | 1000 50 420460      | 379       |      | 101000          |
| 2                | 102124WA01                              | 10/21/24 AITCHISON CA WL LODGING    | 168.05                  |               |                   | 1000 50 420460      | 379       |      | 101000          |
|                  |   | <b>Total for Vendor:</b>            | <b>1,059.05</b>         |               |                   |                     |           |      |                 |
| 45698            | 82663S                                  | 1818 ZANON FULBRIGHT                | 175.00                  |               |                   |                     |           |      |                 |
| 1                | 100324ZF01                              | 10/03/24 FULBRIGHT PARA TEST APPLIC | 175.00                  |               |                   | 1000 50 420460      | 380       |      | 101000          |
| 45712            | 82682S                                  | 1818 ZANON FULBRIGHT                | 75.00                   |               |                   |                     |           |      |                 |
| 1                | 100924ZF01                              | 10/09/24 FULBRIGHT PARA LICENSE FEE | 75.00                   |               |                   | 1000 50 420460      | 380       |      | 101000          |
|                  |   | <b>Total for Vendor:</b>            | <b>250.00</b>           |               |                   |                     |           |      |                 |
|                  |   | <b># of Claims</b>                  | <b>85</b>               | <b>Total:</b> | <b>299,925.83</b> | <b># of Vendors</b> | <b>57</b> |      |                 |
|                  |   | <b>Total Electronic Claims</b>      | <b>8,486.38</b>         |               |                   |                     |           |      |                 |
|                  |   | <b>Total Non-Electronic Claims</b>  | <b>291439.45</b>        |               |                   |                     |           |      |                 |

11/08/24  
15:06:16

MISSOULA RURAL FIRE DISTRICT  
Fund Summary for Claims  
For the Accounting Period: 10/24

Page: 16 of 16  
Report ID: AP110

---

| Fund/Account                              | Amount            |
|---|-------------------|
| 1000 GENERAL FUND                         |                   |
| 101000 CASH ON DEPOSIT - COUNTY TREASURER | 299,925.83        |
| <b>Total:</b>                             | <b>299,925.83</b> |

---

Claims reviewed and approved for payment at the Regular scheduled Missoula Rural Fire District Board of Trustee Meeting held Tuesday, November 12, 2024, at 4:00 PM.

  
\_\_\_\_\_ Melissa Schnee, Finance/HR Director

  
\_\_\_\_\_ Ben Murphy, Chairman

  
\_\_\_\_\_ Dick Mangan, Secretary



# MISSOULA RURAL FIRE DISTRICT

Good afternoon, Commissioners.

For the record, my name is Paul Finlay, Chief of the Missoula Rural Fire District. I am coming before you today to provide comments and ongoing concerns regarding the Grant Creek Crossing TEDD. The Missoula Rural Fire District administration, in conjunction with multiple Missoula County administrators, has spent an incredible amount of time over the last multiple months in an effort to understand, plan for, and attempt to forecast issues that may come from a 30-year relationship with the proposed Grant Creek Crossing TEDD.

Our concerns are many, with a few focused on increasing demand for the Fire District while our dollars to operate are impacted negatively with the addition of TIFFs. As a side note, the proposed Grant Creek Crossing could become the 6<sup>th</sup> TEDD within the Missoula Rural Fire District. Out of hundreds of hours spent, including asking questions and explaining concerns, the outcome of the questions remains in a circular pattern. Ultimately, how is the Fire District impacted? Why do the theoretical calculations of fiscal impact not support the actual documented losses to the Fire District? Are the benefits of the TEDD weighed against the impacts to the Fire District spanning a 30-year relationship? These are just a few remaining questions that continue to be researched for further understanding.

In the interim, and until the questions and concerns are answered and understood by the Fire District and the County, I would ask that the approval be delayed, and additional time and resources be committed to a comprehensive understanding of financial, workload, and future concerns related to the Grant Creek Crossing TEDD. As the Fire District responsible for the fire and life safety of the area, we are committed and will continue to commit personnel and resources to ensure the sustainability of the Fire District and, most importantly, the people that we serve in our community.

Thank you.

Paul Finlay  
Fire Chief



# MISSOULA RURAL FIRE DISTRICT

## Montana VEBA HRA Annual Renewal Group Ballot Results

|                                       |   |
|---------------------------------------|---|
| <b>Agency/Public Entity</b>           | Missoula Rural Fire District                    |
| <b>Group Number &amp; Description</b> | MRFD Employee Group                             |
| <b>Union/Non-Union/Blend</b>          | Blended <input type="button" value="v"/>        |
| <b>Eligibility</b>                    | Any Separation <input type="button" value="v"/> |
| <b>Effective Date</b>                 | 11/15/24  |

|  |   |
|--|---|
| <b>Number of Ballots Sent</b>              | 8 |
| <b>Number of Ballots Returned</b>          | 6 |
| <i>Number of Yes, Continue the Same</i>    | 0 |
| <i>Number of Yes, Continue with Change</i> | 0 |
| <i>Number of No, Disband Group</i>         | 6 |
| <b>Number of Ballots NOT Returned</b>      | 2 |

### FINAL RESULT (select one)

**Yes, the VEBA HRA group will be continue with a contribution of Select One**  
 This group will be eligible to conduct a new vote 30 days prior to the expiration date.

**Expiration Date:**  
**Eligible Vote Date:**

**Yes, the VEBA HRA group will continue with a **change of contribution to** Select One**  
 This group will be eligible to conduct a new vote 30 days prior to the expiration date.

**Expiration Date:**  
**Eligible Vote Date:**

**No, the VEBA HRA group will not continue and will be disbanded.**  
**Disband Effective Date:** 11/15/24

## Jenn Culp

---

**From:** Pete Giardino  
**Sent:** Friday, October 4, 2024 3:03 PM  
**To:** Suppression; Residents; Volunteers; Admin; Staff  
**Subject:** Structure Fire - 2222 Woodlawn Avenue

**Follow Up Flag:** Follow up  
**Flag Status:** Completed

All,

I spoke with the homeowner about the fire at 2222 Woodlawn Avenue yesterday. My intent was to see if there was anything MRFD could do for their family in the wake of that structure fire. Instead, the homeowner told me a story about what they observed the morning of that event.

When their granddaughter was in first grade, she drew a picture that won an award at school that was placed in a silent auction. That picture was bought by the homeowners and hung on the wall in the small hallway that led to the primary bedroom. During salvage operations, the homeowner's witnessed one of our firefighters carrying that picture to the garage for safety. They were very impressed with our professionalism and caring in that moment. When the homeowners told their granddaughter this story, she was elated to the point of tears.

Never forget how the smallest of things can have the greatest effect on the customers we proudly serve. Station 1 should expect a visitor very soon.

Thank you for all you do and for the assistance with the investigation, you are all appreciated beyond words.



### Peter V Giardino

Deputy Fire Marshal, Missoula Rural Fire District

📞 (406) 239-4844

✉️ [pgiardino@mrfdfire.org](mailto:pgiardino@mrfdfire.org)

🌐 [www.MRFDfire.org](http://www.MRFDfire.org)

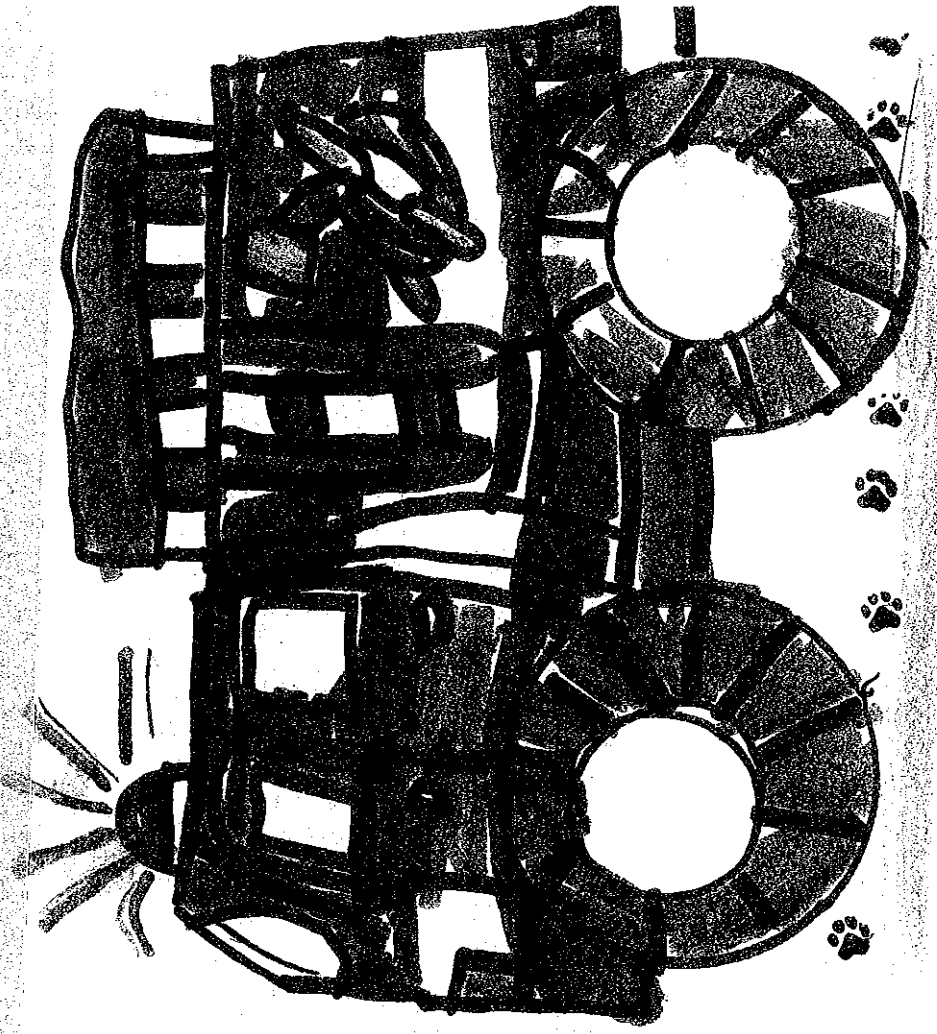
📍 [2521 South Avenue West, Missoula MT 59804](https://www.google.com/maps/place/2521+South+Avenue+West,+Missoula,+MT+59804)



====Public Records/Confidentiality Notice==== Missoula Rural Fire District ("MRFD") messages and attachments (if any) sent to or from this e-mail account may be considered public records depending on the content. MRFD is statutorily required to provide copies of public records to individuals requesting them unless the information is confidential or protected from disclosure by law. This message is intended for the use of the individual or entity named above. Any use, dissemination, disclosure or reproduction of this e-mail other than by the intended recipient is strictly prohibited. If you

Thank You!!!

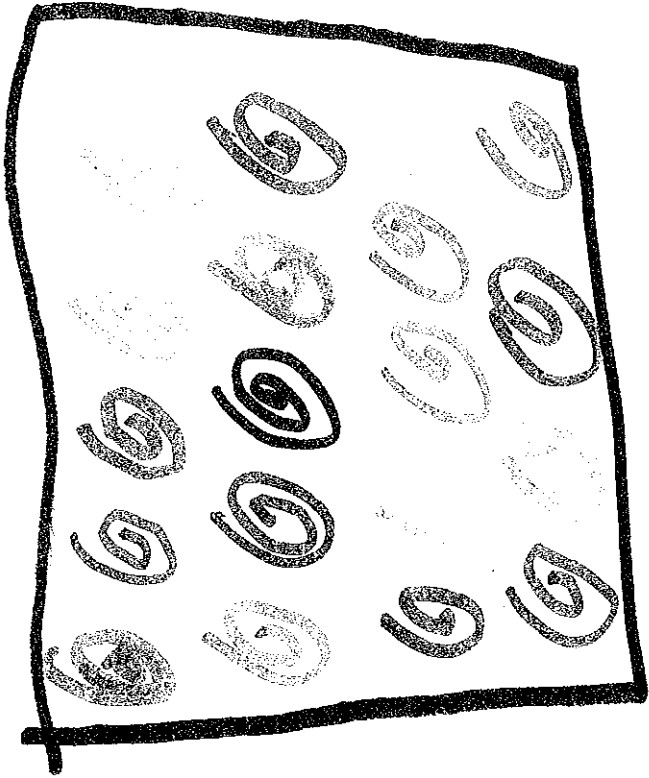
Judy  
Tehie/©



For saving the  
world in my

Hamma in Hampa

Love, Tenney  
Arnott



Did it work?

HAPPY HALLOWEEN  
firefighters

LOVE-FESTIVE

I thought I'd brighten

your HALLOWEEN

with a smile!



Return to: City Clerk  
City of Missoula  
435 Ryman Street  
Missoula MT 59802-4297

## RESOLUTION NUMBER 8815

**A resolution to annex and incorporate within the boundaries of the City of Missoula five existing tracts of record and adjacent right-of-way that can be referenced in Book 810 of Micro Records Pages 1424-1428 and all located in Sections 5 and 8, Township 12 North, Range 19 West and, P.M.M, as shown and legally described in Exhibits A and B, and zone the property R5.4 Residential, based on the findings of fact in the staff report, subject to the recommended conditions of annexation approval.**

**WHEREAS**, Hillview Road LLC and Hillview MF Project Owner LLC, owners of 100% of the property described herein, have filed Petition No. 10209 with the City Clerk requesting annexation and waiving the need to prepare a service plan for the annexation; and

**WHEREAS**, it is the Missoula City Council's decision to consider this petition for annexation pursuant to the statutory annexation by petition method set forth in Title 7 Chapter 2 Part 46 Section 4601 (3)(a)(ii) Montana Code Annotated (MCA); and

**WHEREAS**, the herein described property is within the City of Missoula Utility Service Area boundary, the City has current and future capacity to serve the property and development, and the owners/developers will pay all costs to extend the municipal sewer and water service to the property; and

**WHEREAS**, the City Council desires the annexation and zoning of the herein described property be conditioned upon annexation subject to the following conditions:

### Phasing

1. Final plat submittals shall be made in accordance with the Phasing Plan, unless the timeframes are extended or the phasing plan is amended as per City Subdivision Regulations Section 4-070.3.C. The Phasing Plan includes deadlines for submittal of each final plat phase. *(City Subdivision Regulations Section 4-070.2 and 4-070.3.C)*

### Streets, General

2. All street and sidewalk improvements shall be designed in accordance with the Missoula City Public Works Standards and Specifications Manual and the City of Missoula Subdivision Regulations (except as modified by variance), and comply with Public Rights-of-Way Accessibility Guideline requirements, subject to the review and approval by Public Works & Mobility. Improvements shall be installed or secured with an improvement agreement prior to final plat approval of each appurtenant phase. *(City Subdivision Regulations Section 3-020.2)*
3. The subdivider shall provide a road naming plan for review and approval of Missoula City GIS and City Public Works & Mobility prior to final plat approval of Phase 1. The plan shall include a name for the alleys providing vehicular access to lots. The subdivider shall install or secure

with an improvements agreement the approved road name signs appurtenant to each phase prior to final plat approval of each phase. (*City Subdivision Regulations Section 3-020.4.H and 3-020.12*)

4. The subdivider shall provide a street signage plan in accordance with the Manual on Uniform Traffic Control Devices subject to review and approval of Public Works & Mobility and Missoula Fire prior to final plat approval of each phase. The subdivider shall install or secure with an improvement agreement the approved street signage appurtenant to each phase prior to final plat approval of each phase. (*City Subdivision Regulations Section 3-020.4.H*)

#### Hillview Way Offsite Improvements

5. The subdivider shall design and provide preliminary construction drawings for the future Hillview Way and Rimel Road roundabout to the City of Missoula, subject to review and approval of Public Works & Mobility, prior to final plat approval of Phase 2. (*City Subdivision Regulations Section 3-020.4.B*)

#### Onsite Streets and Alleys

6. The subdivider shall provide plans for and install or secure within an improvement agreement all streets and alleys within each phase as shown on the preliminary plat, phasing plan, and road plans submitted with the preliminary plat application, subject to review and approval of Public Works & Mobility prior to final plat approval of each appurtenant phase. (*City Subdivision Regulations Sections 3-010.5, 3-020.3.B, and 3-020.4.A*)
7. The subdivider shall provide plans for and install or secure within an improvement agreement all non-motorized facilities within each phase as shown on the preliminary plat, phasing plan, and road and trail plans submitted with the preliminary plat application, subject to review and approval of Public Works & Mobility and Parks & Recreation, prior to final plat approval of each appurtenant phase, subject to review and approval of Parks and Recreation. (*City Subdivision Regulations Sections 3-010.5, 3-020.3.B, and 3-020.4.A*)
8. The subdivider shall provide a maintenance agreement for the hammerhead turnaround at "Local I", subject to review and approval of Public Works & Mobility, prior to final plat approval of Phase 5. (*City Subdivision Regulations Sections 3-020.3.B*)

#### Rights-of-Way and Easements

9. The subdivider shall dedicate a 10-foot right-of-way easement to the City of Missoula adjacent to Hillview Way, subject to review and approval of the City Attorney and Public Works & Mobility, prior to final plat approval of Phase 1. (*City Subdivision Regulations Section 3-020.3.B and 3-060.1*)
10. The subdivider shall dedicate right-of-way easement for the future Hillview Rimel roundabout, as shown on the Preliminary Plat, to the City of Missoula, subject to review and approval of the City Attorney and Public Works & Mobility, prior to final plat approval of Phase 1. (*City Subdivision Regulations Section 3-020.3.B and 3-060.1*)
11. The subdivider shall establish and dedicate right-of-way easements to the City of Missoula from Hillview Way to edge of property for Rimel Road, subject to review and approval of the City Attorney and Public Works & Mobility, prior to final plat approval of Phase 1. (*City Subdivision Regulations Section 3-020.3.B and 3-060.1*)
12. All proposed rights-of-way and easements shall be shown on each appurtenant final plat, identified for their width and purpose, dedicated to the City of Missoula, and recorded with the County Clerk & Recorder's Office with book and page of the recorded documents provided in accordance with Public Works Standards and Specifications Manual, subject to review and approval by Public Works & Mobility, prior to final plat approval of each phase. In addition to

those easements shown on the Preliminary Plat, additional drainage and utility easements along the lot line of Lots 83 and 84, and through Common Area Lot 10 and Park Lot 2 shall be shown on each appurtenant final plat. (*City Subdivision Regulations Sections 3-020.3.B, 3-040.2.B, 3-040.3.H & 3-060.1*)

13. The subdivider shall provide a "municipal utility easement" in Common Area Lot 5 as shown on the Preliminary Plat, subject to review and approval of Public Works & Mobility, prior to final plat approval of Phase 3. (*City Subdivision Regulations Section 3-020.3.B and 3-060.1*)
14. The subdivider shall provide a "right-of-way and public utility easement" in Common Area Lot 23 as shown on the Preliminary Plat, subject to review and approval of Public Works & Mobility, prior to final plat approval of Phase 6. (*City Subdivision Regulations Section 3-020.3.B and 3-060.1*)
15. The subdivider shall provide a "right-of-way and public utility easement" in Common Area Lot 24 as shown on the Preliminary Plat, subject to review and approval of Public Works & Mobility, prior to final plat approval of Phase 6. (*City Subdivision Regulations Section 3-020.3.B and 3-060.1*)
16. The subdivider shall provide a "municipal utility easement" in Park Lot 2 as shown on the Preliminary Plat, subject to review and approval of Public Works & Mobility, prior to final plat approval of Phase 1. (*City Subdivision Regulations Section 3-020.3.B and 3-060.1*)
17. The following statement shall appear on the face of the final plat, in the Development Covenants, and on each instrument of conveyance, subject to review and approval by Public Works & Mobility and Community Planning, Development & Innovation, prior to final plat approval: "All owners of Wildroot Subdivision Lots not included in Special Improvement District ("SID") 549 along Hillview Way, Rimel Road, and all other internal local streets within the subdivision shall waive the right to protest being included in SID 549 and further agree to pay the impact fee as described in Chapter 15.68 Hillview Way Special Improvement District No. 549 Impact Fee whether or not the parent parcel of land prior to the subdivision was included in SID 549. The impact fee payments shall be based on the requirements as described in the Special Improvement Agreement recorded as document #201504924 in Book 942, Page 7 in the records of Missoula County." (*Montana Code Annotated Section 76-3-510, City Subdivision Regulations Section 9-020.1, City Resolution No. 7911*)
18. The subdivider shall provide a supplemental sheet to each final plat overlaying the Special Improvement District 549 boundary and highlighting the lots outside of the SID 549 boundary which are to pay the impact fee at building permit. (*Montana Code Annotated Section 76-3-510, City Subdivision Regulations Section 9-020.1, City Resolution No. 7911*)
19. The subdivider shall include the following statement on the face of each final plat, subject to review and approval by Public Works & Mobility: "The undersigned hereby grants unto each and every person, firm, or corporation, whether public or private, providing or offering to provide internet, telephone, electric power, gas, cable television, water, or sewer service to the public, the right to the joint use of an easement for the construction, maintenance, repair, and removal of their lines and other facilities, in over, under, and across each area designated on this plat as "Utility Easement" to have and to hold forever." (*City Subdivision Regulations Section 5-050.3.X*)

#### Stormwater and Drainage

20. The subdivider shall submit complete grading and drainage plans showing proposed grades of streets, proposed drainage facilities, and a stormwater pollution prevention plan for all lots, blocks and other areas meeting Montana Department of Environmental Quality standards, subject to the review and approval of Public Works & Mobility, prior to final plat approval of

each phase. All drainage facilities shall be constructed, or secured in an improvement agreement, in accordance with the approved plans prior to final plat approval of each appurtenant phase. (*City Subdivision Regulations Section 5-020.11*)

21. The subdivider shall place the following statement into the convenience language. "Each single-family lot should have a way to convey stormwater to the ROW without discharging across multiple properties unless a drainage easement is provided across downhill lots. Areas with finish grade >8% within 15-ft of rear property lines will need to have a drainage easement and swale constructed at the property line (convenience portion)." (*City Subdivision Regulations Section 3-010.1 B and 3-010.2 and 5, 3-040.3*)
22. The subdivider shall Provide, install and provide vehicular access to all stormwater facilities outside of the rights-of-way prior to final plat approval of each appurtenant phase. (*City Subdivision Regulations 3-010.2 and 5, 3-040.3*)
23. The subdivider shall place the following statement into the convenience language. "Stormwater facilities outside of the public right-of-way shall be maintained by HOA." (*City Subdivision Regulations 3-010.2 and 3-040.3*)
24. The subdivider shall place the following statement into the convenience language. "Areas with offsite or uphill overland flow will need to provide a drainage easement across the lot. This can be defined during each phase." (*City Subdivision Regulations 3-010.2 and 4, 3-040.3*)
25. The subdivider shall design and install, or secure in an improvement agreement, additional emergency overflow provisions from the intermediate stormwater pond to the Hillview ROW, subject to review and approval of Public Works & Mobility, prior to final plat approval of Phase 3. (*City Subdivision Regulations 3.010.2 and 4 and 3-040.3*)

#### Riparian Resource Area

26. The subdivider shall submit a Riparian Resource Management Plan addressing the requirements in City Subdivision Regulations Sections 3-130.3 and 5-020.14.L, subject to review and approval of Community Planning, Development & Innovation prior to final plat approval of Phase 1. The final approved plan shall be appended to the Development Covenants and referenced during subdivision and park improvement design and construction. (*City Subdivision Regulations Sections 3-130.3 and 5-020.14.L*)

#### Water Systems, Sewer Systems, and Solid Waste Disposal

27. The subdivider shall submit plans for water supply and sewage disposal facilities meeting the requirements of the Montana Department of Environmental Quality, Missoula City/County Health Department, and City of Missoula, prior to final plat approval of each phase. The subdivider shall install or secure with an improvement agreement the approved facilities prior to final plat approval of each phase, subject to review and approval of Public Works & Mobility. (*City Subdivision Regulations Section 3-070.1*)
28. The subdivider shall submit plans for booster pump stations, pressure reducing vaults, and water tank for review and approval by Public Works & Mobility prior to final plat approval of Phase 3. The review and approval shall include, but not be limited to, sizing of facilities, site design and landscaping, security systems, SCADA systems, noise mitigation from pump stations, standby power generation and system appurtenances. Final sizing of tank and pumping facilities to be determined by Public Works & Mobility. (*City Subdivision Regulations Section 3.070.1*)
29. The subdivider shall submit solid waste disposal plans meeting the regulations of Montana Department of Environmental Quality, Missoula City/County Health Department, and the City

of Missoula, subject to the review and approval of Public Works & Mobility prior to final plat approval of Phase 1. (*City Subdivision Regulations Section 3-070.1*)

30. The subdivider shall provide easements and vehicular access to wastewater facilities outside of the public right-of-way. Reviewed and approved per Public Works & Mobility. (*City Subdivision Regulations 3.020.3 and 3-070.6*)
31. The following statement shall be placed on each final plat and added to the Development Covenants: "The wastewater system has been designed to gravity feed from each lot. In special cases homeowners must receive written approval from Public Works & Mobility for any external pumped effluent system." (*City Subdivision Regulations Section 3-070.1*)
32. The subdivider shall abandon the existing water services located in Common Area Lot 5 unless metered and used for irrigation, prior to Phase 3 Final Plat. (*City Subdivision Regulations Section 3.070.1*)
33. Irrigation design flows for Common Areas within a subdivision phase must be submitted prior to City approval of Released for Construction plans of that same phase. The irrigation design flow reported to the City should include cumulative irrigation demand of the current and previously approved phases. The Homeowner's Association shall be required to modify irrigation zone flows and schedules as necessary so the water system pumping capacity is not exceeded. (*City Subdivision Regulations Section 5-020.11*)

#### Fire Protection

34. The subdivider shall provide plans for fire suppression water flow and duration, hydrant placement, and address signage standards, subject to review and approval by Missoula Fire and Public Works & Mobility, prior to final plat approval of Phase 1. The subdivider shall install fire hydrants and related improvements, subject to review and approval by Missoula Fire and Public Works & Mobility, prior to combustible construction in each appurtenant phase. (*City Subdivision Regulations Section 3-010.1.F and 3-070.1*)

#### Mail Delivery

35. The subdivider shall provide plans for and install or secure an improvement agreement for mail delivery facilities for future subdivision residents, subject to review and approval by the U.S. Postal Service and Public Works & Mobility, prior to final plat approval of Phase 1. The subdivider shall install or secure with an improvement agreement the approved mail delivery facilities prior to final plat approval of each appurtenant phase, subject to review and approval of Public Works & Mobility. (*City Subdivision Regulations Sections 3-020.15.D(2)(c) and 3-100.18*)

#### Parkland Dedication, Boulevard Landscaping & Weeds

36. The following statement shall appear on the face of each final plat, in the Development Covenants, and on each instrument of conveyance, subject to review and approval by City Parks & Recreation and Community Planning, Development & Innovation: "Acceptance of a deed for a lot within this subdivision shall constitute the assent of the owners to any future park improvement district, based on benefit, for future improvements and maintenance of parks within and adjacent to the Wildroot Subdivision, including but not limited to lighting, watering, drainage, planting, transportation, play equipment, exercise equipment, garbage facilities, signage, and maintenance, and may be used in lieu of their signatures on an improvement district petition." (*City Subdivision Regulations Sections 5-050.3.AA, 3-080.8.C, 4-010.13.B(c) and (g)*)
37. The subdivider shall provide plans for boulevard landscaping for all roads within and adjacent to development lots, subject to review and approval by Parks and Recreation, prior to final

plat approval for each phase. While tree locations may change slightly in final design, the total number of trees shown within the Right-of-Ways shall remain the same. Class II street trees shall be planted at a linear spacing between 25 and 35 feet, with a minimum of one tree per lot (*City Subdivision Regulations Section 5-050.5.C*).

38. The subdivider shall amend the Development Covenants to state: "Initial lot purchaser shall be responsible for obtaining a boulevard landscaping permit prior to building permit approval and for installation of boulevard landscaping adjacent to development lots prior to certificate of occupancy. Class II trees selected from the City of Missoula approved street tree list shall be planted on all street frontages at a 25-35' typical spacing", prior to Phase 1 final plat approval subject to review and approval by City Parks and Recreation (*City Subdivision Regulations Section 5-050.5.C*).
39. The subdivider shall enter into a Development Agreement with Missoula Parks and Recreation to establish expectations and timing of City Parkland improvements, as included in the Phasing Plan, prior to Phase 1 final plat approval. (*City Subdivision Regulations Sections 4-070.3.C(3)*)
40. The subdivider shall provide plans for and installation of park improvements to all City Parkland and common area used to meet parkland dedication requirements, including but not limited to: grading, application of topsoil, installation of commercial grade irrigation system, installation of turf grass and dryland seed or sod, installation of park trees, and installation of trails, subject to review and approval by Parks and Recreation, prior to final plat approval for each phase containing parcels zoned Open Space. Topsoil shall be approved by Parks and Recreation and shall have a minimum depth of 10 inches in irrigated areas. Vegetation in Parkland must be sufficiently established and accepted by Parks and Recreation before Improvements Agreement can be released (*City Subdivision Regulations Section 5-020.14.H*).
41. The subdivider shall show a 10' wide Public Access Easement along all trails within common area lots, centered on the constructed trails, on the final plat of each phase. (*City Subdivision Regulations Section 3-020.15.F.5*)
42. The subdivider shall provide maintenance plans for common areas and mutually controlled facilities per Section 5-020.14. K.10 of the City Subdivision Regulations, subject to review and approval by CPDI and Parks and Recreation, prior to final plat approval of Phase 1. (*City Subdivision Regulations Section 5-020.14.K.10*)
43. The subdivider shall provide a Weed Management and Revegetation Plan, appended to the Development Covenants and approved by the Missoula County Weed District, subject to review and approval by Community Planning, Development & Innovation, prior to final plat approval. (*City Subdivision Regulations Section 5-010.14.K*)

#### Development Covenants

224

44. The subdivider shall submit final Development Covenants meeting the requirements of City Subdivision Regulations Section 5-020.14.K, subject to review and approval by Community Planning, Development & Innovation, prior to final plat approval of Phase 1. (*City Subdivision Regulations Section 5-010.14.K*)
45. The first purchaser of each lot in this subdivision that obtains a building permit for a structure on the lot, which shall include builders not intending to occupy the structure, is responsible for establishing boulevards and planting public street trees during the first growing season prior to Certificate of Occupancy. This responsibility shall transfer to any subsequent purchaser until the boulevards and street trees are established. Boulevards are any public rights-of-way or easements between the curb or edge of asphalt and the lot line, property line or edge of

easement. Boulevards shall be established per the Public Works Standards and Specifications Manual including but not limited to six inches (6") of topsoil that meets the specifications found in the manual, turfgrass and may include other live plantings. Street trees are required to be installed in accordance with the subdivision's approved boulevard landscaping plan and the City of Missoula Parks and Recreation Design Manual. Temporary Certificate of Occupancy will be granted and held in place for occupancy occurring after the growing season and until boulevard and tree establishment has been approved by Urban Forestry. Once the boulevard and tree establishment has occurred, the adjacent property owner is responsible for ongoing watering/irrigation of all boulevard landscaping and street trees. This covenant may not be changed or terminated without the consent of Missoula City Council. *(City Subdivision Regulations Section 3-020.15.D)*

46. The subdivider shall include the following sections in the Development Covenants, subject to review and approval by Public Works & Mobility and Community Planning, Development & Innovation, prior to final plat approval: maintenance and replacement of mail delivery facilities, address signage standards, easements remaining unobstructed, wood burning devices, weed control, MTFWP "Living With Wildlife" recommendations, radon mitigation, riparian resource management plan, SID/RSID/SLD, and wildland urban interface fire protection standards, and said sections may not be amended or deleted without written approval by the governing body, prior to final plat approval of Phase 1. *(City Subdivision Regulations Sections 5-010.14.K, 5-020.14.F & 3-010.2)*
47. The subdivider shall include language in the Development Covenants prohibiting obstructions to be placed within any proposed public access or pedestrian access easements and any dedicated parkland, or any obstructions aside from fences in proposed utility easements, so as to maintain sufficient perpetual legal access, subject to review and approval by Public Works & Mobility and Community Planning, Development & Innovation, prior to final plat approval of Phase 1. *(City Subdivision Regulations Section 5-020.5)*
48. The subdivider shall include language in the Development Covenants that maintenance of all formal Common Areas not considered dedicated Parkland be performed by a Homeowners Association (HOA), so as to ensure quality open space, subject to review and approval by Community Planning, Development & Innovation, prior to final plat approval of Phase 1. *(City Subdivision Regulations Section 3-100.14)*
49. Prior to final plat approval of Phase 3, the subdivider shall install a barricade limiting access to Rimel Road east of the subject property, until future connections may be determined necessary, subject to review and approval by Public Works & Mobility. The subdivider shall also mitigate impacts to the driveway approach serving the neighboring property to the south to Rimel Road, subject to review by Public Works & Mobility prior to the final plat approval of Phase 3. *(City Subdivision Regulations Section 3-010.1.B and 3-020.4.L)*
50. The subdivider shall include a one-foot no access strip along the property lines of all lots adjacent to Rimel Road, subject to approval by Public Works & Mobility, prior to final plat approval of each applicable phase. *(City Subdivision Regulations Section 3-030-1.E and 3-020.3.H.1)*

**WHEREAS**, Section 7-2-4211 MCA requires municipalities to include the full width of any public street or road rights-of-way that are adjacent to the property being annexed; and

**WHEREAS**, a portion of the right-of-way for Rimel Road is adjacent to the subject property and is not within the municipal boundary of the City of Missoula, therefore the City has included the full width of the adjacent Rimel Road right-of-way in the annexation boundary; and

**WHEREAS**, the parcels described herein are currently within the Residential Medium land use designation of the Our Missoula 2035 Growth Policy, which is the applicable regional plan. The recommended zoning in the City is R5.4 Residential and in accordance with MCA 76-2-303(3)(a) and Missoula Municipal Code criterion 20.85.040(l)(2), it is the intention of the City of Missoula to annex this property with the recommended City zoning. **FURTHER**, the parcels are situated in the vicinity of City Council Ward No. 4 and the Moose Can Gully Neighborhood Council District, and it is the intention of the Council to add these parcels to said Ward and Neighborhood Council District; and

**WHEREAS**, in the judgment of the City Council of the City of Missoula, it is deemed to be in the best interest of the City of Missoula, the inhabitants thereof and the current and future inhabitants of the tracts and parcels of land described herein, which have petitioned for annexation and are within the urban growth boundary, that the boundaries of the City of Missoula shall be extended to include the same within the corporate limits.

**NOW THEREFORE BE IT RESOLVED** that the City Council of the City of Missoula hereby incorporates and annexes into the City's jurisdictional boundary the herein described property, applies city zoning as stated within, and assigns the property to the said Ward and Neighborhood Council District; and

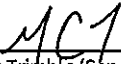
**BE IT FURTHER RESOLVED** that the City did, pursuant to Section 76-2-303 and 7-1-4127 MCA, publish in the Missoulian, a newspaper of general circulation in the City of Missoula, which newspaper is nearest to the said land being considered for annexation, at least once a week for two successive weeks on July 27, 2024 and August 3, 2024, a notice of the public hearing date and that a resolution of intention did appear on the City Council agenda for the meeting scheduled on August 19, 2024, and that the City will accept expressions of approval or disapproval in writing of this proposed alteration of the boundaries of the city and zoning until the close of the City Council public hearing on September 9, 2024, which is scheduled to occur at 6:00 p.m. at the regularly scheduled City Council meeting with final consideration on the resolution following the City Council public hearing on September 9, 2024; and


**BE IT FURTHER RESOLVED** that if the city annexation of any lot(s), parcel(s), block(s) or tract(s) of land annexed into the city pursuant to this city annexation resolution or any provision of this resolution is ever held to be invalid or unconstitutional, the City Council hereby declares that any such decision shall not affect the validity of the annexation of the remaining lot(s), parcel(s), block(s) or tract(s) of land annexed into the city or the remaining provisions of this resolution. The City Council hereby declares that it would have passed this resolution and annexed each lot(s), parcel(s), block(s) or tracts(s) of land into the city as well as each provision of this resolution irrespective of the fact that the annexation of any one or more lot(s), parcel(s), block(s) or tract(s) of land annexed into the city or provision of this resolution may have been declared invalid or unconstitutional, and if for any reason the annexation of any lot(s), parcel(s), block(s), tract(s) of land or any provision of this resolution should be declared invalid or unconstitutional, then the annexation of the remaining lot(s), parcel(s), block(s) or tracts(s) of land and resolution provisions are intended to be and shall be in full force and effect as enacted by the City Council.

PASSED AND ADOPTED this 9<sup>th</sup> day of September, 2024.

**ATTEST:**

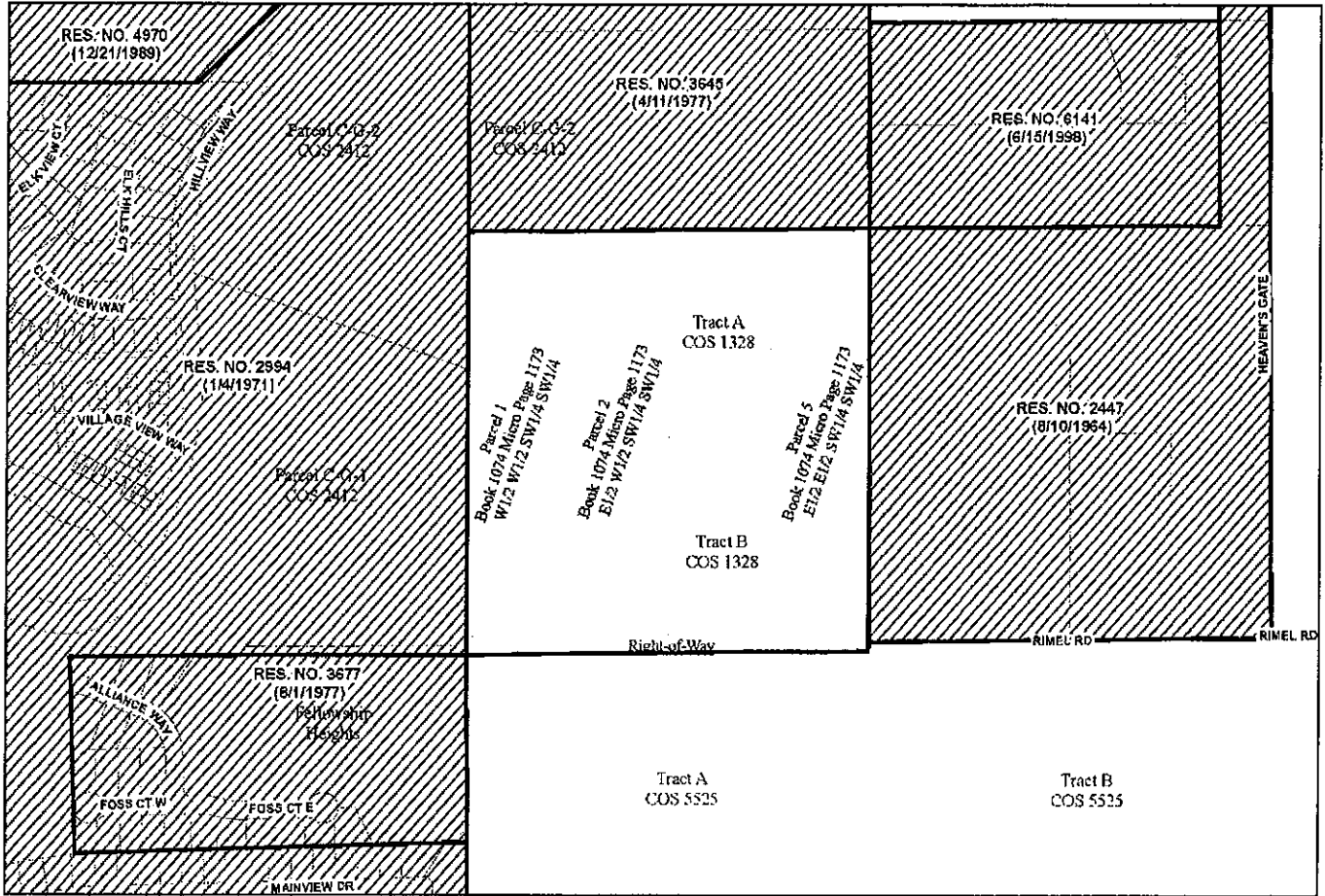
**APPROVED:**

  
\_\_\_\_\_  
Claire Trimble (Sep 13, 2024 13:56 MDT)  
Claire Trimble  
City Clerk

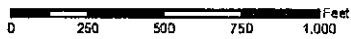
  
\_\_\_\_\_  
Andrea Davis (Sep 12, 2024 09:10 MDT)  
Andrea Davis  
Mayor



**EXHIBIT A: ANNEXATON MAP**



**Exhibit 'A'**



**Tract A and Tract B Certificate of Survey 1328,  
 Parcels 1, 2 & 5 of Page 1173 of Micro Book 1074  
 & Adjacent Right-of-Way**

All Located in Sections 5 & 8, T.12 N., R. 19 W., P.M.M.

Prepared by CITY OF WASHINGTON SERVICES

**Legend**

- Parcel Boundaries
- Proposed Annexation
- Annexation Resolutions
- City Limits

## **EXHIBIT B: LEGAL DESCRIPTION**

PARCEL 1:  $W\frac{1}{2}W\frac{1}{2}SW\frac{1}{4}SW\frac{1}{4}$  OF SECTION 5, TOWNSHIP 12 NORTH, RANGE 19 WEST, P.M.M., MISSOULA COUNTY, MONTANA - RECORDING REFERENCE: BOOK 810 OF MICRO RECORDS AT PAGE 1424

PARCEL 2:  $E\frac{1}{2}W\frac{1}{2}SW\frac{1}{4}SW\frac{1}{4}$  OF SECTION 5, TOWNSHIP 12 NORTH, RANGE 19 WEST, P.M.M., MISSOULA COUNTY, MONTANA - RECORDING REFERENCE: BOOK 810 OF MICRO RECORDS AT PAGE 1425

PARCEL 3: A TRACT OF LAND LOCATED IN THE  $W\frac{1}{2}E\frac{1}{2}SW\frac{1}{4}SW\frac{1}{4}$  OF SECTION 5, TOWNSHIP 12 NORTH, RANGE 19 WEST, P.M.M., MISSOULA COUNTY, MONTANA, BEING MORE PARTICULARLY DESCRIBED AS TRACT A OF CERTIFICATE OF SURVEY NO. 1328. - RECORDING REFERENCE: BOOK 810 OF MICRO RECORDS AT PAGE 1426

PARCEL 4: A TRACT OF LAND LOCATED IN THE  $W\frac{1}{2}E\frac{1}{2}SW\frac{1}{4}SW\frac{1}{4}$  OF SECTION 5, TOWNSHIP 12 NORTH, RANGE 19 WEST, P.M.M., MISSOULA COUNTY, MONTANA, BEING MORE PARTICULARLY DESCRIBED AS TRACT B OF CERTIFICATE OF SURVEY NO. 1328. - RECORDING REFERENCE: BOOK 810 OF MICRO RECORDS AT PAGE 1427

PARCEL 5:  $E\frac{1}{2}E\frac{1}{2}SW\frac{1}{4}SW\frac{1}{4}$  OF SECTION 5, TOWNSHIP 12 NORTH, RANGE 19 WEST, P.M.M., MISSOULA COUNTY, MONTANA. - RECORDING REFERENCE: BOOK 810 OF MICRO RECORDS AT PAGE 1428

# RES 8815 - Wildroot Phased Subdivision, Annexation, and Rezoning

Final Audit Report

2024-09-13

|                 |  |
|-----------------|--|
| Created:        | 2024-09-10                                   |
| By:             | Anneliese Brown (BrownA@ci.missoula.mt.us)   |
| Status:         | Signed                                       |
| Transaction ID: | CBJCHBCAABAATie9v_G577dDFvqre6lBaloX0P514OYg |

## "RES 8815 - Wildroot Phased Subdivision, Annexation, and Rezoning" History

Document created by Anneliese Brown (BrownA@ci.missoula.mt.us)


2024-09-10 - 5:00:23 PM GMT- IP address: 209.137.251.46

Document emailed to Andrea Davis (DavisA@ci.missoula.mt.us) for signature

2024-09-10 - 5:03:05 PM GMT

Email viewed by Andrea Davis (DavisA@ci.missoula.mt.us)

2024-09-10 - 5:03:56 PM GMT- IP address: 52.202.236.132

 Document e-signed by Andrea Davis (DavisA@ci.missoula.mt.us)

Signature Date: 2024-09-12 - 3:10:36 PM GMT - Time Source: server- IP address: 209.137.251.46

Document emailed to Claire Trimble (trimblec@ci.missoula.mt.us) for signature

2024-09-12 - 3:10:38 PM GMT

Email viewed by Claire Trimble (trimblec@ci.missoula.mt.us)

2024-09-12 - 3:11:23 PM GMT- IP address: 3.232.50.116

 Document e-signed by Claire Trimble (trimblec@ci.missoula.mt.us)

Signature Date: 2024-09-13 - 7:56:31 PM GMT - Time Source: server- IP address: 209.137.251.46

 Agreement completed.

2024-09-13 - 7:56:31 PM GMT



## Melissa Schnee

---

**From:** Kirk Paulsen  
**Sent:** Wednesday, November 6, 2024 9:43 AM  
**To:** Melissa Schnee  
**Subject:** Evaluation from California for the BOT packet  
**Attachments:** ics\_224\_Missoula 363.pdf

This is an evaluation from the Division on a fire Engine 363 was on this summer, ot sure if this is something to put in the BOT correspondents or not. The Crew was Tim DeVos, Jeff Noble, and Nathan Lapinski.



**Kirk Paulsen**  
**Assistant Chief, Missoula Rural Fire District**

☎ [\(406\) 549-6172](tel:(406)549-6172)  
📠 [\(406\) 317-2179](tel:(406)317-2179)  
✉ [kpaulsen@mrfdfire.org](mailto:kpaulsen@mrfdfire.org)  
🌐 [www.MRFDfire.org](http://www.MRFDfire.org)  
📍 [2521 South Avenue West, Missoula MT 59804](https://www.google.com/maps/place/2521+South+Avenue+West,+Missoula,+MT+59804)



====Public Records/Confidentiality Notice==== Missoula Rural Fire District ("MRFD") messages and attachments (if any) sent to or from this e-mail account may be considered public records depending on the content. MRFD is statutorily required to provide copies of public records to individuals requesting them unless the information is confidential or protected from disclosure by law. This message is intended for the use of the individual or entity named above. Any use, dissemination, disclosure or reproduction of this e-mail other than by the intended recipient is strictly prohibited. If you are not the intended recipient of this transmission, please notify the sender immediately, do not forward the message to anyone, and delete all copies.

## CREW PERFORMANCE RATING (instructions on back)

|   |   |   |
|---|---|---|
| <b>1. Crew Name and Designator</b><br>Missoula Engine 363 | <b>2. Incident Name and Number</b><br>Basin CA-SNF-000731 | <b>3. Location of Incident</b><br>Shaver Lake, CA   |
| <b>4. Crew Home Unit and Address</b><br>MRFD, Missoula MT | <b>5. Dates Assigned to Incident</b><br>07/05/24-07/14/24 | <b>6. Number of Operational Periods (Shifts)</b> <u>9.00</u><br><b>No. of Shifts Constructing Hotline</b> <u>0.00</u> |

### 7. Evaluation Criteria

|   |          |              |                   |                |
|---|----------|--------------|-------------------|----------------|
| Crew Type: (check one) IHC/T1 ___ T2IA ___ T2 ___ Engine <input checked="" type="checkbox"/> Helitack ___<br>Other ___<br>Agency Crew <u>MRFD</u> Contract Crew ___ Contract Number _____ | Superior | Satisfactory | Needs Improvement | Not Applicable |
| <b>Rating Factors</b><br>(not all criteria apply to all crews)  |          |              |                   |                |

| LEADERSHIP (CREW OVERHEAD) PERFORMANCE                              |       |   |   |   |
|---|-------|---|---|---|
| Communications (Inter- and Intra-crew)                              | ✓     |   |   |   |
| Coordination, Supervision, and Finance/Administration               | ✓     |   |   |   |
| Risk Management and Decision Making                                 | ✓     |   |   |   |
| Training and Mentoring  | ✓     |   |   |   |
| Crew Conduct (Fireline / Camp or Off Fireline)                      | ✓ / ✓ | / | / | / |
| Work and Tasks Completed as Assigned (Quantity and Quality of Work) | ✓     |   |   |   |

| TACTICS   |   |   |   |       |
|---|---|---|---|-------|
| Safety Practices  | ✓ |   |   |       |
| Line Construction / Hotline Construction or Direct Attack | / | / | / | ✓ / ✓ |
| Lookouts and Scouting                                     |   |   |   | ✓     |
| Fire Weather and Fire Behavior Observations               |   |   |   | ✓     |
| Chainsaw Operations and Felling Trees Operations          |   | ✓ |   |       |
| Spot Fire Attack  |   |   |   | ✓     |
| Mop Up  |   |   |   | ✓     |
| Spot Grid Organization                                    |   |   |   | ✓     |
| Portable Pump and Hose Lay Setup and Operations           |   | ✓ |   |       |

| SPECIALIZED OPERATIONS                    |  |  |  |   |
|---|--|--|--|---|
| Initial Attack Organization               |  |  |  | ✓ |
| Firing and Holding Organization           |  |  |  | ✓ |
| Wildland Urban Interface (WUI) Operations |  |  |  | ✓ |
| Map, Compass, and GPS Navigation          |  |  |  | ✓ |
| Incident Within an Incident               |  |  |  | ✓ |

| AVIATION OPERATIONS                                    |  |  |  |   |
|--|--|--|--|---|
| Safe Operations Around Aviation Assets                 |  |  |  | ✓ |
| Helispot Specifications and Construction               |  |  |  | ✓ |
| Directing Aviation Assets and Drops by Radio           |  |  |  | ✓ |
| Longline and Sling Load Operations                     |  |  |  | ✓ |
| Coordination with Aerial Supervision and Air Resources |  |  |  | ✓ |

| MISCELLANEOUS   |   |  |  |   |
|---|---|--|--|---|
| Physical Condition  | ✓ |  |  |   |
| Other (specify)   |   |  |  | ✓ |
| All Hazard Incident (specify incident type and assignment in Remarks section) |   |  |  |   |

**Remarks (use separate sheet if necessary and attach)**

Missoula Engine 363 worked with me on the Contingency/ Repair division from 7/05/24 through 7/14/24. Their performance during this period was exemplary. During their time on the division they were assigned multiple tasks, from supporting critical endangered wildlife habitat restoration to managing and sustaining a multi-tender water handling mission, their expertise, professionalism, and positive attitude were a welcome addition to the Division. I have rarely worked with such a competent and capable engine module and it would not be hyperbole to say that they were instrumental to the success of the Division. I would gladly work with them again.

|  |  |  |                         |
|--|--|--|-------------------------|
| <b>8. Crew Supervisor (printed name)</b><br>Tim DeVos      | <b>Crew Supervisor (signature)</b><br> | <input type="checkbox"/> This rating has been discussed with me.   | <b>Date</b><br>07/14/24 |
| <b>9. Rated by (printed name)</b><br>Charles "Eric" Daniel |  | <b>Rated by (signature)</b> CHARLES DANIEL <small>Digitally signed by CHARLES DANIEL Date: 2024.07.15 12:54:46 -07'00'</small> |                         |
| <b>Position on Incident</b><br>DIVS(t)                     |  | <b>Home Unit Identifier and Phone Number</b><br>CA-STF, D51 209-916-5619   |                         |

## CREW PERFORMANCE RATING FORM KEY AND INSTRUCTIONS

Rating crew performance is an important task for all fireline supervisors. When completed correctly and thoroughly, the ICS-224 form will provide useful information for determining crew effectiveness and efficiency and document incident performance. The form allows the fireline supervisor to rate crews in four primary areas: Leadership (Crew Overhead) Performance, Tactics, Specialized Operations, and Aviation Operations. Other factors can be rated in the Miscellaneous category. Below is a key for filling out the form along with the primary rating factors. Together, they define satisfactory performance by a crew. Ratings of other than satisfactory, either higher or lower, must be explained in the Remarks section. The completed rating will be given to the Planning Section before the rater leaves the incident.

### LEADERSHIP (CREW OVERHEAD) PERFORMANCE:

**Communications (Inter- and Intra-crew)** – Uses radio properly; communicates leaders intent; information transfer is timely.  
**Coordination, Supervision, and Finance/Administration** – Takes charge; motivates crew; coordinates with other crews, DIVS, STLD, and TFLD; is prompt (on time); crew is equipped and ready to work (per contract, mob guide, IIBMH); adheres to operational and business management protocols; provides copy of contract/ROSS order; fills out daily CTRs properly; leads crew to completion of assigned tasks.  
**Risk Management and Decision Making** – Identifies hazards and communicates to subordinates; identifies safety zones and routes and communicates to crew; decisions are timely; instructions to crew are understood; understands ICS system; positive interactions with others.  
**Training and Mentoring** – Uses CRWB(T) and squad bosses; sets up for success.  
**Crew Conduct (Fireline / Camp or Off Fireline)** – Crew camaraderie and cohesion; interaction with other crews or resources; deals appropriately with conduct issues. Rate both fireline, and camp or off fireline.  
**Work and Tasks Completed as Assigned (Quantity and Quality of Work)** – Crew completes work assignments within given timeframes and to the expected standards.

### TACTICS:

**Safety Practices** – Uses LCES; uses PPE properly for all operations; uses proper spacing on line; uses hand tools safely.  
**Line Construction / Hotline Construction or Direct Attack** – Uses proper type of berm and cup trench; production rate meets standard for fuel and crew type; tools and equipment are maintained; hotline and direct attack methods proper for fire behavior and fuel type. Rate both line construction, and hotline construction or direct attack.  
**Lookouts and Scouting** – Lookouts are properly spaced and posted; hazards are identified; crew watches for spot fires and reports them.  
**Fire Weather and Fire Behavior Observations** – Personnel are kept informed; updates are passed along to crew and squads.  
**Chainsaw Operations and Felling Trees Operations** – Personnel qualified; conducts safe cutting/falling operations; maintains equipment.  
**Spot Fire Attack** – Crew structure is adapted to spot fire attack needs; suppresses spot fires quickly and effectively.  
**Mop Up** – Most threatening areas are prioritized; searches for hotspots; uses water properly.  
**Spot Grid Organization** – Sets up grid properly for area and fuel type; conducts thorough searches for hotspots.  
**Portable Pump and Hose Lay Setup and Operations** – Sets up and operates pump properly; checks fuel system; maintains pump; acquires and sets up appropriate hose and hardware; pumps and spacing are adequate for length and terrain; uses water properly.

### SPECIALIZED OPERATIONS:

**Initial Attack Organization** – Follows LCES; sizeup and briefing are adequate.  
**Firing and Holding Organization** – Firing methods and device are appropriate for fuel type; holding crew understands assignment.  
**Wildland Urban Interface Operations** – Accomplishes assigned WUI tasks safely and effectively; crew is aware of WUI hazards and procedures.  
**Map, Compass, and GPS Navigation** – Crew is able to navigate using tools provided; relays GPS coordinates accurately and timely.  
**Incident Within an Incident** – Medical and injury response; hazardous materials; shelter deployment; burn victim.

### AVIATION OPERATIONS:

**Safe Operations Around Aviation Assets** – Organizational preparedness; takes direction from the Air Attack, Helitack, or Pilot.  
**Helispot Specifications and Construction** – Approach and departure paths are adequate; landing pads are adequate.  
**Directing Aviation Assets and Drops by Radio** – Uses panel markers properly; verbal descriptions identify needs.  
**Longline and Sling Load Operations** – Cargo loads are properly weighed, marked, manifested, and directed following procedures.  
**Coordination with Aerial Supervision and Air Resources** – Uses appropriate air/ground frequencies; properly clears fireline for drops.

### MISCELLANEOUS:

**Physical Condition** – Overall crew fitness allows for completion of assigned tasks; if fitness is an issue, explain in Remarks.  
**Other (specify)** – Complexity of assignment; steep terrain; high winds; equipment issues; business management issues.  
**All Hazard Incident** – If All Hazard Incident, specify incident type and assignment in Remarks.

### REMARKS:

Focus on tasks and jobs the crew spent the majority of their time on and/or any issues related to job performance, timeliness, and contract requirements. Cite specific examples that support the performance rating. The rater should take into account the capabilities of the entire crew (not just those of the crew leadership), and the complexity of the assignment (fuel type, terrain, environmental factors, etc.). Any rating of “Needs Improvement” requires explanation and recommendations for correction in Remarks. Issues related to business management must be explained.

### RATINGS:

**Superior** – Performance level is significantly in excess of expectations and is an example for others. Rating must be explained in Remarks.  
**Satisfactory** – Meets all standards, quality of work, timeliness, and production, or administrative issues did not affect overall Performance.  
**Needs Improvement** – Crew did not fully meet standards in one or more of the above measures. Outline recommended corrective actions needed. Rating must be explained in Remarks.

## Deputy Fire Marshal Monthly Report

Peter V. Giardino

October 2024

### Activities

#### **Business Inspections (re-inspections):**

- 6525 Highway 10 W.
- 5631 Highway 10 W.
- Mountain Home Montana re-inspection (passed)
- 9100 Bird Lane (Dispensary and Manufacturing) re-inspection needed.

#### **Certificate of Occupancy Finals (Business)**

#### **Residential Sprinkler Final, Rough-Ins, and C of O (residential) Inspections**

- 2025 Edward Ct.
- 1145 Big Flat Road (re-inspection pending)
- 1040 Chief Joseph Cluster
- 9883 Hatton Lane (rough-in sprinkler)
- 11538 Cattail Way
- 5617 Golf Drive
- 1726 Mossy Ridge

#### **Annexation**

- ACF for 5562 Handy Lane and prepared documents for Chief Horsens and Chief Finlay.
- Composed letter for Chief Finlay to Brent Olsen re: Lolo Hot Springs annexation.
- ACF for 13398 Highway 200 E.
- Prepared packet for BOT re: 5562 Handy Lane
- Met with property owner to sign ACF for 13398 Highway 200 E.
- Updates to tracking sheet.
- Prepared documents for Chief Horsens and Chief Finlay re: 13398 Highway 200 E.
- Prepared first-mailing to 3450 Galbavy Drive – new owners identified.

#### **Water Supply (cisterns, hydrants, etc.)**

- Spoke with MC attorney John Heart re: 8960 Professional Dr and scheduled a meeting with owner.
- Site visit Professional Drive with Chief Horsens to discuss plan for cistern required for subdivision.
- Inspected cistern on Alexandria Drive for access and signage.
- Reviewed and commented on cistern design issue for Aladin Way.
- Phone conversation re: water supply for Aladin Way.
- Phone conversation with IMEG to discuss cistern design for project on Futurity Drive.

#### **Lockboxes**

- Replaced key in lockbox for 4284 Jumbo Saddle Trail.
- Generated invoice for 7625 Pontrelli Place
- Generated invoice for Larch Camp Road homeowners to discuss.
- Delivered lockbox to 7625 Pontrelli Place.

### **Community Risk Reduction, Fire Prevention, and Code Compliance**

- Signed up for fire prevention school programs.
- Assisted MCFPA staff goodie bags for school programs next week.
- Site visit on Cowboy Trail to discuss fire safety for new filming of "1923".
- MCFPA school fire prevention programs.
  - Paxon Elementary
  - Hawthorn Elementary
  - St. Joseph's
- MCFPA school fire prevention programs.
  - Jeannette Rankin
- Site visit to 7625 Pontrelli Place to discuss C of O requirements.
- MCFPA school fire prevention programs.
  - Florence Carlton Middle School
  - Woodman School
  - Target Range Elementary School
- Email communication with Montana Fire Sprinklers re: sprinkler plans for new USFS museum.
- MCFPA school fire prevention program.
  - Mountain View
- Meeting at Morrison-Maierle to discuss access for new SFR on Soft Needle Rd.
- MCFPA school fire prevention programs
  - Clinton Elementary School
  - Bonner Elementary School
  - Lewis & Clark Elementary School
  - Franklin Elementary
- Sprinkler and fire alarm final inspection for Planetary Design – 9255 Bonner Mill Rd.
- Reviewed site plan for new Zip Beverage facility at 6400 Highway 10 W.
- MCFPA school fire prevention program
  - Hellgate Elementary
- Provided sprinkler requirements for new SFR planned for Orchard Home Company Addition.

### **Fire Investigations**

- 2222 Woodlawn Ave.
- Began fire investigation report for the Woodland Avenue fire.
- Reviewed Tremper Drive vehicle fire investigation report and submitted to Chief Horsens.
- Completed 2222 Woodlawn Avenue fire investigation report and submitted to Chief Horsens

### **Classes/Training**

- Applied to the National Fire Academy (NFA) for a Commercial Fire Sprinkler Review class.
- State hazmat training (drill) with CST.
- Created worksheet for Inspections training next week.
- Instructed Image Trend business inspection training, Oct. 28-30.

### **Plan Reviews**

- 5901 Mullan Rd.
- 10269 Oral Zumwalt Way
- 12098 Expedition Dr.
- 10223 Pale Morning Ct.
- 10227 Pale Morning Ct.
- 13795 Sapphire Dr.
- 6896 Jack Pine Ct.
- 14030 Hampton Drive
- 4643 Langdon Ct (sprinkler plans)
- 6015 Miller Creek Road

- 1835 Mullan Trail
- 5800 Highway 93 S.
- 3825 North Avenue W.
- 11531 Allomont Dr.
- 11525 Royal Coachman
- 603 N. Grove Street
- 7807 Missoula Go Cluster (sprinkler plans)
- 3450 Sierra Drive (sprinkler plans)
- 1850 Frey Lane
- 1640 Cote Lane
- 18495 Highway 200 E.
- 6525 Highway 10 W.
- 7700 Lime Springs Trail
- 329 Tyler Way
- 9200 Glenwood Ct

#### **Image Trend:**

- Continued work editing business inspection forms and reports.
- Teams meeting to troubleshoot inspection form issues.
- Teams meeting to finalize inspection form and reports.
- Teams meeting with Image Trend to discuss scheduling inspections module.
- Webinar on Locations, Occupancies, and Inspections.
- Teams meeting to run through Inspection module prior to training next week.
- Updated personnel to allow inspections access.
- Meeting with Image Trend to discuss fire investigations module.

#### **Assignments and Other Activities**

- Updated CRR folder in shared drive
- Station tour/visit with 311's crew.
- Meeting with Chief Horsens to discuss DFM responsibilities.
- Assisted with lieutenant's assessment, scoring proctor for written scenario.
- Safety Committee meeting.

## Oct 2024 IT Report

- Proceeded with customization of Crewforce MDT software based on feedback from end users. Went several ride-alongs to observe in field use. Current configuration appears to be well received. Of note is that Tyler Technology has renamed Crewforce to Fire Field Mobile.
- Reconfirmed Wi-Fi is turned off on all MDTs to conform with last month's determination that only using Cell data link provides better reliability for connectivity to 911 dispatch.
- Corrected data sync problem between our redundant File Servers with assistance from Univision.
- Attended ransomware webinar.
- File server data backup media management.
- Assist with Captain's assessment computer setup
- Assist Deputy Fire Marshal with new Pre Plan software access
- Corrected ID printer problem
- New employee's software setup
- New resident software setup
- Blue Card training computer's software updates prior to training
- Met with Verkada security camera representatives
- Reconfigured mitigation tablet for Resident Volunteer Coordinator use. Required upgrading operating system to Windows Pro version in order to work in Domain environment.
- Created new virtual machine (VM) on MFRD host server in county data center for use in assigning personnel to apparatus.
- Continued researching website Contact Us email problem
- Analyzed internet outages at stations 1 and 4. Determined due to vendor upgrades.
- Corrected Active Directory (AD) synchronization with Microsoft 365 problem.
- Station Alerting at station 2 experiencing occasional "network down" conditions.
- Station Alerting experienced a complete disconnect from 911 for over 24 hours requiring several hours of troubleshooting on Saturday 19<sup>th</sup> with limited weekend support from city and 911 center personnel. Resolution required assistance from Tyler Technology restarting a software component on 911 servers.
- Researched Black Mountain accounting software interface with new scheduling software, Slate.

Joe Ford  
IT Manager

# Public Relations Outreach Breakdown

October 2024

- 14 total documented events
  - 7 social media posts (Facebook/Instagram/Twitter)
  - 1 scheduled media appearance (Newspaper/Radio/TV)
  - 3 in station event (Car Seat Event/Station Tour)
  - 0 impromptu media appearance (Newspaper/Radio/TV)
  - 3 other (Fundraiser/Parade/Etc.)

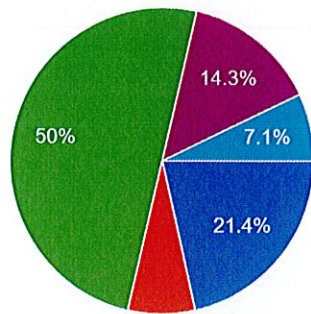
Date

14 responses

Oct 2024 | 7 2 8 10 11 12 15 2 19 25 26 27 2 31

### Type

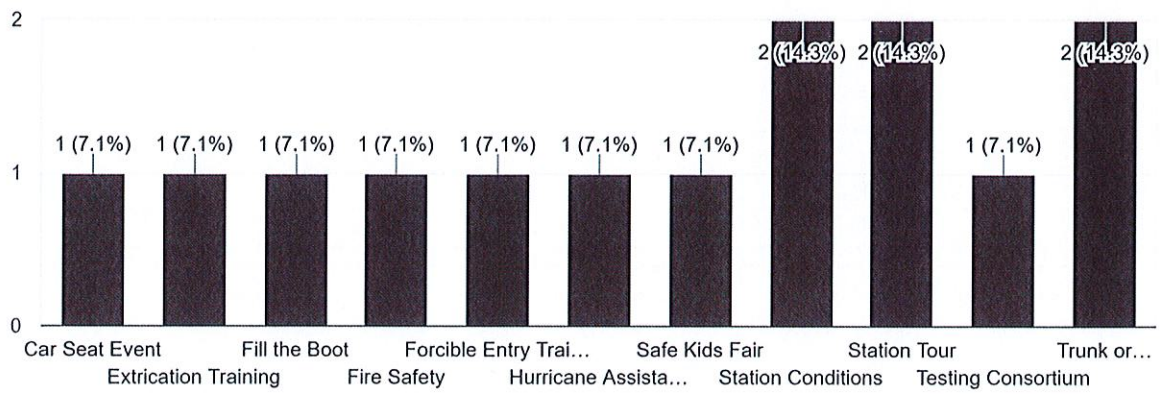
14 responses



- In-station event
- Scheduled media appearance
- Impromptu/incident media appearance
- Social Media Post
- Trunk or Treat
- Puppet Show

### Topic Being Discussed

14 responses



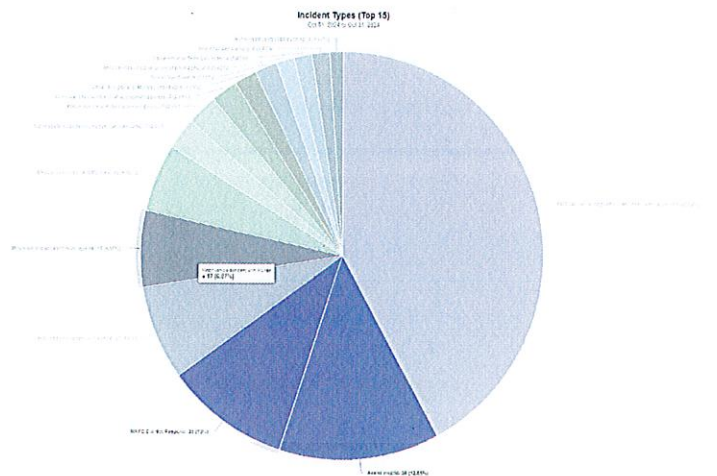
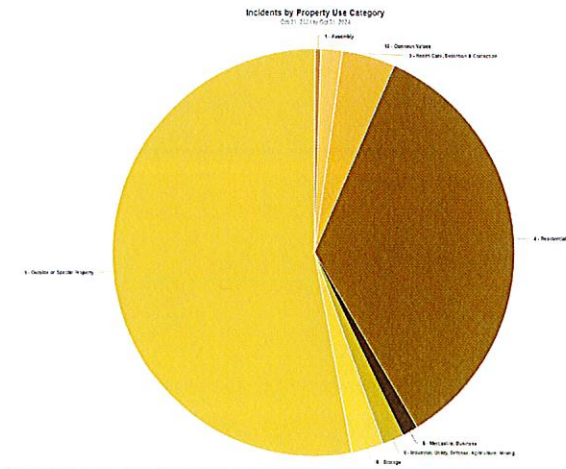
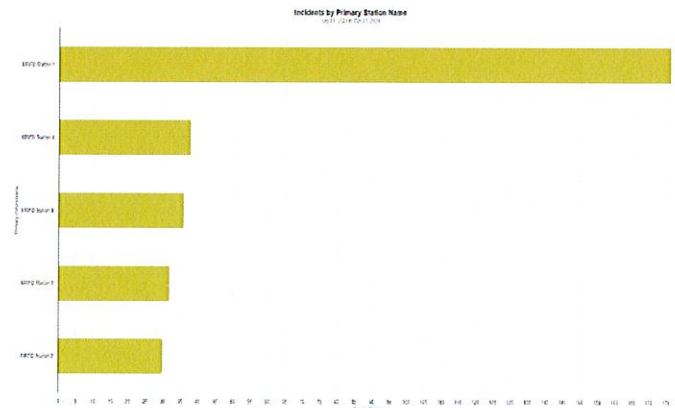
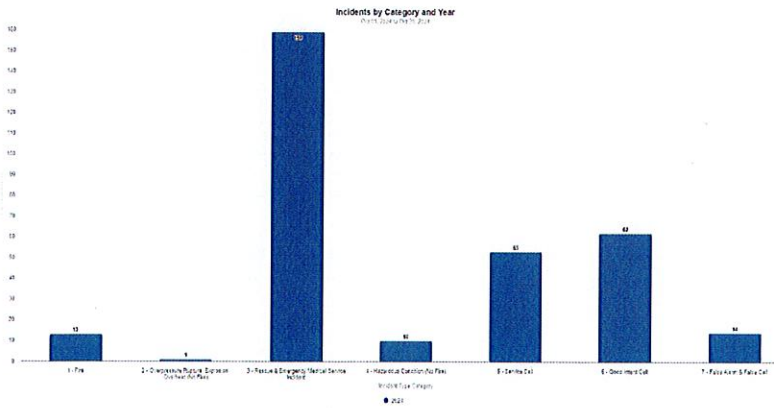


# MRFD CFS Report

## October 2024

### Incident Numbers

|              |      |              |      |                |         |
|--------------|------|--------------|------|----------------|---------|
| October 2024 | 323  | October 2023 | 305  | Percent Change | + 5.90% |
| YTD 2024     | 3444 | YTD 2023     | 3004 | Percent Change | +14.65% |





# MISSOULA RURAL FIRE DISTRICT

Date: November 13, 2024

Board of County Commissioners  
200 W Broadway St  
Missoula, Montana 59802

The Missoula Rural Fire District Board of Trustees met in regular session and has approved the Petitions for Annexation for services by this Fire District for the following properties:

| Address (city, state, zip)               | Property Owner(s)   | Taxpayer ID |
|--|---|-------------|
| 6652 Handy Lane<br>Missoula, MT 59802    | Jason Handy<br>Tricia handy<br>Thomas H. Boone – Trustee<br>Group of Four, LLC Profit<br>Sharing Plan | 4160425     |
| 11398 Highway 200 E.<br>Bonner, MT 59823 | Christopher Guttenberg  | 4019701     |

Sincerely,

Paul Finlay, Fire Chief  
Missoula Rural Fire District

Enclosures:



# MISSOULA RURAL FIRE DISTRICT

Date: October 22, 2024

To: Paul Finlay, Fire Chief  
Cory Horsens, Deputy Chief

Re: **Address: 13398 Highway 200 E., Bonner, MT 59823**

On October 17, 2024, a Criteria for Annexation inspection was conducted by the Community Risk Reduction Division of the Missoula Rural District for the above-referenced address. The property owner was contacted and has also received a signed copy of this Annexation Criteria Form (ACF) for their records. We explained that once we received the signed copy of the ACF to acknowledge their understanding and receipt of the form, we would submit this Petition for Annexation and ACF to the Deputy Chief and Fire Chief for their consideration.

After this inspection, the Community Risk Reduction Division recommends annexation of 13398 Highway 200 E. into the Missoula Rural Fire District.

Respectfully submitted,

*Peter V. Giardino*

Peter V. Giardino  
Deputy Fire Marshal



# MISSOULA RURAL FIRE DISTRICT

To: MRFD Board of Trustees  
From: Fire Chief Paul Finlay and Deputy Chief Cory Horsens  
Re: **Recommendation of Approval for Annexation: 13398 Highway 200 E., Bonner, MT 59823**

Dear Chair Murphy and Members of the Board of Trustees:

Upon our review, we concur with the findings of the Community Risk Reduction Division.

Therefore, it is our recommendation to the Board that the property listed above should be annexed into the Missoula Rural Fire District.

Sincerely,

10/28/24

Cory Horsens, Deputy Fire Chief  
Missoula, Rural Fire District

Date

11/4/24

Paul Finlay, Fire Chief  
Missoula Rural Fire District

Date



# MISSOULA RURAL FIRE DISTRICT

## PETITION FOR ANNEXATION

We, the undersigned, being taxpaying freeholders and whose names appear upon the last completed assessment roll, do hereby petition the Board of County Commissioners to annex to the Missoula Rural Fire District, the following parcel:

4019701      13398 Hwy 200 E. BONNER, MT 59823  
Taxpayer ID:      Property Address:

CA-2202-18-1-01-02-0000      N/A  
Geo Code:      Subdivision Name (if applicable)

T13NR17W-18 (PARCEL 1)  
Legal Description (Quarter, Section, Township, Range, Lot #, Block, COS #, etc.)

Name of Insurance Company – Property Insurance

Insurance Phone Number

CHRIS GOTTENBERG      (406) 660-1422      chris.gottenberg@gmail.com  
Contact Name for this Petition      Contact's Phone Number      Contact's Email Address

Property Owner Signature(s)

Printed Name(s)

Mailing Address

(sign and date)

CHRISTOPHER GOTTENBERG      PO BOX 7913  
MISSOULA, MT  
59807

(sign and date)

(sign and date)

**FOR OFFICE USE ONLY:**

Annexation accepted and approved this 12 day of November, 2021  
by the Board of Trustees for the Missoula Rural Fire District.

Signature: [Signature]  
Title: Bob Clark



Annexation Criteria Form

Property Information

Property Address: 13398 Highway 200 E.

Zip Code: 59823

Property Tax ID: 4019701

Station: MRFD Station 4 (4)

Inspection Information

Inspector: Giardino, Pete

Date Completed: 10/17/2024

Notes

Notes: Homeowner plans to submit plans and build a new single-family residence.

Signatures

Signatures

Complex Control

Signature Graphic

Signature Date

Chris Guttenberg Owner/Rep.

10/21/2024

Pete Giardino Inspector

10/21/2024

Fire Chief Signature  
Date:

11/12/24

Signature Name:  
(Please Print Name):

Pete Finlay

Fire Chief Signature:

[Handwritten Signature]

Board Chair Person  
Signature Date:

~~12/11/24~~ 11/12/24 JBM

Board Chair Person  
Name (Please Print):

Ben Murphy

Board Chair Person  
Signature:

[Handwritten Signature]

**Annexation**

**Fire Department Services**

| Question | Answer | Notes |
|----------|--------|-------|
|----------|--------|-------|

|   |                          |  |
|---|--------------------------|--|
| What is the distance to the closest MRFD fire station (enter station #) | 4.7 miles from station 4 |  |
|---|--------------------------|--|

|  |                                   |  |
|--|-----------------------------------|--|
| What is the distance to the closest mutual/auto aid partner (enter agency and station #) | 9.2 miles from East Missoula Fire |  |
|--|-----------------------------------|--|

**Means of Access**

| Question | Answer | Notes |
|----------|--------|-------|
|----------|--------|-------|

|  |    |   |
|--|----|---|
| Are there buildings more than 400 sf (ground floor area) and/or public occupancies with structural components? | No | Planning to build a single-family residence |
|--|----|---|

|   |     |  |
|---|-----|--|
| Is there clear openings through gates at least 2 feet wider than the means of access it controls? | Yes |  |
|---|-----|--|

|                            |   |  |
|----------------------------|---|--|
| Number of means of access. | 2 |  |
|----------------------------|---|--|

|  |     |  |
|--|-----|--|
| Can the fire department realistically access the property after a snow event or icy conditions? (*CRITICAL*) | Yes |  |
|--|-----|--|

**Roadways/Fire lanes**

| Question | Answer | Notes |
|----------|--------|-------|
|----------|--------|-------|

|   |     |  |
|---|-----|--|
| Are roadways constructed of a hard, all-weather surface designed to support all imposed loads of MRFD apparatus? (*CRITICAL*) | Yes |  |
|---|-----|--|

|  |     |  |
|--|-----|--|
| Are the roadways a minimum clear width of 16 ft? | Yes |  |
|--|-----|--|

|   |     |  |
|---|-----|--|
| Is there at least 13 ft 6 in. nominal vertical clearance over the full width of the roadway? (*CRITICAL*) | Yes |  |
|---|-----|--|

|   |     |  |
|---|-----|--|
| Do the curves/turns in the roadway have a minimum radius of 60 ft to the outside of the turn? | Yes |  |
|---|-----|--|

|  |    |  |
|--|----|--|
| Is/Are bridge(s) present that require access to the property/structure(s) (*CRITICAL*) | No |  |
|--|----|--|

|  |     |  |
|--|-----|--|
| Is/Are bridge(s) designed to support the imposed load of all MRFD fire apparatus. (*CRITICAL*) | N/A |  |
|--|-----|--|

|  |     |  |
|--|-----|--|
| Is the load limit clearly posted at both approaches to the bridge? | N/A |  |
|--|-----|--|

|  |     |  |
|--|-----|--|
| Has the vegetation adjacent to the roadway been mitigated? | Yes |  |
|--|-----|--|

**Grades**

| Question | Answer | Notes |
|----------|--------|-------|
|----------|--------|-------|

|   |    |  |
|---|----|--|
| Are there any road/driveway grades steeper than 10 percent? | No |  |
|---|----|--|

**Dead Ends**

| Question | Answer | Notes |
|----------|--------|-------|
|----------|--------|-------|

Are connections at either water source (if applicable) appropriate for MRFD use? Yes

### Building Construction

| Question                                      | Answer | Notes                                     |
|---|--------|---|
| Non-combustible roof?                         | Yes    | Plans call for non-combustible roof       |
| Soffits enclosed?                             | Yes    |   |
| Soffit, attic and crawl space vents screened? | Yes    |   |
| Non-combustible siding?                       | Yes    | Non-combustible siding is planned.        |
| Double pane windows?                          | Yes    |   |
| Is/Are deck(s) present?                       | Yes    | Deck is planned                           |
| Is/Are decks(s) non-combustible?              | Yes    |   |
| Are decks fire resistant?                     | Yes    | Plan is to install a fire-resistant deck. |

### Vegetation Clearance From Structures

| Question  | Answer | Notes                                      |
|---|--------|--|
| 30-100 ft, Reduced Fuel Zone-Is a fuel break provided by the disruption of the vertical and/or horizontal continuity of flammable/combustible vegetation? | Yes    |  |
| 0-30 ft, Defensible Space Zone-Is all flammable vegetation and combustible growth clear of this area? (*CRITICAL*)  | Yes    | Homeowner is aware of fire-wise vegetation |
| Is there a potential difference in the wildfire vs structure response capability? (Explain in comments)   | No     |  |

|   |     |              |
|---|-----|--------------|
| Is there a dead-end roadway more than 300 ft in length?   | No  | Not 300 feet |
| If yes, is there an appropriate turnaround for fire apparatus? (*CRITICAL*)                         | N/A |              |
| Is there a dead end/cul-de-sac that exceeds 1200 ft in length?                                      | No  |              |
| If yes, are there approved intermediate turnarounds at a maximum of 1200 ft intervals? (*CRITICAL*) | N/A |              |

#### Driveways

| Question   | Answer | Notes        |
|--|--------|--------------|
| Is the driveway longer than 150 ft?  | No     |              |
| If yes, is there an appropriate turnaround for fire apparatus? (*CRITICAL*)          | N/A    |              |
| Is the driveway a minimum of 12 feet in width and 13 ft 6 in. in vertical clearance? | Yes    |              |
| If the driveway is longer than 300 ft, are there pullouts?                           | N/A    | Not 300 feet |

#### Signage/Premises Identification

| Question   | Answer | Notes |
|--|--------|-------|
| Are the road and address signs made of appropriate materials and properly located? | Yes    |       |

#### Building Access

| Question   | Answer | Notes  |
|--|--------|--|
| Is there adequate fire apparatus access provided to within 150 ft of any point of the exterior wall of each building? (300 ft for a sprinklered building) (*CRITICAL*) | Yes    | There are several buildings on site and there is access provided to those buildings. Plans for new building will have adequate access. |

#### Building Separation

| Question                                     | Answer | Notes   |
|--|--------|---|
| Are building separations greater than 30 ft? | Yes    | There are several buildings on site, however, they are separated by more than 30-feet from where the new single-family residence will be built. |

#### Automatic Fire Protection/Fire Warning Systems

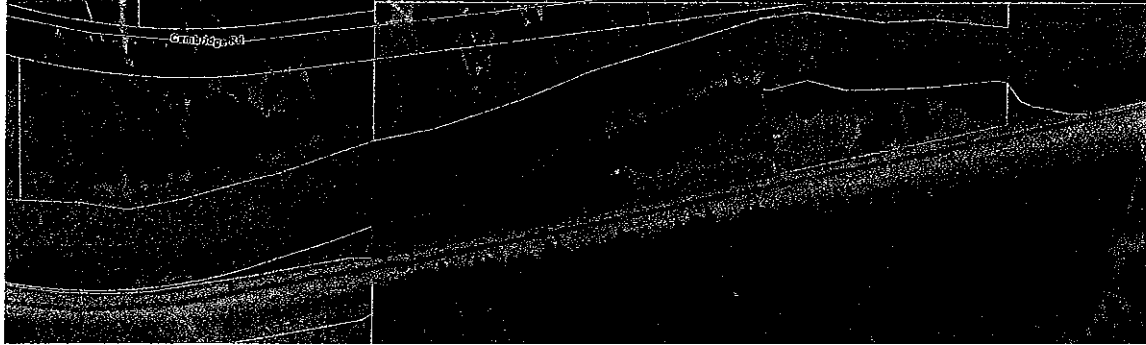
| Question  | Answer | Notes   |
|---|--------|---|
| Is the building(s) protected by an automatic sprinkler system in accordance with NFPA 13, 13R or 13D? | No     | There are no plans to install an NFPA 13D sprinkler system for the new building.  |
| Does the building(s) have a local/supervised fire alarm system in accordance with NFPA 72?            | No     | There are no plans to install an NFPA 72 alarm system, however, there will be smoke and CO detectors installed per building code. |

#### Water Supply

| Question   | Answer                             | Notes |
|--|------------------------------------|-------|
| What is the distance to the nearest fire hydrant?  | 3.9 miles from 9410 Highway 200 E. |       |
| What is the distance to the nearest water storage (cistern or draft site) that meets NFPA 1142 requirements? | None that meet NFPA requirements   |       |

Tax Year: 2024

Scale: 1:3000.61 Basemap: Imagery Hybrid



## Summary

### Primary Information

|   |  |
|---|--|
| Property Category: RP   | Subcategory: Residential Property                                      |
| Geocode: 04-2202-18-1-01-02-0000  | Assessment Code: 0004019701  |
| <b>Primary Owner:</b><br>GUTTENBERG CHRISTOPHER JOHN<br>PO BOX 7913<br>MISSOULA, MT 59807-7913<br>Note: See Owners section for all owners | <b>Property Address:</b><br>13398 HIGHWAY 200 E<br>GREENOUGH, MT 59823 |
| Certificate of Survey: 5717   | Legal Description: S18, T13 N, R17 W, C.O.S. 5717, PARCEL 1, NE4       |
| Last Modified: 9/28/2024 17:21:7 PM   |  |

### General Property Information

|  |  |
|--|--|
| Neighborhood: 204.006.C                                      | Property Type: VAC_R - Vacant Land - Rural |
| Living Units: 0  | Levy District: 04-0590-14-2                |
| Zoning:  | Ownership: 100                             |
| LinkedProperty: No linked properties exist for this property |  |
| Exemptions: No exemptions exist for this property            |  |
| Condo Ownership:<br>General: 0                               | Limited: 0                                 |

### Property Factors

|                 |                        |
|-----------------|------------------------|
| Topography: n/a | Fronting: n/a          |
| Utilities: n/a  | Parking Type: n/a      |
| Access: n/a     | Parking Quantity: n/a  |
| Location: n/a   | Parking Proximity: n/a |



# Cadastral Property Report

Tax Year: 2024

## Land Summary

| Land Type:        | Acres: | Value: |
|-------------------|--------|--------|
| Grazing           | 0      | 0      |
| Fallow            | 0      | 0      |
| Irrigated         | 0      | 0      |
| Continuous Crop   |        |        |
| Wild Hay          | 0      | 0      |
| Farm site         | 0      | 0      |
| ROW               | 0      | 0      |
| NonQual Land      | 0      | 0      |
| Total Ag Land     | 0      | 0      |
| Total Forest Land | 0      | 0      |
| Total Market Land | 2.53   | 182090 |

## Deed Information

| Deed Date | Book | Page  | Recorded Date | Document Number | Document Type   |
|-----------|------|-------|---------------|-----------------|-----------------|
| 9/10/2020 | 1039 | 262   | 9/11/2020     |                 | Warranty Deed   |
| 9/9/2020  | 1039 | 261   | 9/11/2020     |                 | Quit Claim Deed |
| 7/13/2005 | 0755 | 01315 | N/A           |                 |                 |

## Owners

### Party #1

|                      |  |
|----------------------|--|
| Default Information: | GUTTENBERG CHRISTOPHER JOHN<br>PO BOX 7913 MISSOULA, MT 59807-7913 |
| Ownership %:         | 100  |
| Primary Owner:       | Yes  |
| Interest Type:       | Conversion   |
| Last Modified:       | 9/18/2020 10:19:7 AM   |

## Appraisals

### Appraisal History

| Tax Year | Land Value | Building Value | Total Value | Method |
|----------|------------|----------------|-------------|--------|
| 2024     | 182090     | 0              | 182090      | COST   |
| 2023     | 182090     | 0              | 182090      | COST   |
| 2022     | 161732     | 0              | 161732      | COST   |

## Market Land



# Cadastral Property Report

Tax Year: 2024

## Market Land Item #1

|                  |                  |
|------------------|------------------|
| Method: Acre     | Type: Category 1 |
| Width: n/a       | Depth: n/a       |
| Square Feet: n/a | Acres: 2.53      |
| Class Code: 2101 | Value: 182090    |

## Dwellings

No dwellings exist for this parcel

## Other Buildings

No other buildings exist for this parcel

## Commercial

No commercial buildings exist for this parcel

## Ag/Forest Land

No ag/forest land exists for this parcel

## Easements

No easements exist for this parcel

## Disclaimer



# Cadastral Property Report

Tax Year: 2024

The Montana State Library (MSL) provides this product/service for informational purposes only. MSL did not produce it for, nor is it suitable for legal, engineering, or surveying purposes. Data from disparate sources may not be in vertical alignment. Consumers of this information should review or consult the primary data and information sources to ascertain the viability of the information for their purposes. The MSL provides these data in good faith and in no event, shall be liable for any incorrect results or analysis, any lost profits and special, indirect or consequential damages to any party, arising out of or in connection with the use or the inability to use the data or the services provided. The MSL makes these data and services available as a convenience to the public, and for no other purpose. The MSL reserves the right to change or revise published data and/or services at any time.



# MISSOULA RURAL FIRE DISTRICT

Date: October 2, 2024

To: Paul Finlay, Fire Chief  
Cory Horsens, Deputy Chief

Re: **Address: 5562 Handy Lane, Missoula, MT 59802**

On October 2, 2024, a Criteria for Annexation inspection was conducted by the Community Risk Reduction Division of the Missoula Rural Fire District for the above-referenced address. The property owner was contacted and has also received a signed copy of this Annexation Criteria Form (ACF) for their records. We explained that once we received the signed copy of the ACF to acknowledge their understanding and receipt of the form, we would submit this Petition for Annexation and ACF to the Deputy Chief and Fire Chief for their consideration.

After this inspection, the Community Risk Reduction Division recommends annexation of 5562 Handy Lane into the Missoula Rural Fire District.

Respectfully submitted,

*Peter V. Giardino*

Peter V. Giardino  
Deputy Fire Marshal



# MISSOULA RURAL FIRE DISTRICT

To: MRFD Board of Trustees  
From: Fire Chief Paul Finlay and Deputy Chief Cory Horsens  
Re: **Recommendation of Approval for Annexation: 5562 Handy Lane, Missoula, MT 59802**

Dear Chair Murphy and Members of the Board of Trustees:

Upon our review, we concur with the findings of the Community Risk Reduction Division.

Therefore, it is our recommendation to the Board that the property listed above should be annexed into the Missoula Rural Fire District.

Sincerely,

10-7-24

Cory Horsens, Deputy Fire Chief  
Missoula, Rural Fire District

Date

10/17/24

Paul Finlay, Fire Chief  
Missoula Rural Fire District

Date



# MISSOULA RURAL FIRE DISTRICT

## PETITION FOR ANNEXATION

We, the undersigned, being taxpaying freeholders and whose names appear upon the last completed assessment roll, do hereby petition the Board of County Commissioners to annex to the **Missoula Rural Fire District**, the following parcel:

4160425      5562 Handy Lane, Missoula, MT 59802

**Taxpayer ID:**                      **Property Address:**

04-2201-20-1-01-15-0000

N/A

**Geo Code:**

**Subdivision Name (if applicable)**

S20, T13 N, R18 W, C.O.S. 5850, PARCEL 3

**Legal Description** (*Quarter, Section, Township, Range, Lot #, Block, COS #, etc.*)

**Name of Insurance Company – Property Insurance**

Jason Handy

406-565-7479

**Insurance Phone Number**

handy2550@gmail.com

**Contact Name for this Petition**

**Contact's Phone Number**

**Contact's Email Address**

**Property Owner Signature(s)**

**Printed Name(s)**

**Mailing Address**

Jason Handy 8-2024  
(sign and date)

Jason Handy

223 PERU FLAT  
Butte, MT 59702

[Signature]  
(sign and date)

Tricia Handy

" "

(sign and date)

**FOR OFFICE USE ONLY:**

Annexation accepted and approved this 12 day of November, 2024  
by the Board of Trustees for the Missoula Rural Fire District.

Signature: [Signature]

Title: Bob Chen



# MISSOULA RURAL FIRE DISTRICT

## PETITION FOR ANNEXATION

We, the undersigned, being taxpaying freeholders and whose names appear upon the last completed assessment roll, do hereby petition the Board of County Commissioners to annex to the Missoula Rural Fire District, the following parcel:

4160425      5562 Handy Lane, Missoula, MT 59802

**Taxpayer ID:**

**Property Address:**

04-2201-20-1-01-15-0000

N/A

**Geo Code:**

**Subdivision Name (if applicable)**

S20, T13 N, R18 W, C.O.S. 5850, PARCEL 3

**Legal Description** (*Quarter, Section, Township, Range, Lot #, Block, COS #, etc.*)

**Name of Insurance Company – Property Insurance**

**Insurance Phone Number**

Jason Handy

406-565-7479

handy2550@gmail.com

**Contact Name for this Petition**

**Contact's Phone Number**

**Contact's Email Address**

**Property Owner Signature(s)**

**Printed Name(s)**

**Mailing Address**

Thomas A. Roark Trustee

THOMAS A. ROARK TRUSTEE

223 PERU FLAT  
Butte, MT 59702

For Group of Four, LLC  
Profit-sharing Plan

Group of Four, LLC  
Profit-sharing Plan

230 Kent Ave  
Missoula, MT 59801

(sign and date) (Lien Holder)

(Lien Holder)

(sign and date)

**FOR OFFICE USE ONLY:**

Annexation accepted and approved this 12 day of November, 2024  
by the Board of Trustees for the Missoula Rural Fire District.

Signature: [Signature]

Title: Secretary



Annexation Criteria Form

Property Information

Property Address: 5562 Handy Lane

Zip Code: 59802

Property Tax ID: 4160425

Station: MRFD Station 4 (4)

Inspection Information

Inspector: Giardino, Pete

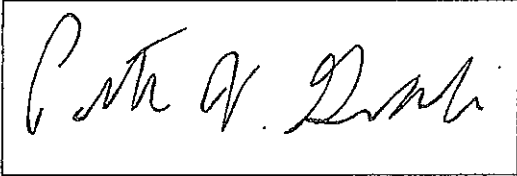
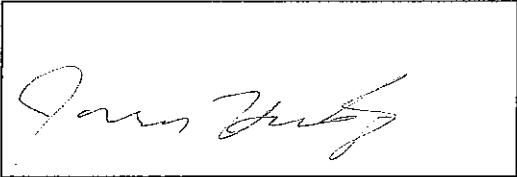
Date Completed: 09/11/2024

Notes

Notes: This property was recently de-annexed from the city into MRFD's jurisdiction. No structure(s) exist but a permit for a new single-family residence has been submitted to MRFD for our review.

Signatures

Signatures

| Complex Control         | Signature Graphic  | Signature Date |
|-------------------------|--|----------------|
| Pete Giardino Inspector |   | 09/12/2024     |
| Jason Handy Owner/Rep.  |  | 10/02/2024     |

Fire Chief Signature Date:

11/12/24

Signature Name: (Please Print Name):

Paul Finlay

Fire Chief Signature:



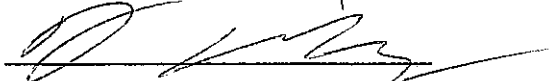
Board Chair Person Signature Date:

~~12/12/24~~ 11/12/24

Board Chair Person Name (Please Print):

Ben Murphy

Board Chair Person Signature:



**Annexation**

**Fire Department Services**

| Question   | Answer                   | Notes |
|--|--------------------------|-------|
| What is the distance to the closest MRFD fire station (enter station #)                  | 7.3 miles from Station 4 |       |
| What is the distance to the closest mutual/auto aid partner (enter agency and station #) | 3.1 miles from EMF       |       |

**Means of Access**

| Question   | Answer | Notes                                   |
|--|--------|---|
| Are there buildings more than 400 sf (ground floor area) and/or public occupancies with structural components? | No     | New single-family residence is planned. |
| Is there clear openings through gates at least 2 feet wider than the means of access it controls?              | Yes    |   |
| Number of means of access.   | 2      |   |
| Can the fire department realistically access the property after a snow event or icy conditions? (*CRITICAL*)   | Yes    |   |

**Roadways/Fire lanes**

| Question  | Answer | Notes |
|---|--------|-------|
| Are roadways constructed of a hard, all-weather surface designed to support all imposed loads of MRFD apparatus? (*CRITICAL*) | Yes    |       |
| Are the roadways a minimum clear width of 16 ft?  | Yes    |       |
| Is there at least 13 ft 6 in. nominal vertical clearance over the full width of the roadway? (*CRITICAL*)                     | Yes    |       |
| Do the curves/turns in the roadway have a minimum radius of 60 ft to the outside of the turn?                                 | Yes    |       |
| Is/Are bridge(s) present that require access to the property/structure(s) (*CRITICAL*)  | Yes    |       |
| Is/Are bridge(s) designed to support the imposed load of all MRFD fire apparatus. (*CRITICAL*)                                | Yes    |       |
| Is the load limit clearly posted at both approaches to the bridge?  | No     |       |
| Has the vegetation adjacent to the roadway been mitigated?  | Yes    |       |

**Grades**

| Question  | Answer | Notes |
|---|--------|-------|
| Are there any road/driveway grades steeper than 10 percent? | No     |       |

**Dead Ends**

| Question | Answer | Notes |
|----------|--------|-------|
|          |        |       |

|   |     |
|---|-----|
| Is there a dead-end roadway more than 300 ft in length?   | Yes |
| If yes, is there an appropriate turnaround for fire apparatus? (*CRITICAL*)                         | Yes |
| Is there a dead end/cul-de-sac that exceeds 1200 ft in length?                                      | Yes |
| If yes, are there approved intermediate turnarounds at a maximum of 1200 ft intervals? (*CRITICAL*) | Yes |

#### Driveways

| Question   | Answer | Notes                  |
|--|--------|------------------------|
| Is the driveway longer than 150 ft?  | Yes    |                        |
| If yes, is there an appropriate turnaround for fire apparatus? (*CRITICAL*)          | Yes    |                        |
| Is the driveway a minimum of 12 feet in width and 13 ft 6 in. in vertical clearance? | Yes    |                        |
| If the driveway is longer than 300 ft, are there pullouts?                           | N/A    | Driveway not 300 feet. |

#### Signage/Premises Identification

| Question   | Answer | Notes |
|--|--------|-------|
| Are the road and address signs made of appropriate materials and properly located? | Yes    |       |

#### Building Access

| Question   | Answer | Notes |
|--|--------|-------|
| Is there adequate fire apparatus access provided to within 150 ft of any point of the exterior wall of each building? (300 ft for a sprinklered building) (*CRITICAL*) | Yes    |       |

#### Building Separation

| Question                                     | Answer | Notes |
|--|--------|-------|
| Are building separations greater than 30 ft? | Yes    |       |

#### Automatic Fire Protection/Fire Warning Systems

| Question  | Answer | Notes |
|---|--------|-------|
| Is the building(s) protected by an automatic sprinkler system in accordance with NFPA 13, 13R or 13D? | No     |       |
| Does the building(s) have a local/supervised fire alarm system in accordance with NFPA 72?            | No     |       |

#### Water Supply

| Question   | Answer    | Notes                 |
|--|-----------|-----------------------|
| What is the distance to the nearest fire hydrant?  | 0.7 miles | Within city limits.   |
| What is the distance to the nearest water storage (cistern or draft site) that meets NFPA 1142 requirements? | 0.3 miles | 10,000-gallon cistern |
| Are connections at either water source (if applicable) appropriate for MRFD use?                             | Yes       |                       |

### Building Construction

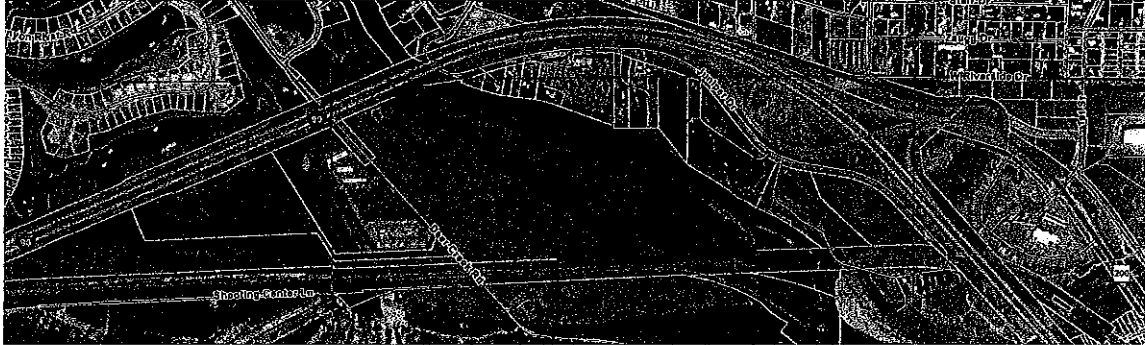
| Question                                      | Answer | Notes |
|---|--------|-------|
| Non-combustible roof?                         | Yes    |       |
| Soffits enclosed?                             | Yes    |       |
| Soffit, attic and crawl space vents screened? | Yes    |       |
| Non-combustible siding?                       | No     |       |
| Double pane windows?                          | Yes    |       |
| Is/Are deck(s) present?                       | No     |       |
| Is/Are decks(s) non-combustible?              | N/A    |       |
| Are decks fire resistant?                     | N/A    |       |

### Vegetation Clearance From Structures

| Question  | Answer | Notes |
|---|--------|-------|
| 30-100 ft, Reduced Fuel Zone-Is a fuel break provided by the disruption of the vertical and/or horizontal continuity of flammable/combustible vegetation? | Yes    |       |
| 0-30 ft, Defensible Space Zone-Is all flammable vegetation and combustible growth clear of this area? (*CRITICAL*)  | Yes    |       |
| Is there a potential difference in the wildfire vs structure response capability? (Explain in comments)   | No     |       |

Tax Year: 2024

Scale: 1:12944.99 Basemap: Imagery Hybrid



## Summary

### Primary Information

|  |   |
|--|---|
| Property Category: RP  | Subcategory: Non-Qualified Ag                               |
| Geocode: 04-2201-20-1-01-15-0000   | Assessment Code: 0004160425                                 |
| <b>Primary Owner:</b><br>BOONE THOMAS H TRUSTEE<br>MAIL TO: JASON HANDY<br>BUTTE, MT 59701-3021<br>Note: See Owners section for all owners | <b>Property Address:</b>                                    |
| Certificate of Survey: 5850  | Legal Description: S20, T13 N, R18 W, C.O.S. 5850, PARCEL 3 |
| Last Modified: 9/28/2024 17:21:7 PM  |   |

### General Property Information

|  |  |
|--|--|
| Neighborhood: 204.006.C                                      | Property Type: VAC_R - Vacant Land - Rural |
| Living Units: 0  | Levy District: 04-6590-14-8                |
| Zoning:  | Ownership: 100                             |
| LinkedProperty: No linked properties exist for this property |  |
| Exemptions: No exemptions exist for this property            |  |
| Condo Ownership:   | Limited: 0                                 |
| General: 0   |  |

### Property Factors

|                 |                        |
|-----------------|------------------------|
| Topography: n/a | Fronting: n/a          |
| Utilities: n/a  | Parking Type: n/a      |
| Access: n/a     | Parking Quantity: n/a  |
| Location: n/a   | Parking Proximity: n/a |



# Cadastral Property Report

Tax Year: 2024

## Land Summary

| Land Type:        | Acres: | Value: |
|-------------------|--------|--------|
| Grazing           | 0      | 0      |
| Fallow            | 0      | 0      |
| Irrigated         | 0      | 0      |
| Continuous Crop   |        |        |
| Wild Hay          | 0      | 0      |
| Farmsite          | 0      | 0      |
| ROW               | 0      | 0      |
| NonQual Land      | 47.38  | 2610   |
| Total Ag Land     | 47.38  | 2610   |
| Total Forest Land | 0      | 0      |
| Total Market Land | 0      | 0      |

## Deed Information

| Deed Date  | Book | Page | Recorded Date | Document Number | Document Type                  |
|------------|------|------|---------------|-----------------|--------------------------------|
| 7/27/2023  | 1090 | 1280 | 7/27/2023     | 202308387       | Notice of Purchaser's Interest |
| 10/19/2022 | 1084 | 678  | 12/15/2022    |                 | Contract for Deed              |

## Owners

### Party #1

|                      |   |
|----------------------|---|
| Default Information: | BOONE THOMAS H TRUSTEE<br>MAIL TO: JASON HANDY BUTTE, MT 59701-3021 |
| Ownership %:         | 100   |
| Primary Owner:       | Yes   |
| Interest Type:       | Conversion  |
| Last Modified:       | 8/3/2023 15:52:48 PM  |

### Party #2

|                      |  |
|----------------------|--|
| Default Information: | COX RANDY J TRUSTEE<br>MAIL TO: JASON HANDY BUTTE, MT 59701-3021 |
| Ownership %:         | 100  |
| Primary Owner:       | Yes  |
| Interest Type:       | Conversion   |
| Last Modified:       | 8/3/2023 15:52:48 PM   |

Tax Year: 2024

## Party #3

|                      |  |
|----------------------|--|
| Default Information: | GROUP OF FOUR LLC PROFIT SHARING PLAN<br>MAIL TO: JASON HANDY BUTTE, MT 59701-3021 |
| Ownership %:         | 100  |
| Primary Owner:       | Yes  |
| Interest Type:       | Conversion   |
| Last Modified:       | 8/3/2023 15:52:48 PM   |

## Party #4

|                      |  |
|----------------------|--|
| Default Information: | HANDY JASON<br>MAIL TO: JASON HANDY BUTTE, MT 59701-3021 |
| Ownership %:         | 100  |
| Primary Owner:       | Yes  |
| Interest Type:       | Conversion   |
| Last Modified:       | 8/3/2023 15:52:48 PM                                     |

## Party #5

|                      |   |
|----------------------|---|
| Default Information: | HANDY TRICIA<br>MAIL TO: JASON HANDY BUTTE, MT 59701-3021 |
| Ownership %:         | 100   |
| Primary Owner:       | Yes   |
| Interest Type:       | Conversion  |
| Last Modified:       | 8/3/2023 15:52:48 PM                                      |

## Appraisals

### Appraisal History

| Tax Year | Land Value | Building Value | Total Value | Method |
|----------|------------|----------------|-------------|--------|
| 2024     | 2610       | 0              | 2610        | COST   |
| 2023     | 2610       | 0              | 2610        | COST   |
| 2022     | 2622       | 0              | 2622        | COST   |

## Market Land

No market land exists for this parcel



# Cadastral Property Report

Tax Year: 2024

## Dwellings

No dwellings exist for this parcel

## Other Buildings

No other buildings exist for this parcel

## Commercial

No commercial buildings exist for this parcel

## Ag/Forest Land

### Ag/Forest Land Item #1

Acre Type: NQ - Non Qualified Ag Land  
Class Code: 1701

Irrigation Type: n/a  
Timber Zone: n/a

### Productivity

Quantity: n/a  
Units: Non Qual

Commodity: n/a

### Valuation

Acres: 47.38  
Value: 2610

Per Acre Value: 55.08

## Easements

No easements exist for this parcel

## Disclaimer



# Cadastral Property Report

---

Tax Year: 2024

The Montana State Library (MSL) provides this product/service for informational purposes only. MSL did not produce it for, nor is it suitable for legal, engineering, or surveying purposes. Data from disparate sources may not be in vertical alignment. Consumers of this information should review or consult the primary data and information sources to ascertain the viability of the information for their purposes. The MSL provides these data in good faith and in no event, shall be liable for any incorrect results or analysis, any lost profits and special, indirect or consequential damages to any party, arising out of or in connection with the use or the inability to use the data or the services provided. The MSL makes these data and services available as a convenience to the public, and for no other purpose. The MSL reserves the right to change or revise published data and/or services at any time.



# MISSOULA RURAL FIRE DISTRICT

Date: November 13, 2024

To: Christopher Guttenberg

Re: Annexation Request for 13398 Highway 200 E., Bonner Mt 59823

Dear Christopher,

I am pleased to inform you that the Missoula Rural Fire District (MRFD) Board of Trustees formally approved your request for annexation into the Fire District on November 12, 2024.

The annexation request will now be forwarded to the Missoula Board of County Commissioners for their final approval. It may take up to thirty days for Missoula County to complete their portion of the process. MRFD will provide fire and emergency services coverage for your property while the formal annexation process is being completed.

Welcome to the Missoula Rural Fire District. Please do not hesitate to contact the MRFD Deputy Fire Marshall's office at (406) 239-4844 or [pgiardino@mrfdfire.org](mailto:pgiardino@mrfdfire.org) if you have any questions.

Best regards,

Paul Finlay, Fire Chief  
Missoula Rural Fire District



# MISSOULA RURAL FIRE DISTRICT

Date: November 13

To: Jason Handy  
Tricia Handy  
Thomas H. Boone -- Trustee  
Group of Four, LLC Profit Sharing Plan

Re: Annexation Request for 5562 Handy Lane, Missoula, MT 59802

Dear Jason,

I am pleased to inform you that the Missoula Rural Fire District (MRFD) Board of Trustees formally approved your request for annexation into the Fire District on November 12, 2024

The annexation request will now be forwarded to the Missoula Board of County Commissioners for their final approval. It may take up to thirty days for Missoula County to complete their portion of the process. MRFD will provide fire and emergency services coverage for your property while the formal annexation process is being completed.

Welcome to the Missoula Rural Fire District. Please do not hesitate to contact the MRFD Deputy Fire Marshall's office at (406) 239-4844 or [pgiardino@mrfdfire.org](mailto:pgiardino@mrfdfire.org) if you have any questions.

Best regards,



Paul Finlay, Fire Chief  
Missoula Rural Fire District

Missoula Rural Fire District  
2521 South Avenue West  
Missoula, Montana 59804

Board of Trustees

**Resolution # 2024-9**  
**Donate Surplus Equipment**


The Missoula Rural Fire District Board of Trustees met in Regular Session on Tuesday, November 12, 2024.

Motion was made to approve the donation of the following surplus equipment:

- 30 - 1.75" Structure Hose 50' sections
- 30 - 1.5" Wildland Hose 100' sections
- 40 - 1" Wildland Hose 100' sections

Motion was seconded after discussion on the matter before the Board and the vote was passed.

  
\_\_\_\_\_ Ben Murphy, Chairman

  
\_\_\_\_\_ Dick Mangan, Secretary

  
\_\_\_\_\_ Paul Finlay, Fire Chief

Cc: BOT Minutes  
rhw

## GENERAL RELEASE OF LIABILITY FOR DONATION OF EQUIPMENT

This General Release of Liability for Donation of Equipment ("the Agreement") is hereby made and entered into effective on the date last signed by and between Missoula Rural Fire District, a Montana statutory rural fire district, 2521 South Avenue West, Missoula, Montana 59804 ("the District") and Seeley Lake Fire Department, 200 Firehouse Dr., Seeley Lake, MT 59868 ("the Recipient").

The District hereby agrees to donate, and the Recipient hereby agrees to accept AS IS and WITHOUT WARRANTY OF ANY KIND, the following equipment ("the Equipment"):

| Type of Equipment    | Make/Model         | Serial Number |
|----------------------|--------------------|---------------|
| 1.75" Structure Hose | (30) 50' sections  |               |
| 1.5" Wildland Hose   | (30) 100' sections |               |
| 1" Wildland Hose     | (40) 100' sections |               |

The Recipient acknowledges that the District is not and does not claim to be a dealer or merchant of the Equipment or of any equipment of any kind. The Recipient further acknowledges that in making its decision to accept, possess, and utilize the Equipment, it is not relying on any representations or warranties made by the District. The Recipient is accepting, possessing, and utilizing the Equipment WITHOUT ANY WARRANTIES, EXPRESSED OR IMPLIED, including WITHOUT ANY WARRANTY OF MERCHANTABILITY OR ANY WARRANTY OF FITNESS FOR A PARTICULAR PURPOSE.

The Recipient agrees that it shall be solely responsible in complying with all OSHA standards and requirements, NFPA standards, medical standards, and any other standards that may exist and are applicable to use of the Equipment. The Recipient further acknowledges and agrees that the District makes no warranties or representations as to whether the Equipment now meets, or in the future may meet, any such applicable standards.

The Recipient understands that once the Equipment is in the possession of the Recipient, the District no longer has any control over its condition, maintenance, function, operability, or use, and thus, the Recipient shall thenceforth assume all responsibility and liability for the Equipment, including its condition, maintenance, function, operability, and use, as well as for hiring or training persons for the same.

The Recipient hereby irrevocably and unconditionally waives, releases, acquits, and forever discharges the District and its trustees, administration, and employees from any and all claims, liabilities, promises, actions, damages, and the like, known or unknown, that the Recipient has or ever might have against the District, its trustees, administration, and employees, which arise or may arise out of or relate to the Recipient's acceptance, possession, and utilization of the Equipment.

The Recipient agrees to indemnify and hold the District harmless from any and all claims, liabilities, promises, actions, damages, and the like, known or unknown, from its acceptance,

possession, and utilization of the Equipment. In addition, the Recipient shall not bring any legal action against the District for any claim, liability, promise, action, or damages waived and released under this Agreement. Should the Recipient bring any type of administrative or legal action arising out of or related to any claim, liability, promise, action, or damages waived and released under this Agreement, the Recipient shall pay the reasonable legal fees and costs that the District incurs in defending against such claim, liability, promise, action, or damages.

The Recipient recognizes that there are certain inherent risks associated with use of the Equipment. The Recipient hereby acknowledges and accepts all liabilities and assumptions of risk regarding the acceptance, possession, and utilization of the Equipment and as to the Equipment's conformity with current OSHA, NIOSH and NFPA standards.

The Recipient understands that it has the right to review this Agreement with its attorney prior to signing it. If the Recipient's duly authorized representatives sign the Agreement, they agree that they have done so after reviewing the Agreement with the Recipient's attorney or have waived the right and opportunity to do so.

Missoula Rural Fire District

By: [Signature] Paul Finlay, Chief

By: [Signature] Ben Murphy, Chairman of the Board

Attest By: [Signature] Dick Mangan, Secretary of the Board

Seeley Lake Fire Department  
200 Firehouse Dr., Seeley Lake, MT 59868

By: \_\_\_\_\_  
Recipient's Authorized Representative signature

By: \_\_\_\_\_  
Title: \_\_\_\_\_  
Recipient's Authorized Representative Name and Title

State of Montana

County of \_\_\_\_\_  
This instrument was signed before me on \_\_\_\_\_

by \_\_\_\_\_  
Print name of signer(s)

\_\_\_\_\_  
Notary Signature

Affix seal/stamp as close to signature as possible.